

## DS-225 MANUAL SEALER

Part No. 306220

### GENERAL SAFETY CONSIDERATIONS

- EYE INJURY HAZARD.**  
Failure to wear safety glasses with side shields can result in severe eye injury or blindness. Always wear safety glasses with side shields which conform to ANSI Standard Z87.1 or EN 166.
- FALL HAZARD.**  
Maintaining improper footing and/or balance when operating the tool can cause you to fall. Do not use the tool when you are in an awkward position.
- CUT HAZARD.**  
Handling strap or sharp parts could result in cut hands or fingers. Wear protective gloves.
- TRAINING.**  
This tool must not be used by persons not properly trained in its use. Be certain that you receive proper training from your employer. If you have any questions contact your Acme Representative.
- TOOL CARE.**  
Take good care of the tool. Inspect and clean it daily, lubricate it weekly. Replace any worn or broken parts.
- WORK AREA.**  
Keep work areas uncluttered and well lighted.
- TENSIONING STRAP.**  
When tensioning strap use proper tensioner for specific strap sizes. Read the tensioner's operation and safety manual.

Several combinations of strap, seals and tools can be used with this sealer. Use the correct Acme products for your application. If you need help contact your Acme Representative.

### SAFETY PROCEDURES FOR TOOL OPERATION

- Before using this sealer, read all the instructions in this Operation, Parts and Safety Manual.
- Always lift and carry the tool by the tool handle knob. Lifting the tool at any other point may expose the hand to a "pinch point."
- Make sure the sealer jaws are placed directly on the seal.
- While sealing, position yourself to one side of the tensioned strap.
- This tool is a single crimp sealer that requires two or four sealing operations for each seal depending on the seal being used. A properly crimped seal will appear as shown in the illustrations below.

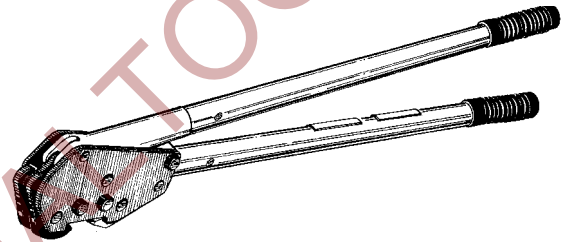
1036LG



If the crimped seal does not appear as shown, inspect the tool for worn and/or damaged parts. Replace tool parts as needed. Do not ship any loads secured with improperly crimped seals. Seal must be properly crimped.

### CUTTING TENSIONED STRAP

**FLYING STRAP HAZARD.** Using claw hammers, crowbars, chisels, axes or similar tools will cause tensioned strap to fly apart with hazardous force. Use only cutters designed for cutting strap. Read the instructions in the cutters manual for proper procedure in cutting strap. Before using any Acme product read its operation and safety manual.



### SPECIFICATIONS

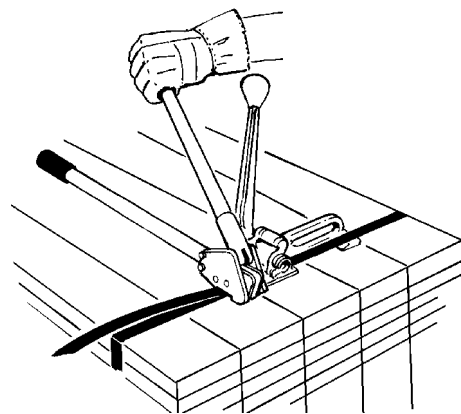
For use with 1-1/4" High Tensile steel strapping .025" to .035" thick.

This tool uses the following seal: 1036LG.

Number of crimping operations per seal: 4 crimps

### OPERATING INSTRUCTIONS

- Fully open the sealer handles and place the open jaws to one end of the seal.



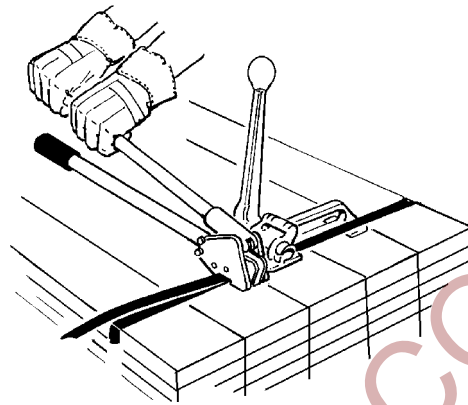
© Copyright 2008, Acme 512159 Rev. 11/2008

## OPERATING INSTRUCTIONS, Continued

2. Bring the sealer handles completely together to assure a proper crimp.
3. Remove the sealer. Place the sealer on the seal and apply remaining crimps (1 or 3) in appropriate positions by bringing the handles completely together. Remove the sealer when through.

**NOTE:** If the gauge of the strap being used will not allow it to be bent, cut the strap supply as close to the seal as possible using an approved strap cutter.

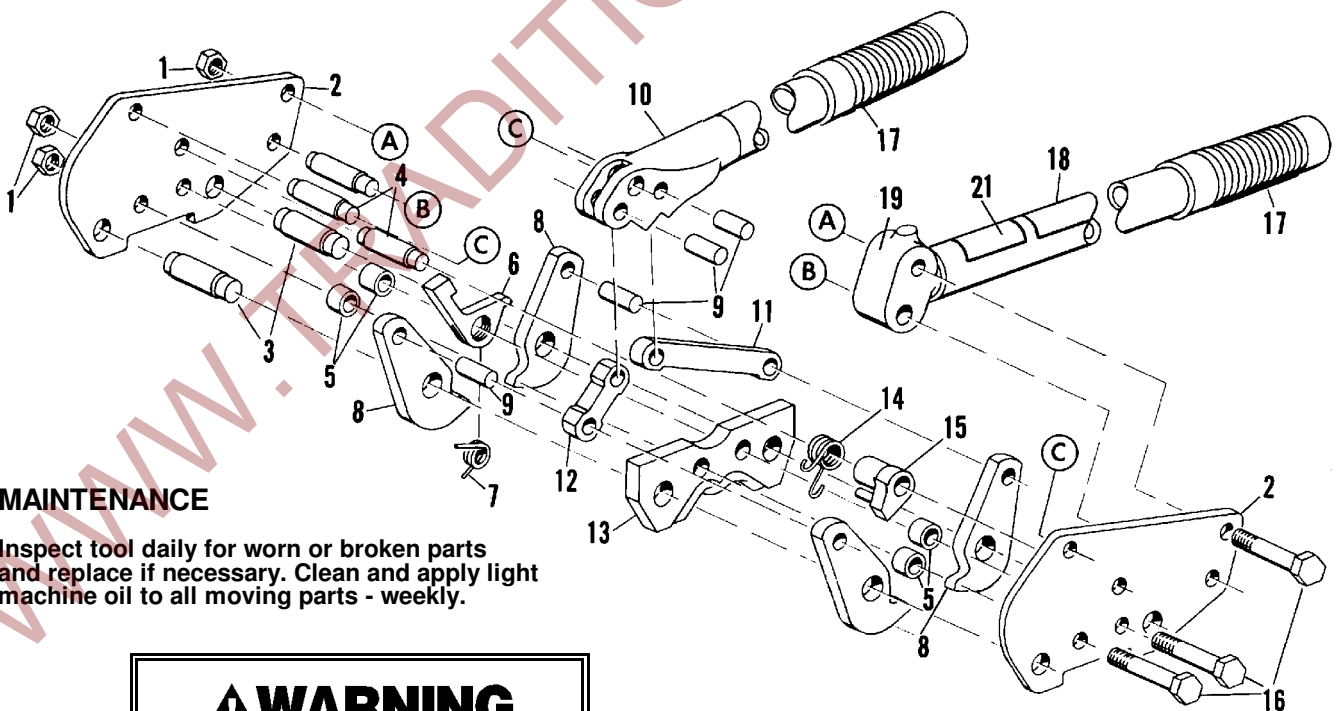
4. To avoid contact with the sharp end of the strap, retract the strap end back into the strap dispenser.



## PARTS LIST

KEY	QTY	PART#	DESCRIPTION	KEY	QTY	PART#	DESCRIPTION
1	3	003911	Grip lock nut	11	1	020384	Large toggle link
2	2	020386	Side plate	12	1	020393	Short toggle link
3	2	020387	Jaw pin	13	1	020383	Crimper
4	3	003974	Fulcrum pin	14	1	020389	Holding pawl spring
5	4	020388	Tie bolt spacer	15	1	020390	Holding pawl
6	1	020391	Locking pawl	16	3	003972	Tie bolt
7	1	020392	Locking pawl spring	17	2	020378	Grip
8	4	020385	Jaw	18	1	584-1188	Nameplate
9	4	004049	Link pin	19	1	422004	Lower handle arm assembly
10	1	422002	Upper handle arm assembly	20	1	003132	Caution plate

When ordering parts, please show tool model, part number and name. All recommended spare parts are underlined and should be stocked.



## MAINTENANCE

Inspect tool daily for worn or broken parts and replace if necessary. Clean and apply light machine oil to all moving parts - weekly.

### **WARNING**

Inspect all parts daily and replace them if they are worn or broken. Failure to do this can affect a product's operation and could result in serious personal injury.