

DTF-56 MANUAL TENSIONER

Part No. 306115

GENERAL SAFETY CONSIDERATIONS

1. **EYE INJURY HAZARD.**
Failure to wear safety glasses with side shields can result in severe eye injury or blindness. Always wear safety glasses with side shields which conform to ANSI Standard Z87.1.

2. **STRAP BREAKAGE HAZARD.**
Improper operation of the tool or sharp corners on the load can result in strap breakage during tensioning, which could result in the following:

- A sudden loss of balance causing you to fall.
- Both tool and strap flying violently towards your face.

Failure to place the strap properly around the load or on an unstable or shifted load could result in a sudden loss of strap tension during tensioning. This could result in a sudden loss of balance causing you to fall.

Read the tools operating instructions. If the load corners are sharp use edge protectors. Place the strap correctly around a properly positioned load.

Positioning yourself in-line with the strap, during tensioning and sealing, can result in severe personal injury from flying strap or tool. When tensioning or sealing, position yourself to one side of the strap and keep all bystanders away.

3. **FALL HAZARD.**
Maintaining improper footing and/or balance when operating the tool can cause you to fall. Do not use the tool when you are in an awkward position.

4. **CUT HAZARD.**
Handling strap or sharp parts could result in cut hands or fingers. Wear protective gloves.

5. **TRAINING.**
This tool must not be used by persons not properly trained in their use. Be certain that you receive proper training from your employer. If you have any questions contact your Acme Representative.

6. **TOOL CARE.**
Take good care of the tool. Inspect and clean it daily, lubricate it weekly and adjust when necessary. Replace any worn or broken parts.

7. **WORK AREA.**
Keep work areas uncluttered and well lighted.

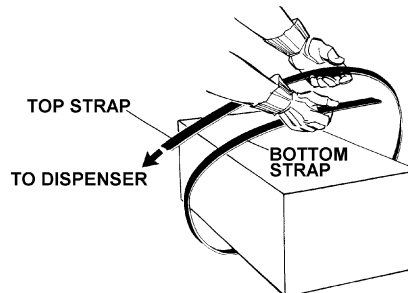
STRAP SPECIFICATIONS

Width: 3/8" to 3/4" Steel
Gauge: Up to .025" Thick

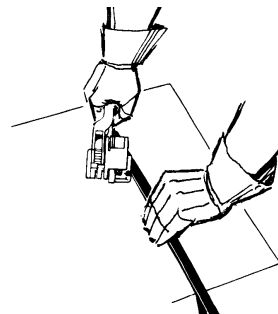


OPERATING INSTRUCTIONS

1. Encircle the package with strap as illustrated. Take up the slack, keeping the strap squarely in line.

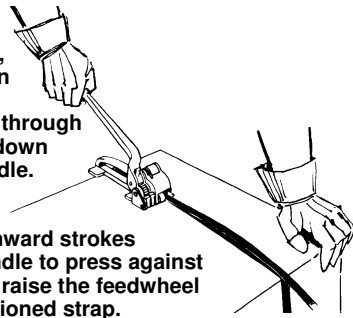


2. Hold the hand-tensioned strap in position with the left hand, grasp the tool in the right hand and squeeze the handle to the base to lift the feedwheel. Position the rear foot over the strap and slide the front foot under the overlapping ends, approximately 1" (25mm) ahead of the lower strap end. Make sure both straps have been fully inserted into the tool. The inner edges of the strap must butt up against the inner edge of the tool.



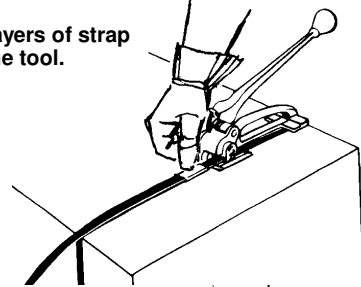
OPERATING INSTRUCTIONS, Continued

3. Release grip on tool to engage strapping, being sure strap is in alignment with tool. Tension is obtained through continuous up and down motion with the handle.

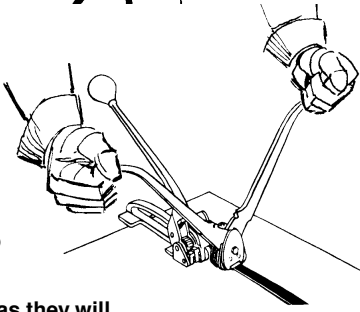


WARNING: On downward strokes do not allow the handle to press against the base as this will raise the feedwheel and release the tensioned strap.

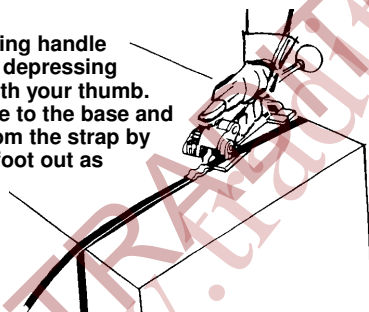
4. Snap seal on both layers of strap directly in front of the tool.



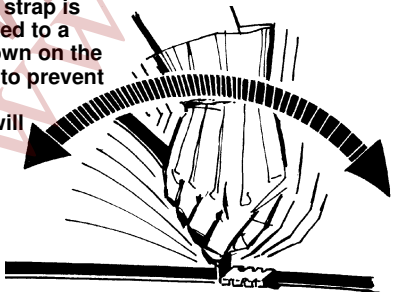
5. Hold the sealing tool at a right angle to the strap, resting it squarely over the seal. Seal the tensioned strap by bringing the sealer handles together as far as they will go.



6. Return the tensioning handle to rest on the tool, depressing the handle pawl with your thumb. Squeeze the handle to the base and remove the tool from the strap by swinging the rear foot out as illustrated.



7. Carefully bend the excess strap sharply back on the seal. If the excess strap is loose (not connected to a dispenser) hold down on the loose end of strap to prevent personal injury. Additional bends will result in a clean strap break off.

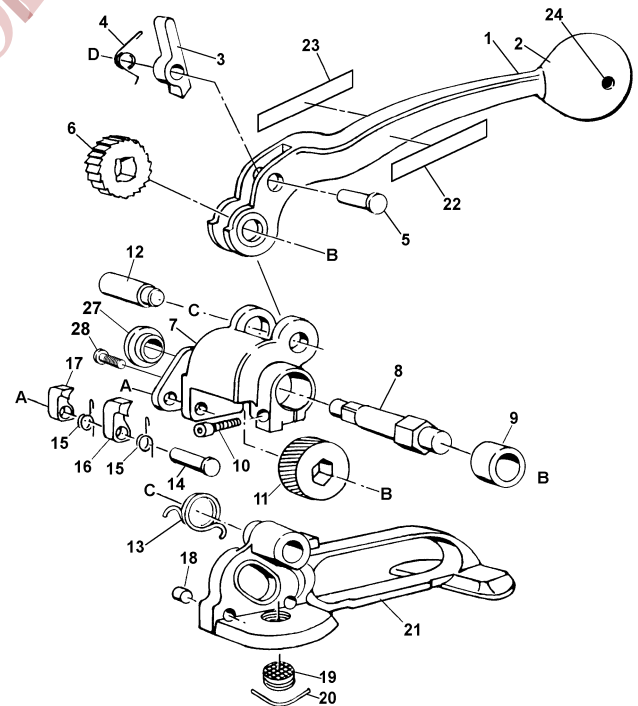


PARTS LIST

KEY	QTY.	PART#	DESCRIPTION
1	1	306399	Handle assembly
2	1	306231	Knob & roll pin
3	1	003492	Handle pawl
4	1	<u>003489</u>	<u>Handle pawl spring</u>
5	1	003494	Handle pawl pin
6	1	003488	Ratchet gear
7	1	306118	Feedwheel support
8	1	003487	Feedwheel shaft
9	1	003478	Bearing
10	1	004502	SHCS, #10-32 x 5/8
11	1	003482	Feedwheel
12	1	003491	Feedwheel support pin
13	1	003479	<u>Feedwheel support spring</u>
14	1	003486	Retaining pawl pin
15	2	<u>003483</u>	<u>Retaining pawl spring</u>
16	1	003484	Long retaining pawl
17	1	003485	Short retaining pawl
18	2	001656	Strap guide pin
19	1	<u>273748</u>	<u>Clutch plug</u>
20	1	001644	Lock wire
21	1	306119	Base
22	1	306236	Nameplate
23	1	003133	Danger sign
24	1	010057	Roll pin
27	1	424250	Bushing
28*	1	424251	BHCS, 1/4-28 x 1/4

When ordering parts, please show tool model, part number and name. All recommended spare parts are underlined and should be stocked. Standard hardware parts may be obtained from local hardware suppliers.

* Apply one drop of Loctite #271 (Red) or equivalent.



WARNING

Inspect all parts daily and replace them if they are worn or broken. Failure to do this can affect a product's operation and could result in serious personal injury.