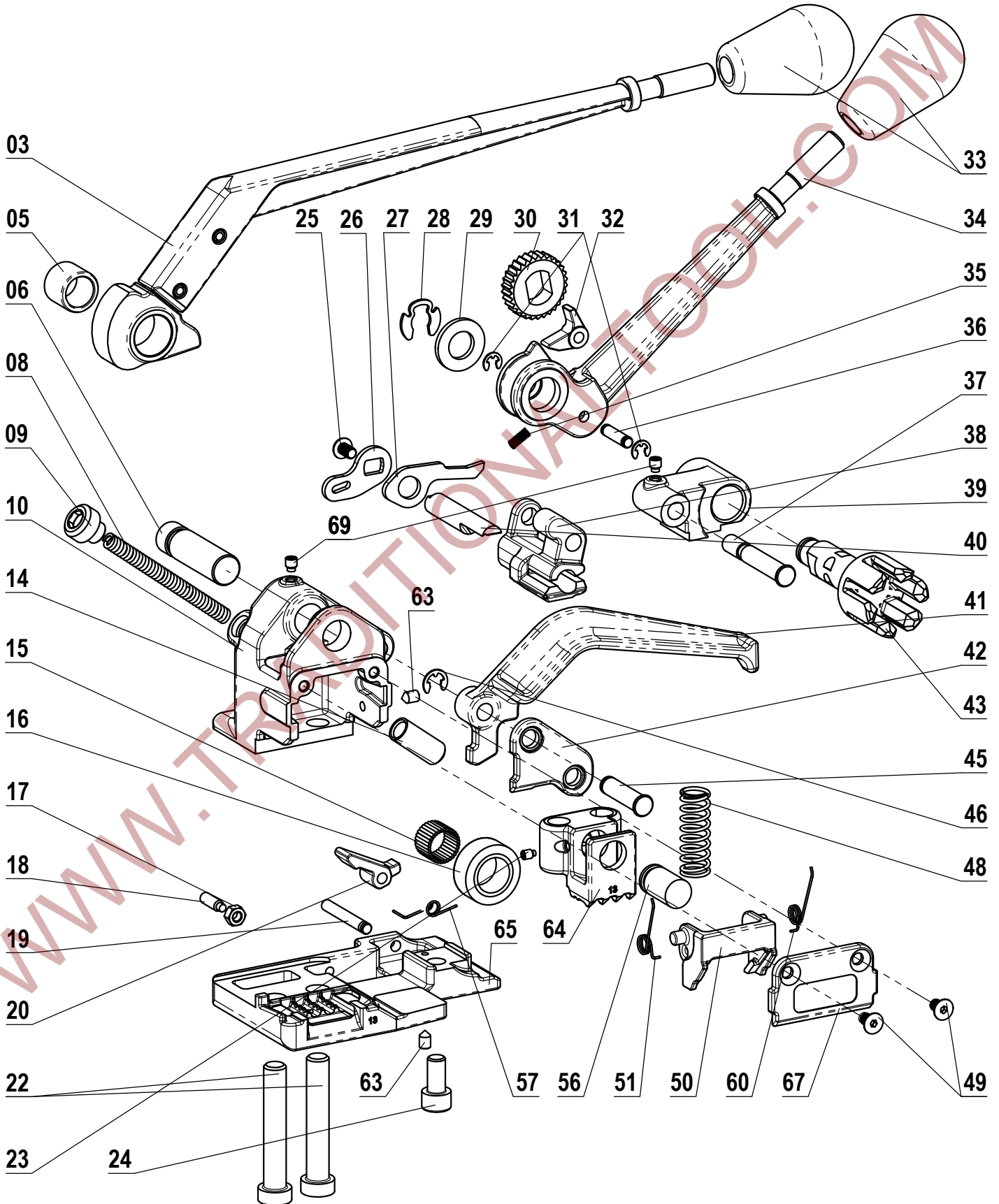


MUL-341

Combination Tool for 1/2"
Polypropylene (PP) Strapping



MUL-341 PART LIST

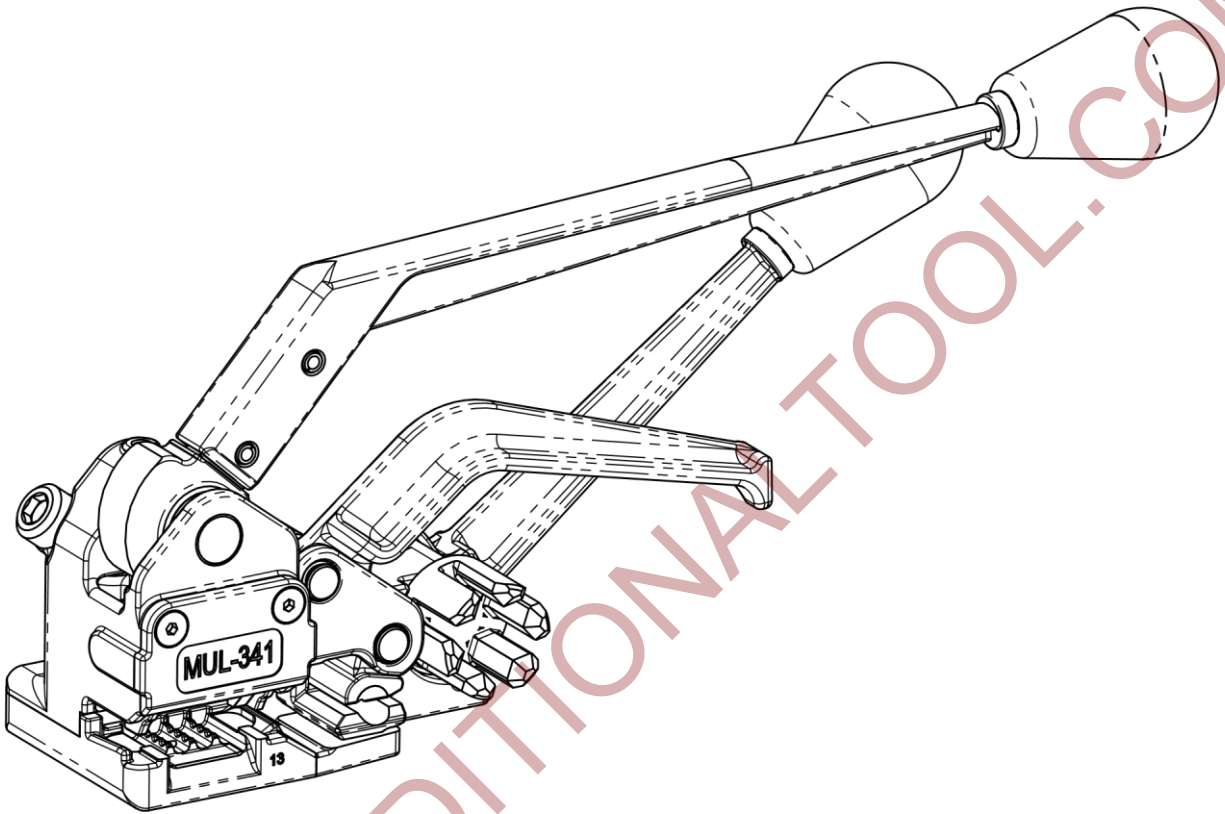
Combination Tool for 1/2" Polypropylene (PP) Strapping

No	KEYNo	DESCRIPTION	Qty	No	KEYNo	DESCRIPTION	Qty
03	341-03	SEALING HANDLE	1	34	341-34	TENSION HANDLE	1
05	341-05	ROLLER BEARING	1	35	341-35	TENSION PAWL SPRING	1
06	341-06	PIN	1	36	341-36	PIN	1
08	341-08	MAIN SPRING	1	37	341-37	PIN	1
09	341-09	SCREW	1	38	341-38	GRIPPER HEAD	1
10	341-10	FRAME	1	39	341-39	TENSION HOUSING	1
14	341-14	BUSHING	1	40	341-40	CUTTER	1
15	341-15	NEEDLE ROLLER	31	41	341-41	HANDLE	1
16	341-16	ROLLER	1	42	341-42	COVER	1
17	341-17	NUT M5	1	43	341-43	WINDLASS	1
18	341-18	SET SCREW M5x16	1	45	341-45	PIN	1
19	341-19	PIN	1	46	341-46	E-RING 6	1
20	341-20	RETAINING PAWL	1	48	341-48	PUNCH SPRING	1
22	341-22	SCREW	2	49	341-49	SCREW M5x8	2
23	341-23	SET SCREW M4x6	1	50	341-50	LOCK GUIDE	1
24	341-24	CAP SCREW M8x16	1	51	341-51	LOCK GUIDE SPRING RIGHT	1
25	341-25	CAP SCREW M5x8	1	56	341-56	PIN	1
26	341-26	ARM	1	57	341-57	SPRING	1
27	341-27	RETURN ARM	1	60	341-60	LOCK GUIDE SPRING LEFT	1
28	341-28	KLIPRING 7/16"	1	63	341-63	SET SCREW M5x8	2
29	341-29	PLAIN WASHER 13	1	64	341-64	PUNCH HEAD	1
30	341-30	RATCHET WHEEL	1	65	341-65	BASE	1
31	341-31	E-RING 4	2	67	341-67	COVER	1
32	341-32	TENSION PAWL	1	69	341-69	SET SCREW M5x6	2
33	341-33	KNOB	2				1



MUL-341 Combination Tool for POLYPROPYLENE

Operation Manual



Strap Type	Polypropylene (PP)
Strap Width	1/2" (13 mm)
Strap Thickness	Up to 0.031" (0.8 mm)
Joint Type	Seal ST-340
Weight	6.6 lbs (3 kg)
Footprint	L: 4.75"; W: 3"

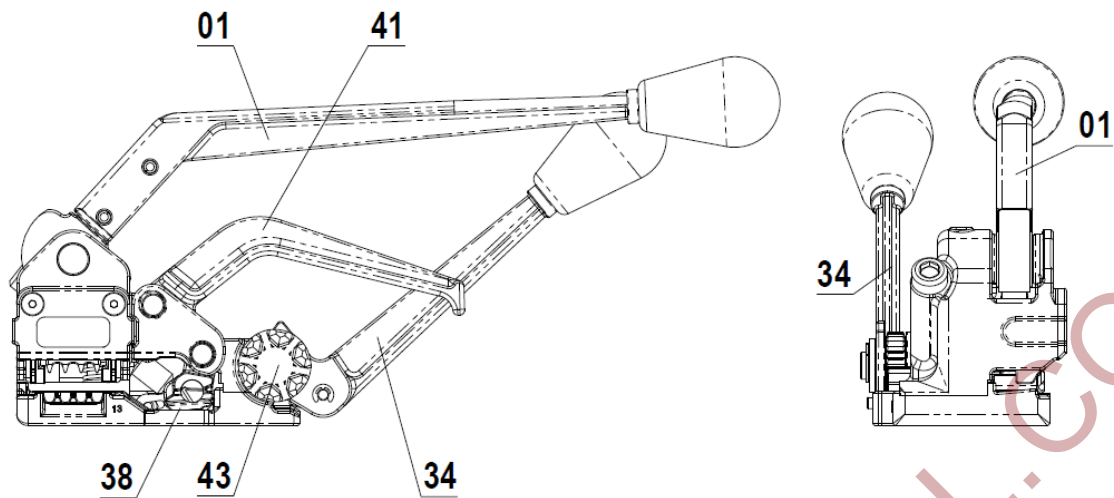


Fig. 1 – Starting Position

1. Load a Seal 102 as shown on Fig. 2. For MUL-341 use ST-340 open seals for 1/2" (12mm) strap.

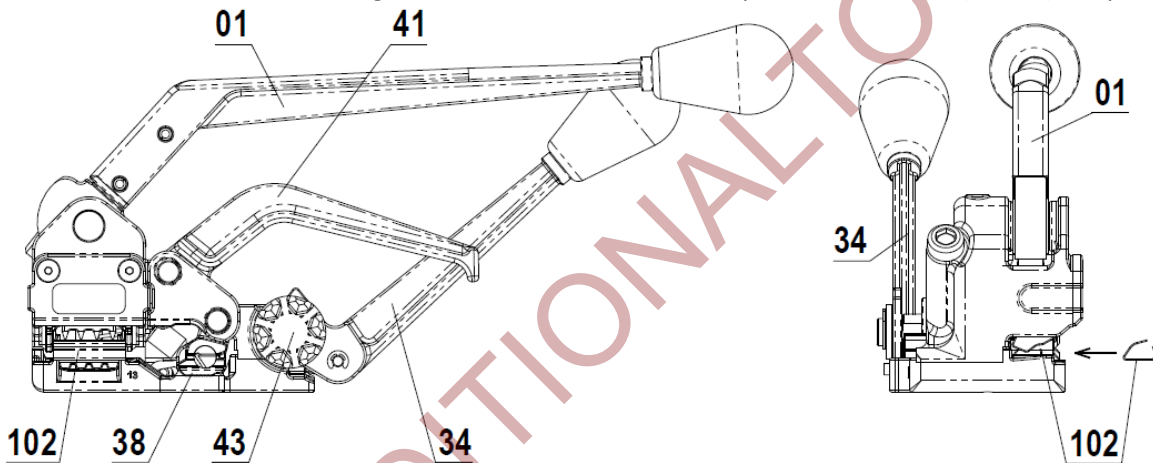


Fig. 2

2. Pull up on Handle 41 to raise Gripper Head 38. Load bottom strap 101 inside the seal 102, under Windlass 43 and under Gripper Head 38 and leave at least 1" of the strap extended out from the front of the tool as shown on Fig. 3.

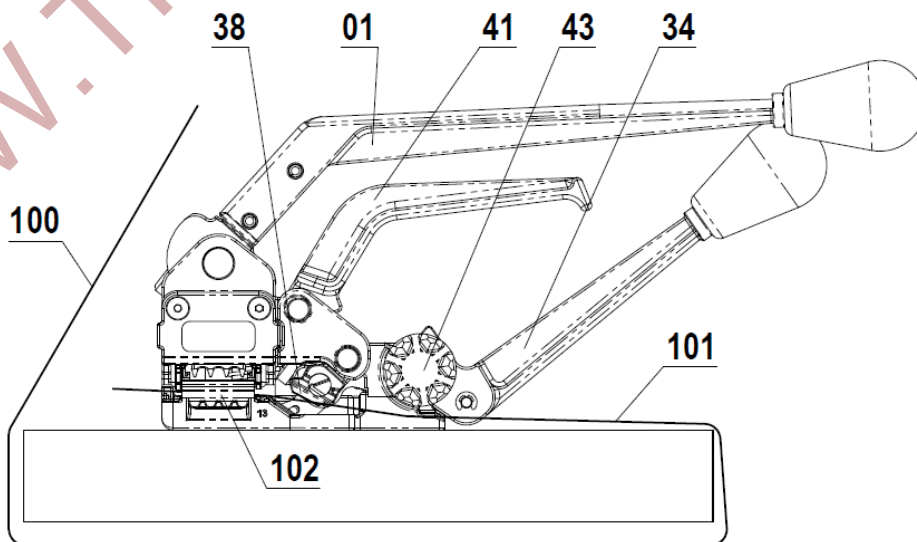


Fig. 3

3. Release **Handle 41** and load upper strap **100** inside the seal **102**, through the cutter and through **Windlass 43** as shown on Fig. 4.

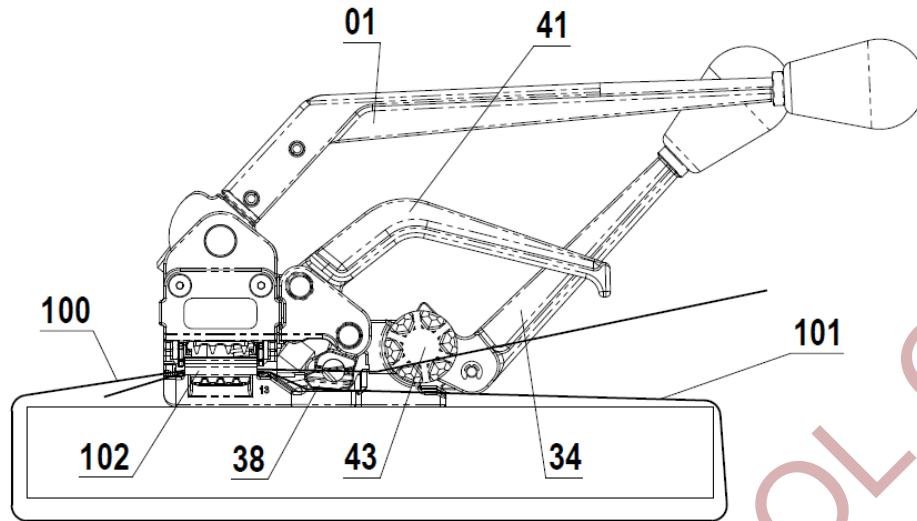


Fig. 4

4. Apply tension by ratcheting **Tension Handle 34** as shown on Fig. 5.

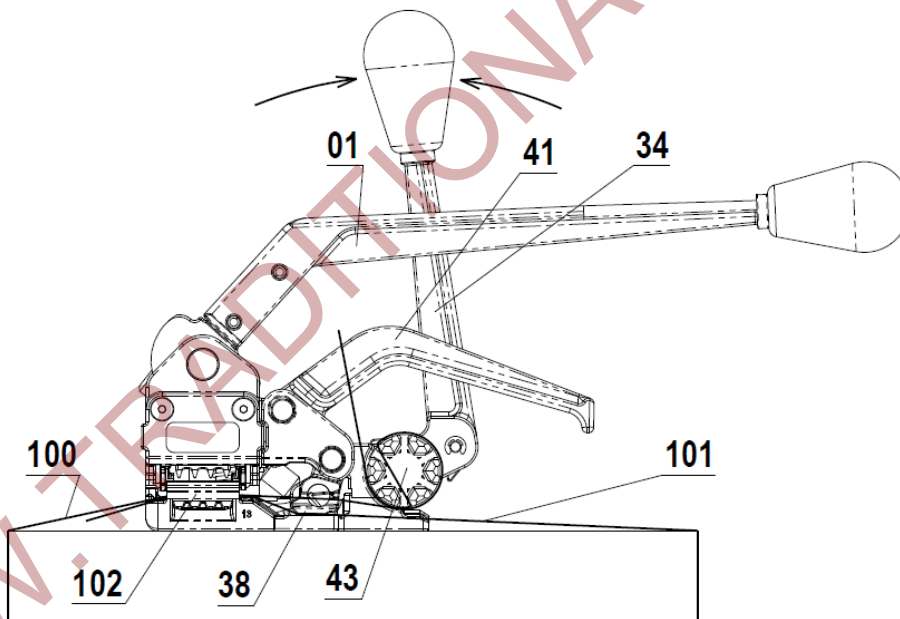


Fig. 5

5. Once satisfactory tension is achieved return **Tension Handle 34** back and push **Sealing Handle 01** forward as shown on Fig. 6 to close the seal.

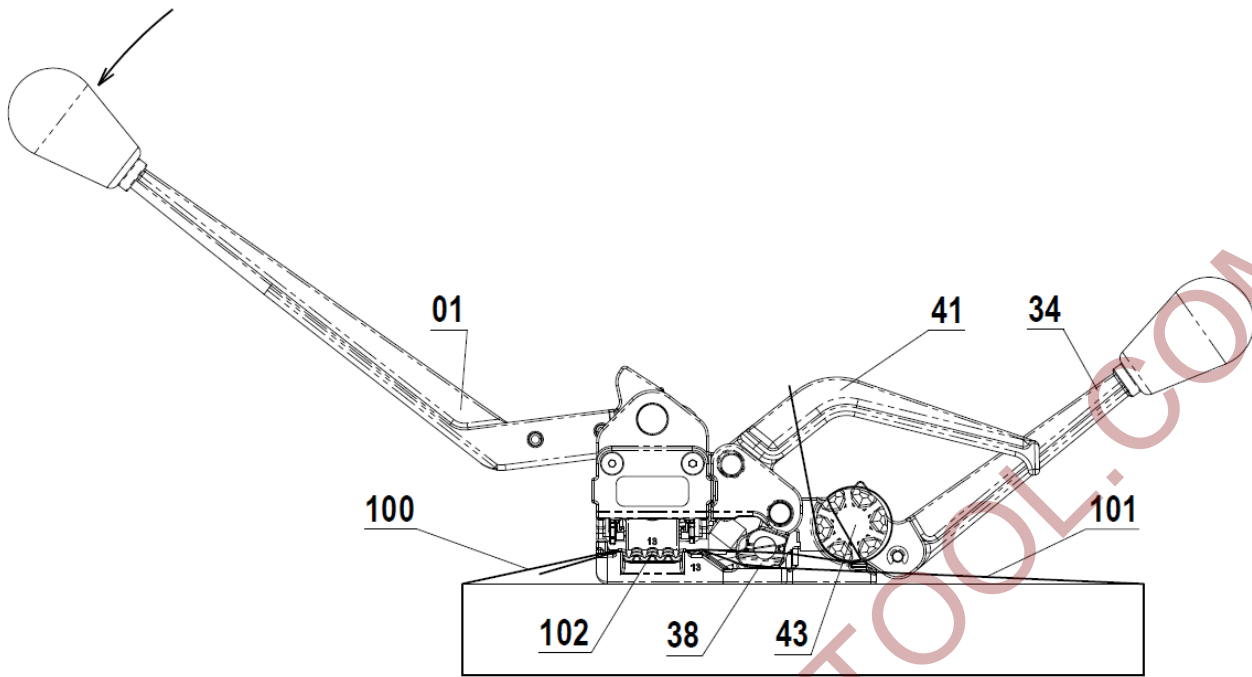


Fig. 6

6. Return **Sealing Handle 01** back and pull up **Handle 41** to cut the strap. The operation cycle is now complete.

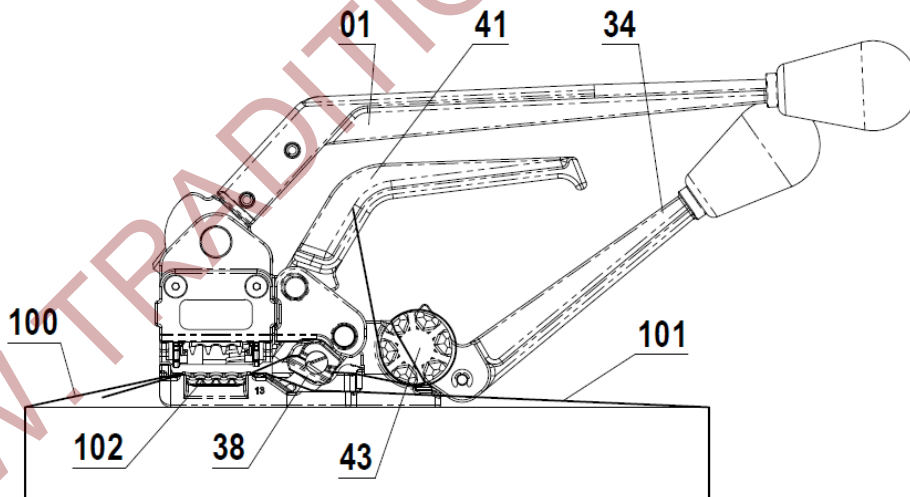


Fig. 7