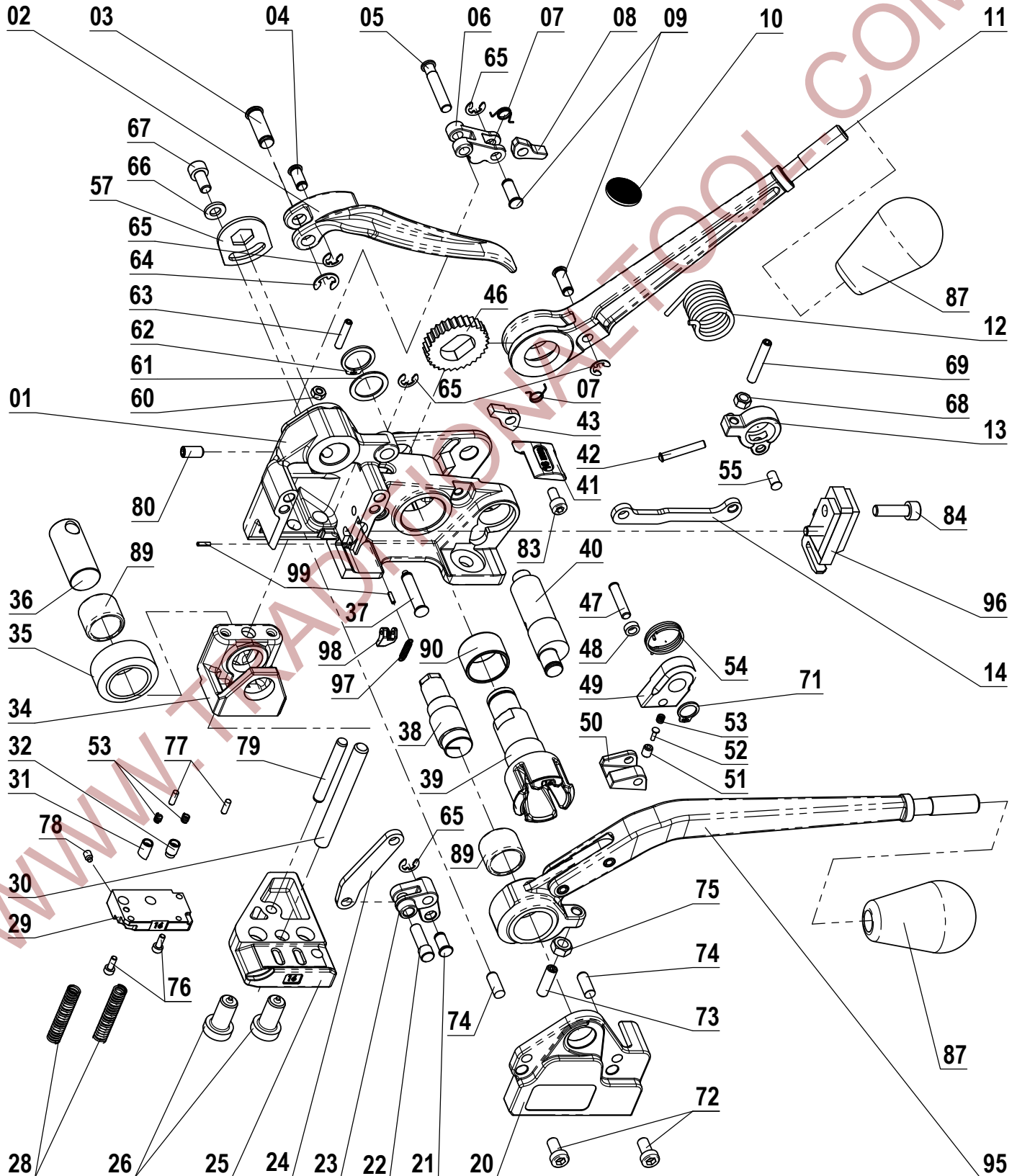


### MUL-350

Combination Tool  
for 5/8" PET Strapping



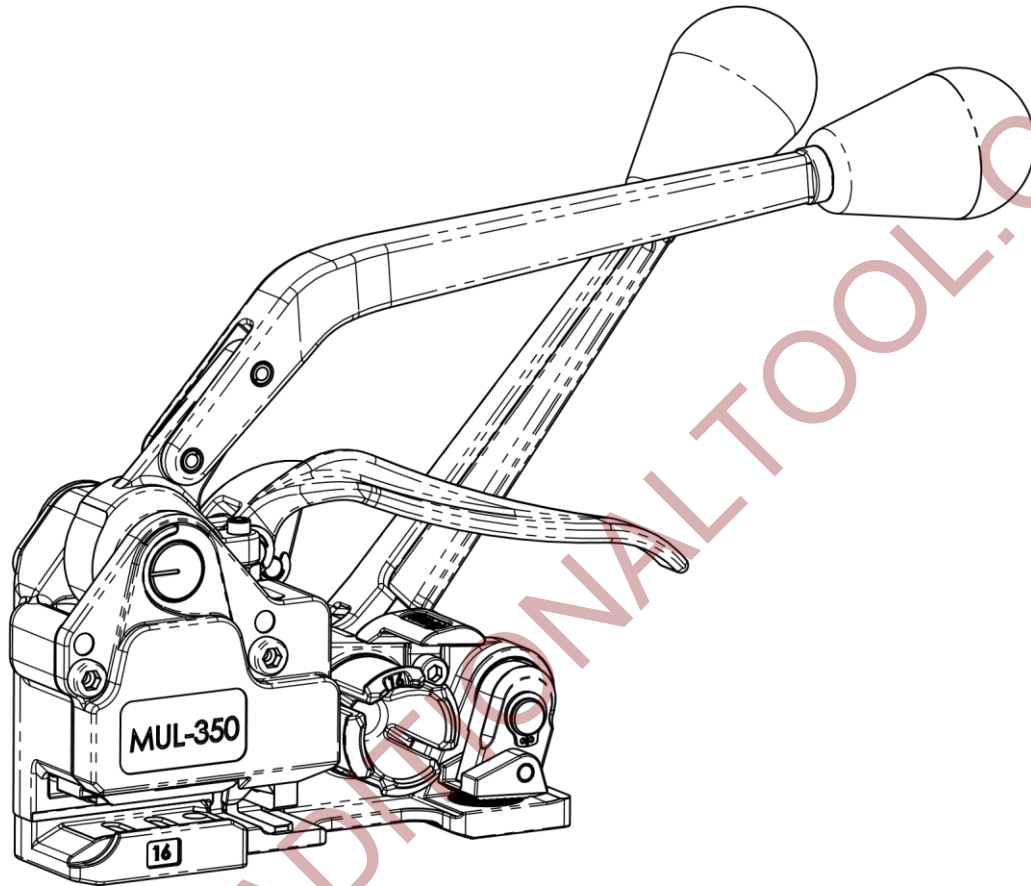
# MUL-350 Part list

## Combination Tool for 5/8" PET Strapping

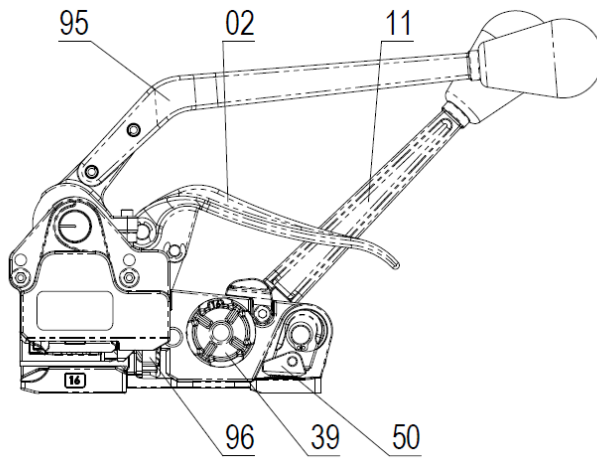
No	KEY No	DESCRIPTION	QTY.	No	KEY No	DESCRIPTION	QTY.
01	350-01	FRAME	1	49	350-49	GRIPPER BODY	1
02	350-02	HANDLE	1	50	350-50	GRIPPER FOOT	1
03	350-03	HANDLE PIN	1	51	350-51	GRIPPER FOOT SCREW	1
04	350-04	ARM PIN	1	52	350-52	GRIPPER FOOT PIN	1
05	350-05	PAWL HOUSING PIN	1	53	350-53	GRIPPER FOOT SPRING	3
06	350-06	PAWL HOUSING	1	54	350-54	GRIPPER SPRING	1
07	350-07	PAWL SPRING	2	55	350-55	PIN	1
08	350-08	PAWL	1	57	350-57	ADJUSTMENT PLATE	1
09	350-09	PAWL PIN	2	60	350-60	NUT M4	1
10	350-10	GRIPPER PAD	1	61	350-61	WASHER 16	1
11	350-11	TENSION HANDLE	1	62	350-62	RETAINING RING 5/8	1
12	350-12	LEVER SPRING	1	63	350-63	SET SCREW M4x20	1
13	350-13	LEVER	1	64	350-64	E-RING 7	1
14	350-14	ARM	1	65	350-65	E-RING 5	5
20	350-20	COVER	1	66	350-66	WASHER 6	1
21	350-21	CUTTER ARM PIN	1	67	350-67	SCREW M6x12	1
22	350-22	CUTTER PIN	1	68	350-68	NUT M5	1
23	350-23	CUTTER LEVER	1	69	350-69	SET SCREW M5x30	1
24	350-24	CUTTER ARM	1	71	350-71	RETAINING RING 12	1
25	350-25	BASE 16mm	1	72	350-72	SCREW M6x16	2
26	350-26	BASE SCREW	2	73	350-73	ADJUSTMENT SCREW M6x20	1
28	350-28	DIE HOLDER SPRING	2	74	350-74	DOWEL PIN 6x16	2
29	350-29	DIE PLATE 16mm	1	75	350-75	NUT M6	1
30	350-30	GUIDE PIN	1	76	350-76	SCREW M3x8	2
31	350-31	PAWL	1	77	350-77	DOWEL PIN 3x10	2
32	350-32	HOLDING CLAMP	1	78	350-78	SET SCREW M4x6 DOG POINT	1
34	350-34	DIE HOLDER	1	79	350-79	DOWEL PIN 6x45	1
35	350-35	CAM FOLLOWER	1	80	350-80	SET SCREW M6x12	1
36	350-36	DIE HOLDER AXLE	1	83	350-83	SCREW M5x10	1
37	350-37	CUTTER LEVER PIN	1	84	350-84	SCREW M6x20	1
38	350-38	ECCENTRIC AXLE	1	87	350-87	KNOB	2
39	350-39	WINDLASS 16 mm	1	89	350-89	BEARING	2
40	350-40	ECCENTRIC SHAFT	1	90	350-90	PLANE BEARING	1
41	350-41	STRAP GUIDE 16mm	1	95	350-95	SEALING HANDLE	1
42	350-42	LEVER PIN	1	96	350-96	CUTTER	1
43	350-43	TENSION PAWL	1	97	350-97	SPRING	1
46	350-46	RATCHET WHELL	1	98	350-98	GUIDE PAWL	1
47	350-47	GRIPPER FOOT SHAFT	1	99	350-99	SPRING PIN	2
48	350-48	GRIPPER FOOT BUSHING	1				

# MUL-350/MUL-351 Combination Tool for POLYESTER

## Operation Manual

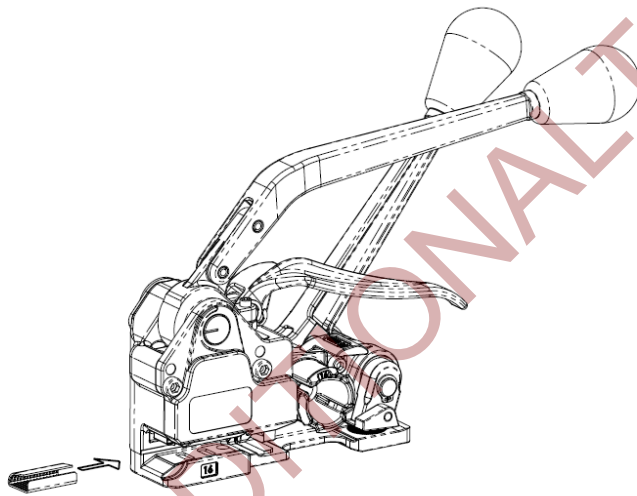


Strap Type	Polyester (PET)
Strap Width	MUL-350 5/8" (16 mm) MUL-351 1/2" (13 mm)
Strap Thickness	Up to 0.040" (1 mm)
Joint Type	Seal
Weight	8.3 lbs (3.8 kg)
Footprint	L: 5.75"; W: 2.85"



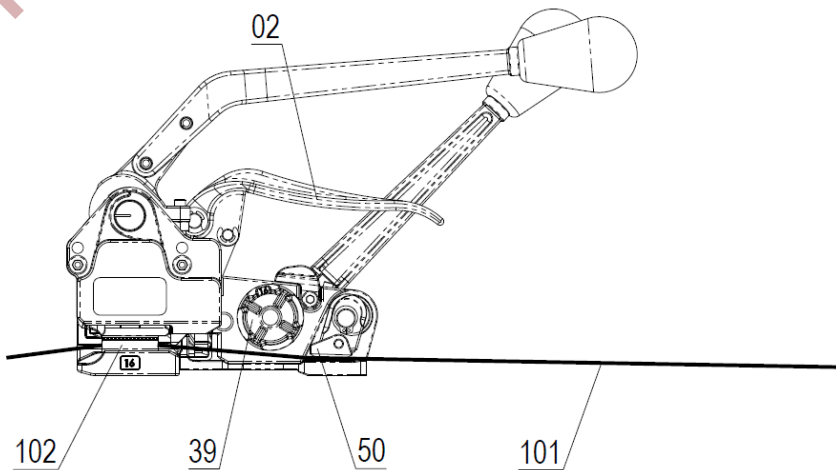
**Fig. 1 – Starting position**

1. Load a seal as shown on Fig. 2. For MUL-350 use open serrated seals for 5/8" (16mm) strap and for MUL-351 use open serrated seals for 1/2" (12mm) strap.



**Fig. 2**

2. Pull up on **Handle 02** to raise **Gripper Foot 50**. Load bottom strap **101** inside the seal **102**, under **Windlass 39** and under **Gripper Foot 50** as shown on Fig. 3.



**Fig. 3**

3. Release **Handle 02** and load upper strap **100** inside the seal **102**, through the cutter and through **Windlass 39** as shown on Fig. 4.

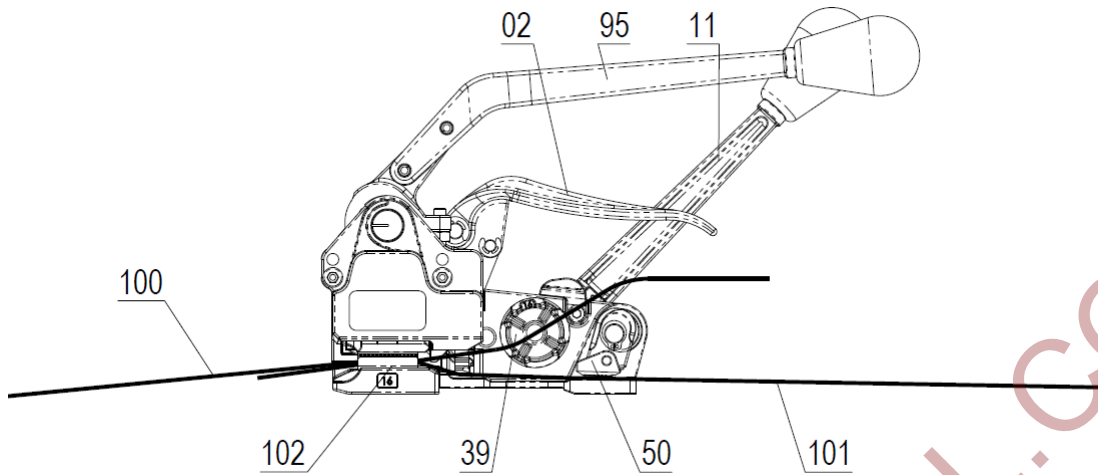


Fig. 4

4. Apply tension by ratcheting **Tension Handle 11** as shown on Fig. 5.

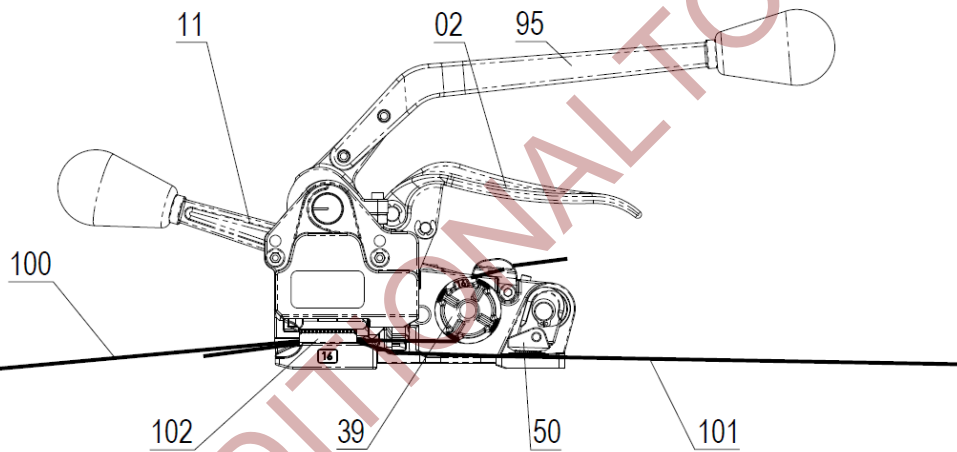


Fig. 5

5. Once satisfactory tension is achieved return **Tension Handle 11** back and push **Sealing Handle 95** forward (as shown on Fig. 6) to close the seal.

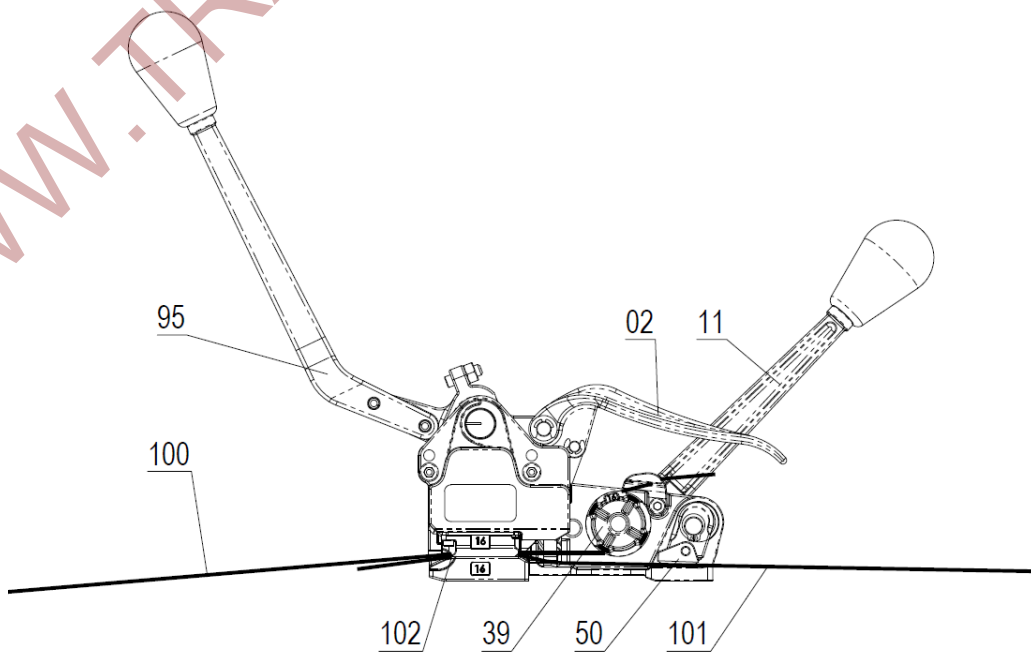


Fig. 6

6. Return **Sealing Handle 95** back and pull up **Handle 02** to cut the strap. The operation cycle is now complete.

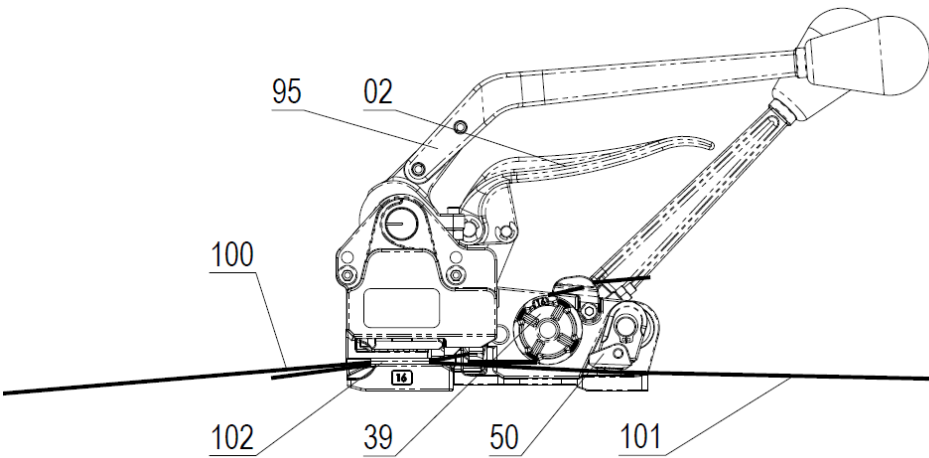


Fig. 7

WWW.TRADITIONALTOOL.COM

## Adjustment instructions for MUL-350/351

### 1. Adjustment for seal height.

Proper slot for a seal is achieved when the seal can be inserted in the slot with ease, but sits tightly in the slot. **NOTE:** if the seal is loose in the slot, the joint might not close properly.

- 1.1. Hold 350-63 SET SCREW 4x20 in place by using T-Key 2mm and loosen 350-60 NUT M4 using Wrench 7mm (Fig. 1a).

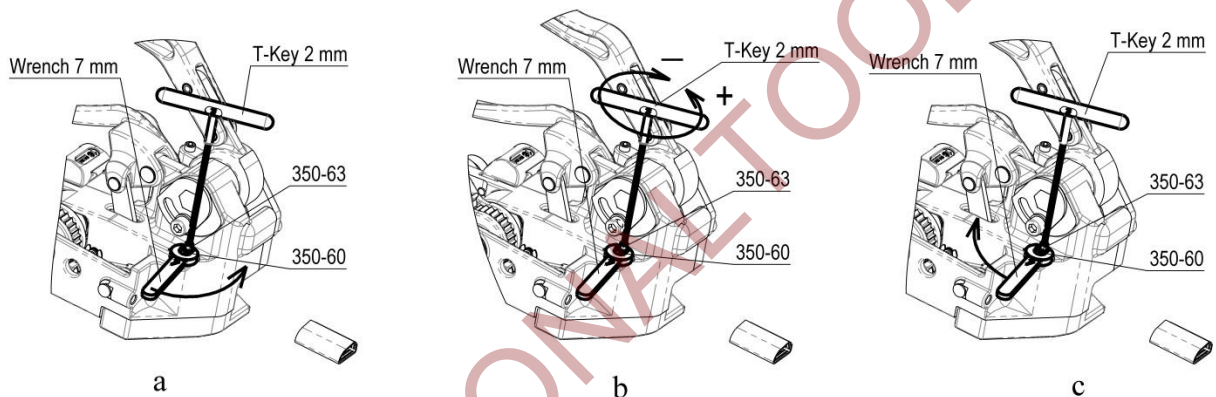


Fig. 1

- 1.2 Hold 350-60 NUT M4 in place and make an adjustment by turning T-Key 2mm (Fig. 1b).

- Clockwise rotation will lower the slot for a seal.
- Counter-clockwise rotation will raise the slot for a seal.

- 1.3 Once required height is achieved, hold T-Key 2mm in place and tighten 350-60 NUT M4 (Fig. 1c).

### 2. Adjustment for strap thickness.

Factory setting for strap thickness is 0.035" (0.9mm). MUL-350/351 can be adjusted to work on strap up to 0.040" (1mm).

- 2.1. Using T-Key 5mm loosen 350-67 SCREW M6x12 (Fig. 2a).

- 2.2. Turn 350-57 ADJUSTMENT PLATE to adjust for required strap thickness (Fig. 2b). 15° turn is roughly equivalent of 0.004" (0.1mm) adjustment in strap thickness.

- Clockwise rotation will adjust for thinner strap.
- Counter-clockwise rotation will adjust for thicker strap.

2.3 Hold 350-57 ADJUSTMENT PLATE in place and tighten 350-67 SCREW M6x12 (Fig. 2c).

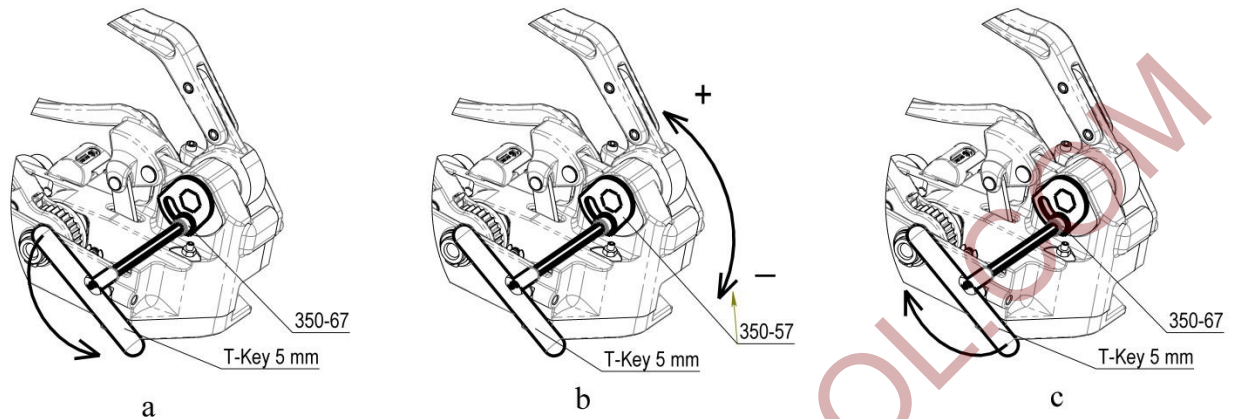


Fig. 2

### 3. 350-50 GRIPPER FOOT adjustment.

Proper position of the 350-50 GRIPPER FOOT is roughly 0.004" (0.1mm) above 350-10 GRIPPER PAD. The gap should be enough to insert a piece of paper and remove it without damaging the paper. (Fig. 3)

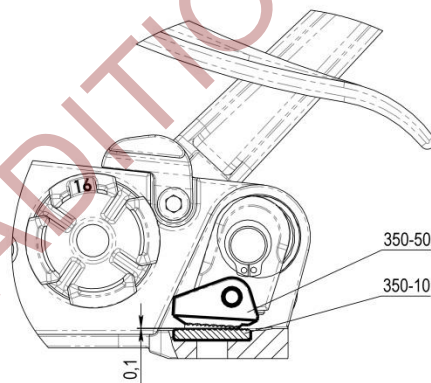


Fig. 3

3.1. Move 350-11 TENSION HANDLE to a position shown on Fig. 4a.

3.2. Raise 350-02 HANDLE against the stop (Fig. 4a).

3.3. Hold 350-69 SET SCREW M5x30 with T-Key 2.5mm and loosen 350-68 NUT M5 (Fig. 4a).

3.4. Turn T-Key 2.5mm to adjust 350-50 GRIPPER FOOT position (Fig. 4b).

- Clockwise rotation will raise the gripper foot.
- Counter-clockwise rotation will lower the gripper foot.



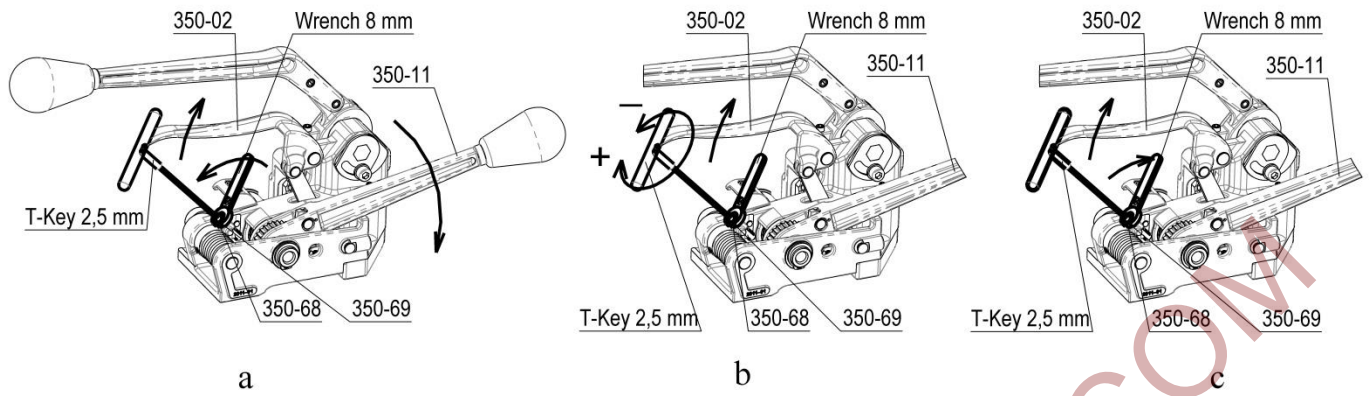


Fig. 4

3.5. Hold 350-69 SET SCREW M5x30 in place and tighten 350-68 NUT M5 (Fig. 4c).