

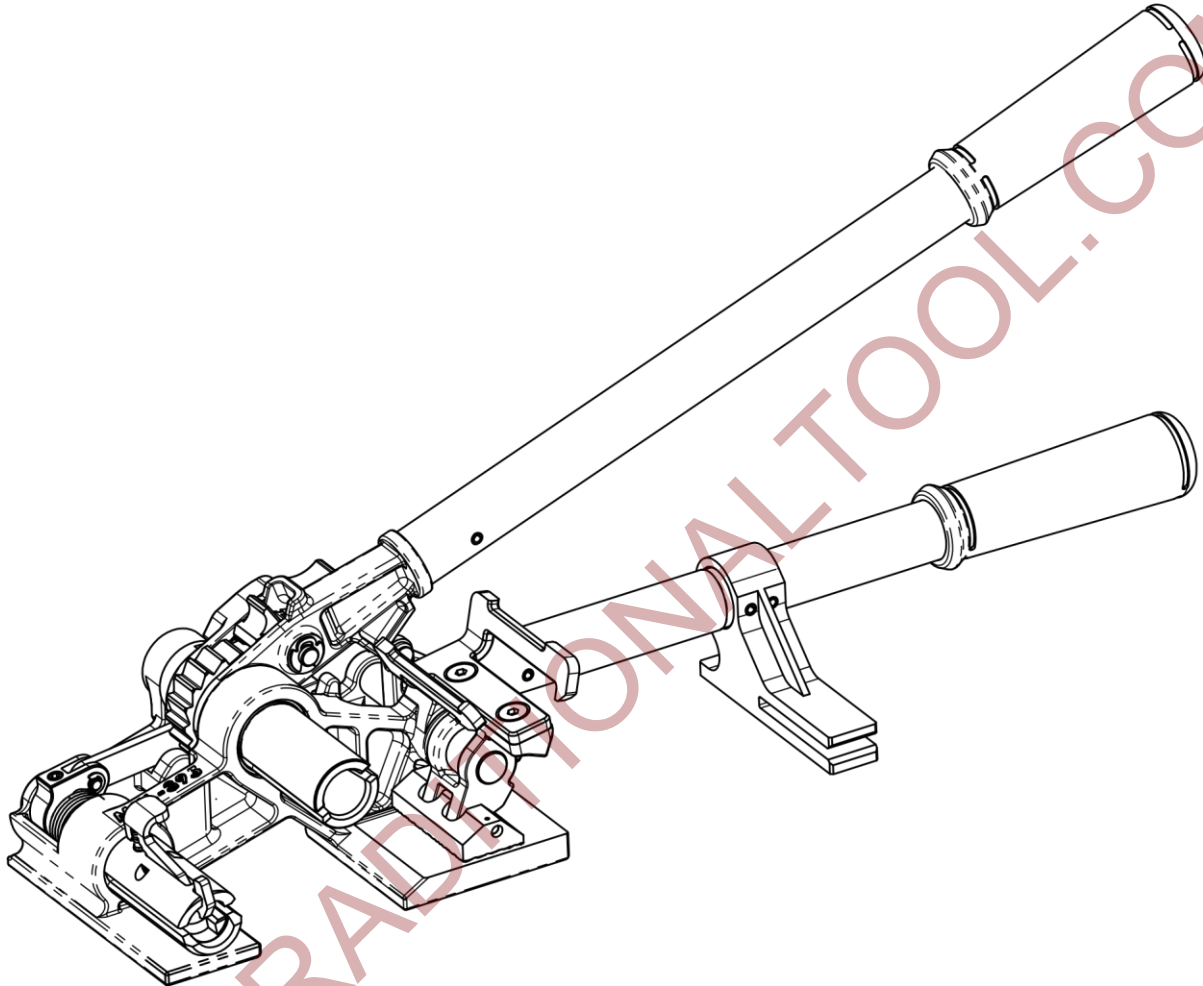
MUL-395 PART LIST

Heavy Duty Tensioner for Lashing Applications

No	KEY No	DESCRIPTION	QTY.	No	KEY No	DESCRIPTION	QTY.
02	395-02	SET SCREW M6x12	5	40	395-40	ROLLER PIN	1
04	395-04	ARM	1	41	395-41	GRIPPER LEVER	1
05	395-05	CUTTER LEVER	1	42	395-42	SPRING BUSHING	1
06	395-06	CUTTER PIN	1	43	395-43	GRIPPER LEVER SPRING	1
07	395-07	E-RING 4	1	45	395-45	COUNTERSUNK HEAD SCREW M6x12	2
08	395-08	ARM PIN	2	46	395-46	BUCKLE	1
09	395-09	BUSHING	1	47	395-47	GRIPPER SHAFT	1
10	395-10	CUTTER BUSHING	1	48	395-48	GRIPPER FOOT SHAFT	1
11	395-11	KLIPRING 5/8"	1	49	395-49	GRIPPER HOLDER	1
12	395-12	WASHER	1	50	395-50	STOP BUSHING	1
13	395-13	CUTTER PAWL	1	51	395-51	SPRING	1
14	395-14	SPRING	1	53	395-53	GRIPPER FOOT SPRING	1
15	395-15	PLANE BEARING SMALL	1	54	395-54	GRIPPER FOOT	1
17	395-17	RETAINING PAWL SPRING	1	55	395-55	WINDLASS	1
18	395-18	RETAINING PAWL	1	56	395-56	PLANE BEARING LARGE	1
19	395-19	RATCHET WHEEL	1	57	395-57	RETAINING PAWL SHAFT	1
20	395-20	HANDLE PLATE	1	61	* 395-61	HOOK	1
21	395-21	COUPLING	1	62	* 395-62	CUTTER HOUSING	1
22	395-22	CUTTER LEVER	1	63	* 395-63	HOOK SPRING	1
23	395-23	KLIPRING 5/16"	2	64	* 395-64	SET SCREW M5x5 DOG POINT	1
24	395-24	TENSION PAWL SHAFT	1	65	* 395-65	CUTTER SPRING	1
25	395-25	RETURN PAWL	1	66	* 395-66	CUTTER	1
26	395-26	TENSION PAWL	1	70	395-70	BASE	1
27	395-27	TENSION PAWL SPRING	1	71	395-71	SPRING PIN 5x25	2
28	395-28	TENSION PAWL SPRING PIN	1	72	395-72	TENSION HEAD	1
29	395-29	SPRING PIN 3/32"x7/16"	4	73	395-73	LEVER SHORT	1
30	395-30	RETURN PAWL SPRING	1	74	395-74	LEVER LONG	1
34	395-34	HANDLE GRIP	2	75	395-75	SPRING PIN 5x32	2
37	395-37	WASHER 5,3	1	76	395-76	STRAPPING SUPPORT	1
38	395-38	COTTER PIN 1,2x8	1	78	395-78	SEALING RING	1
39	395-39	ROLLER	1	79	395-79	SCREW	1

MUL-395 Tensioner for LASHING

Operation Manual



Strap Type	Lashing
Strap Width	1 1/2" (38 mm) to 2" (50 mm)
Strap Thickness	All existing straps
Joint Type	Buckle
Weight	12.2 lbs (5.5 kg)
Footprint	L: 7"; W: 4.75"
Handle Length	18"

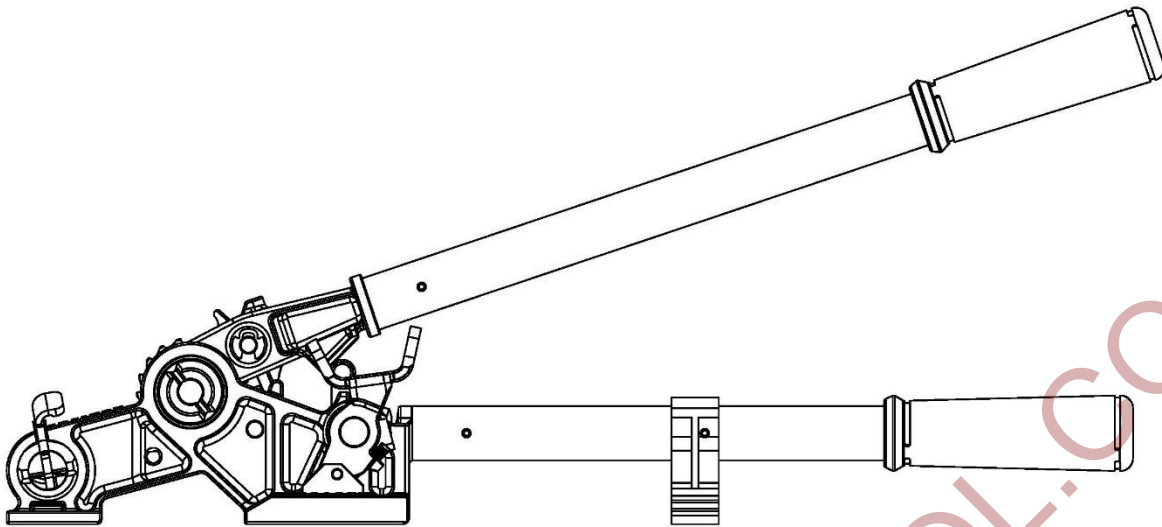


Fig. 1 – Starting Position

1. Raise **Gripper Foot 54** by pressing down on **Tension Handle 35**. Load bottom strap **101** under **Cutter Housing 62**, under **Gripper Foot 54** and through **Strapping Support 44** as shown on Fig. 2.

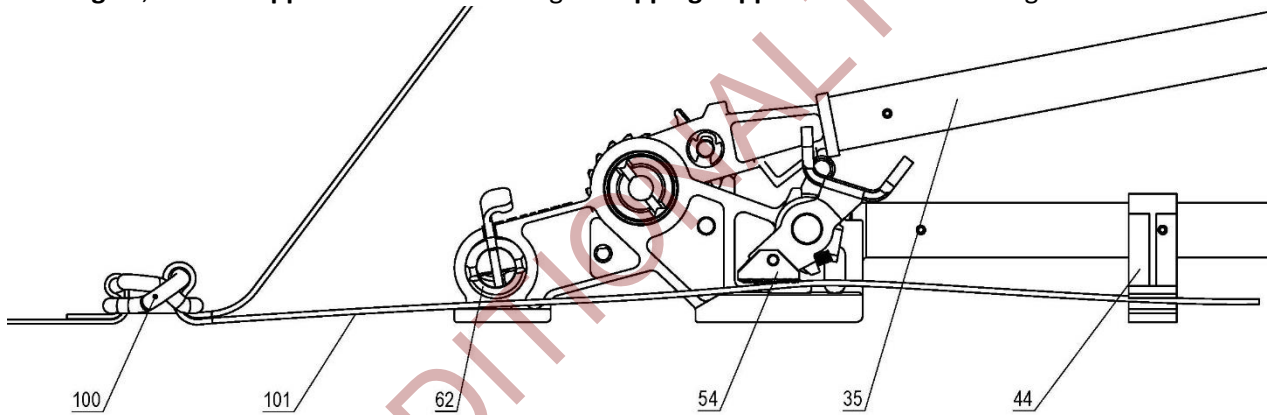


Fig. 2

2. Press down on **Hook 61** and load upper strap **102** through **Cutter Housing 62**, through **Windlass 55**, under the first prong of **Guide 46** and over the second prong for 1.5" strap as shown on Fig. 3, or over the first prong of **Guide 46** and under the second prong for 2" strap as shown on Fig. 4.

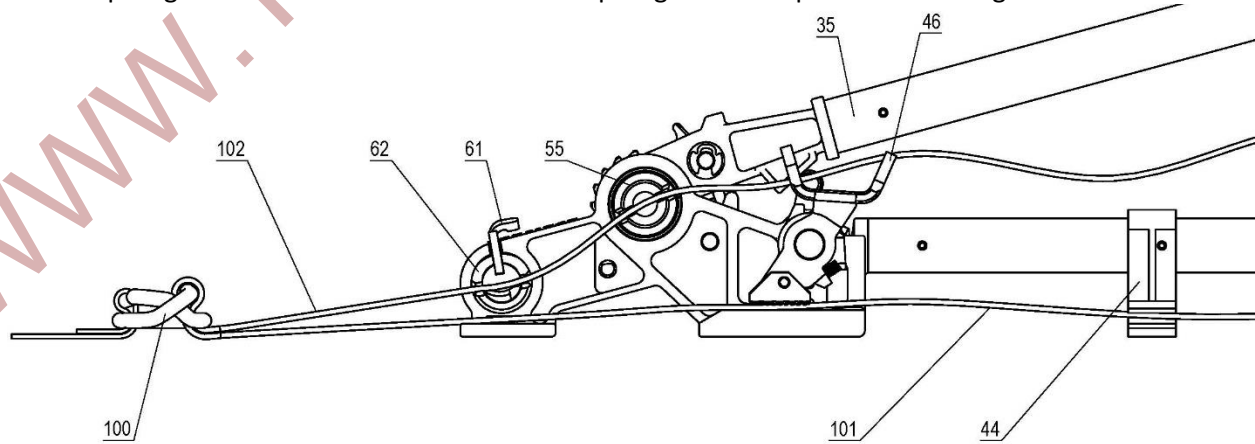


Fig. 3

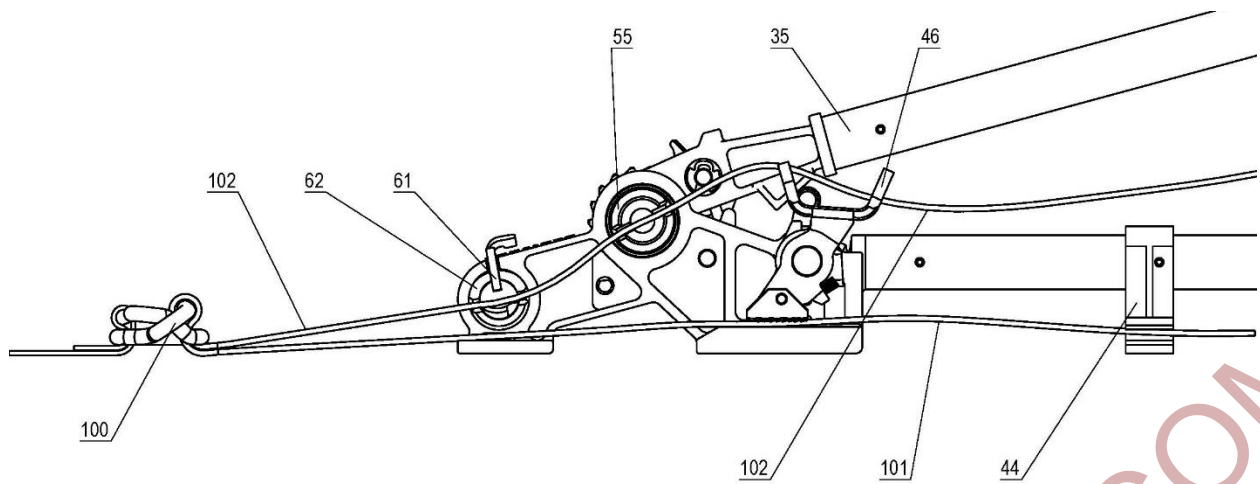


Fig. 4

3. Apply tension by ratcheting **Tension Handle 35** as shown on Fig. 5. If it becomes necessary to loosen the tension without cutting the strap, press down on Tension Handle to release Gripper Foot and Windlass.

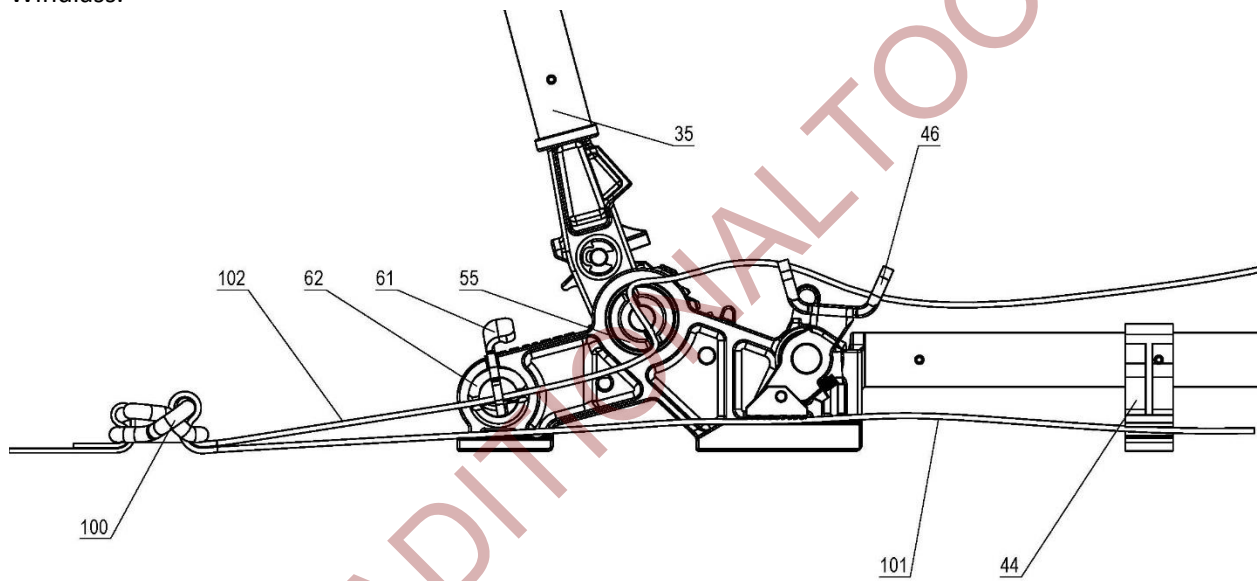


Fig. 5

4. Once satisfactory tension is achieved the strap is ready to be cut. With Tension Handle in the vertical position push on **Cutter Lever 22** (as shown on Fig. 6) to engage the cutter and push **Tension Handle 35** down until the strap is cut. The operation cycle is now complete.

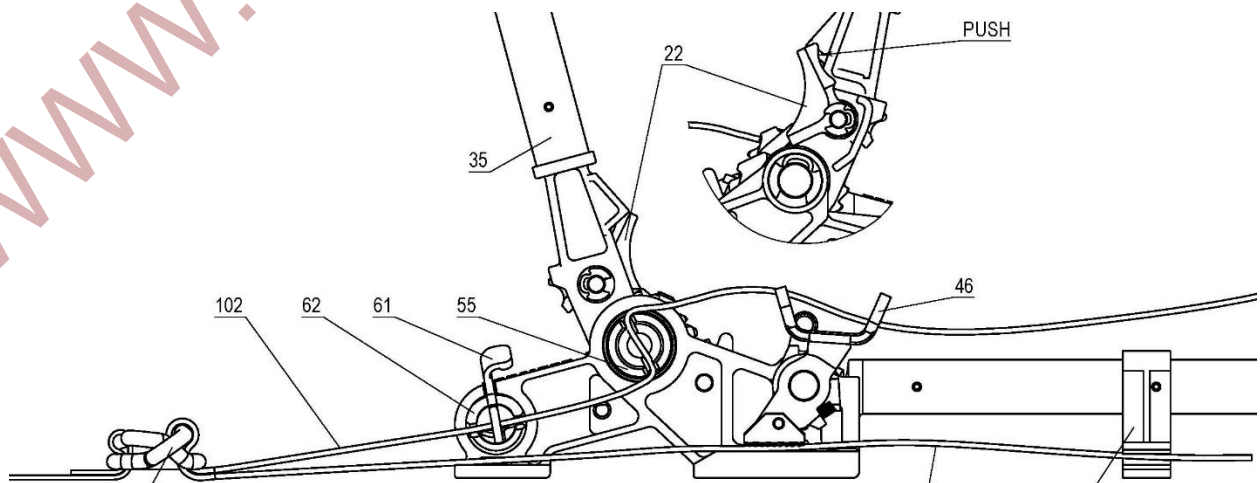


Fig. 6