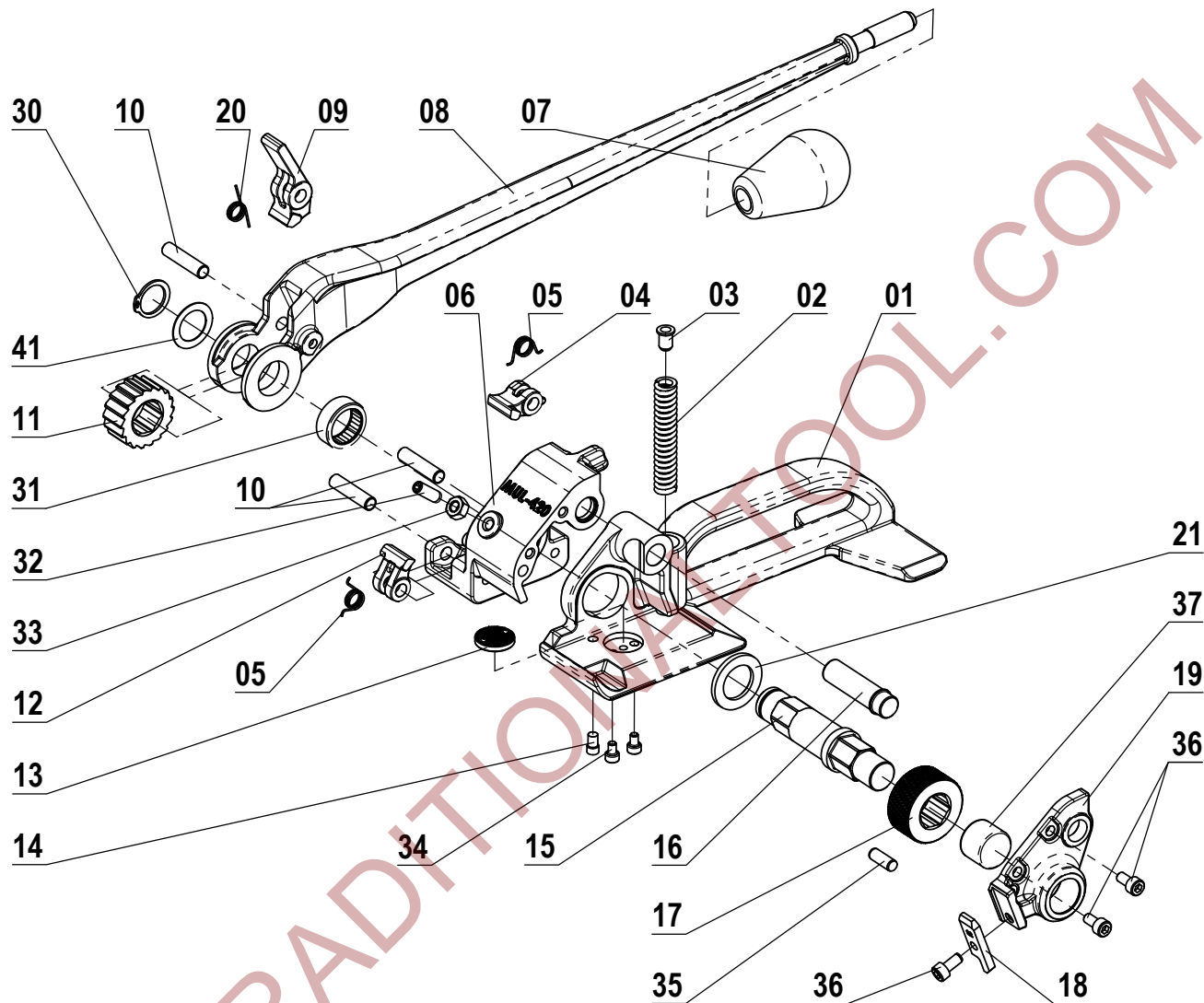


MUL-420

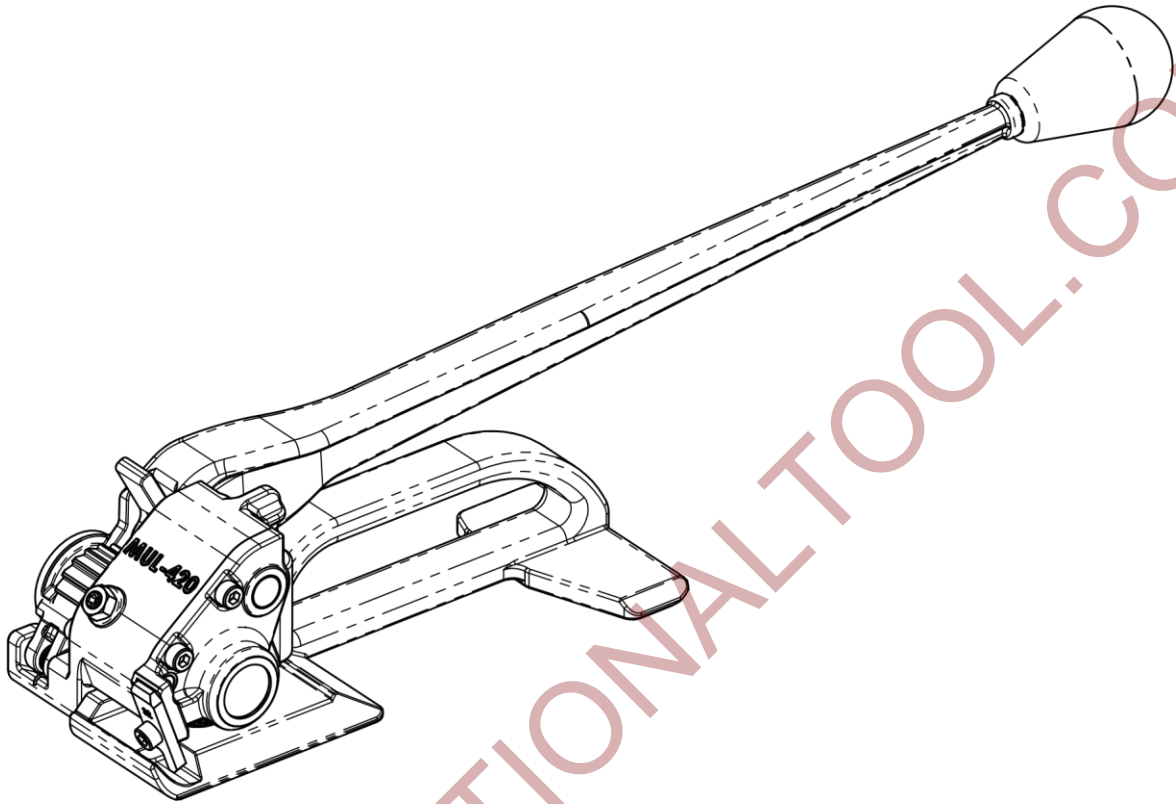
Heavy Duty Steel
 Feedwheel Tensioner up to 1 1/4"



No	KEYNo	DESCRIPTION	QTY.	No	KEYNo	DESCRIPTION	QTY.
01	420-01	BASE	1	16	420-16	FEED WHEEL SUPPORT SHAFT	1
02	420-02	FEED WHEEL SUPPORT SPRING	1	17	420-17	FEED WHEEL	1
03	420-03	SPRING BUSHING	1	18	420-18	STRAP GUIDE 19-32	1
04	420-04	RETAINING PAWL REAR	1	19	420-19	COVER	1
05	420-05	RETAINING PAWL SPRING	2	20	420-20	PAWL SPRING	1
06	420-06	FRAME	1	21	420-21	WASHER	1
07	420-07	KNOB	1	30	420-30	RETAINING RING 17	1
08	420-08	TENSION HANDLE	1	31	420-31	BEARING LARGE	1
09	420-09	TENSION PAWL	1	32	420-32	ADJUSTMENT SCREW M6x16	1
10	420-10	PIN	3	33	420-33	NUT M6	1
11	420-11	RATCHET WHEEL	1	34	420-34	SCREW M4x6	2
12	420-12	RETAINING PAWL FRONT	1	35	420-35	DOWEL PIN 6x16	1
13	420-13	CLUTCH PLUG	1	36	420-36	SCREW M5x10	3
14	420-14	GUIDE SCREW	1	37	420-37	BEARING SMALL	1
15	420-15	FEED WHEEL SHAFT	1	41	420-41	WASHER	1

MUL-420 Tensioner for STEEL

Operation Manual



Strap Type	Regular Duty/High Tensile Steel
Strap Width	3/4" (19 mm) to 1 1/4" (32 mm)
Strap Thickness	Up to 0.044" (1.1 mm)
Joint Type	Seal
Weight	6.5 lbs (3 kg)
Footprint	L: 3.5"; W: 3.5"
Handle Length	16.5"

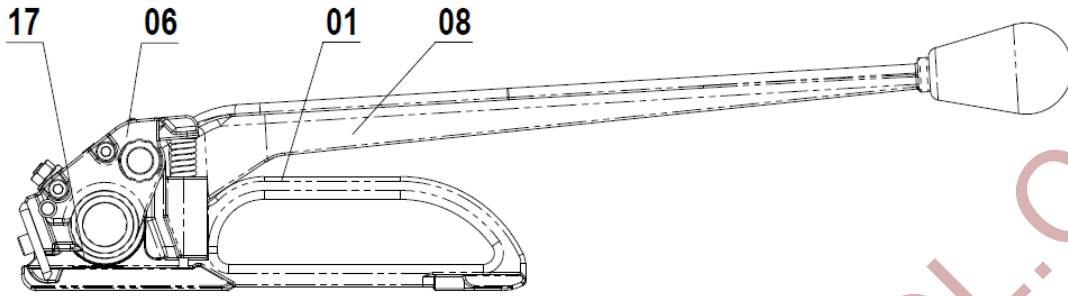


Fig. 1 – Starting Position

1. Based on type of the **Seal 102** used (open or closed), place the seal on the strap accordingly. Press down on **Tension Handle 08** to raise **Frame 06**. Load both straps **100** and **101** under **Feed Wheel 17** and release the **Tension Handle 08** as shown on Fig. 2

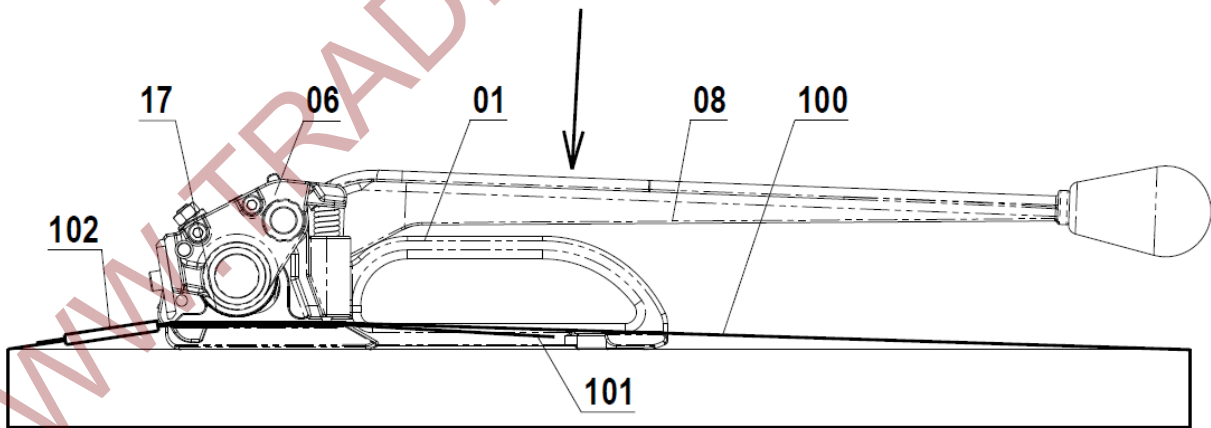


Fig. 2

2. Apply tension by ratcheting **Tension Handle 08** as shown on Fig. 3.

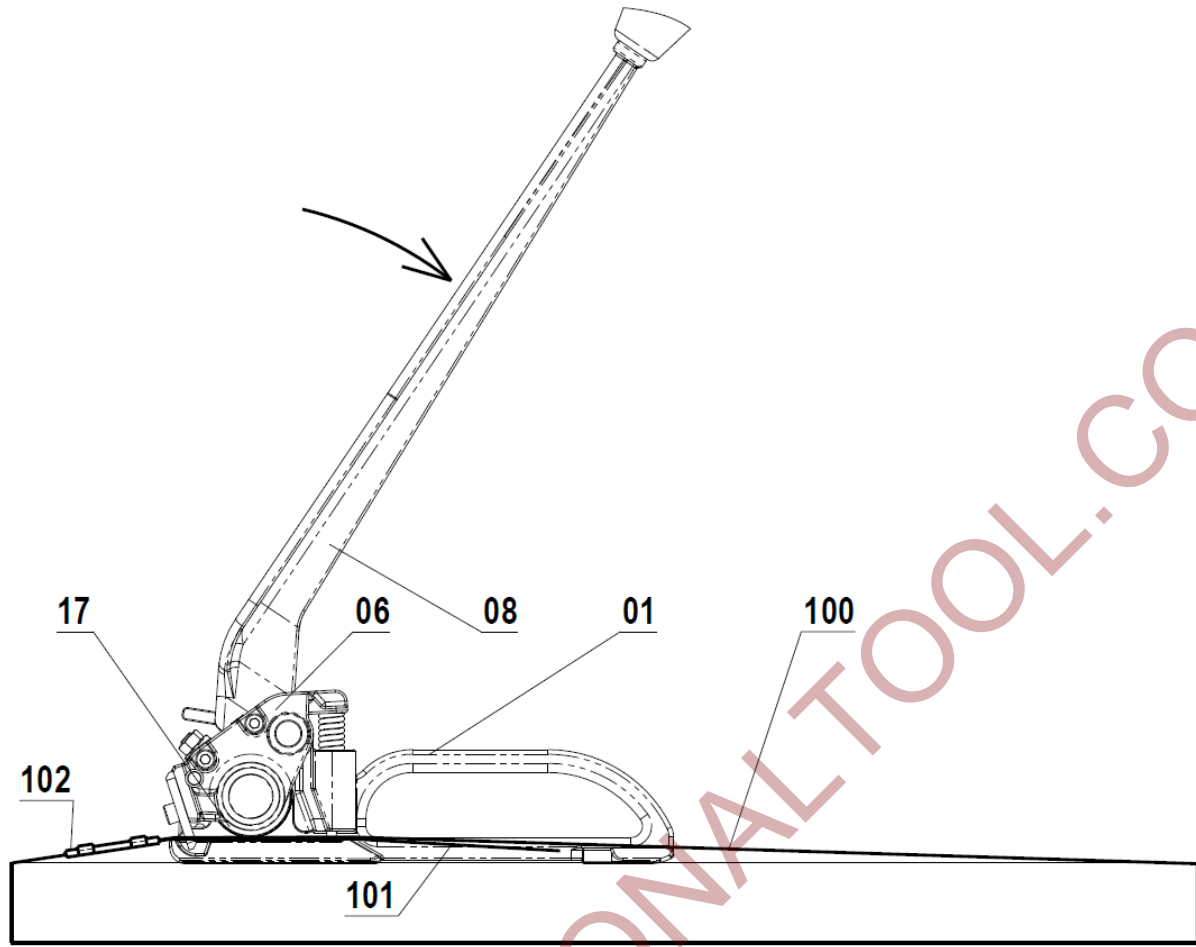


Fig. 3

3. Once satisfactory tension is achieved return **Tension Handle 08** back by pressing on **Tension Pawl 09**. Use appropriate sealer to close the **Seal 102**. With the **Seal 102** securely in place press the **Tension Handle 08** to remove the tensioner by sliding the backfoot out to the side followed by the front as shown on Fig. 4. The operation cycle is now complete.

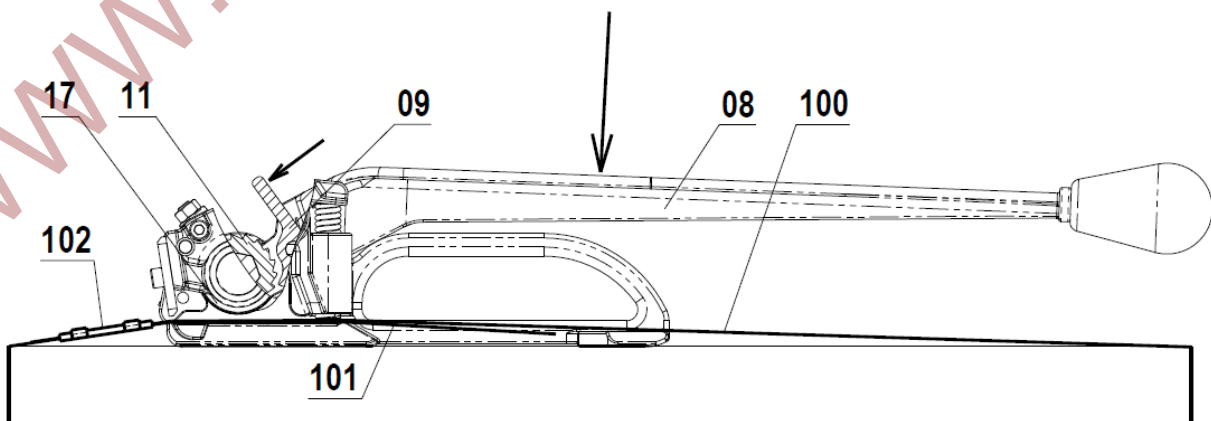


Fig. 4