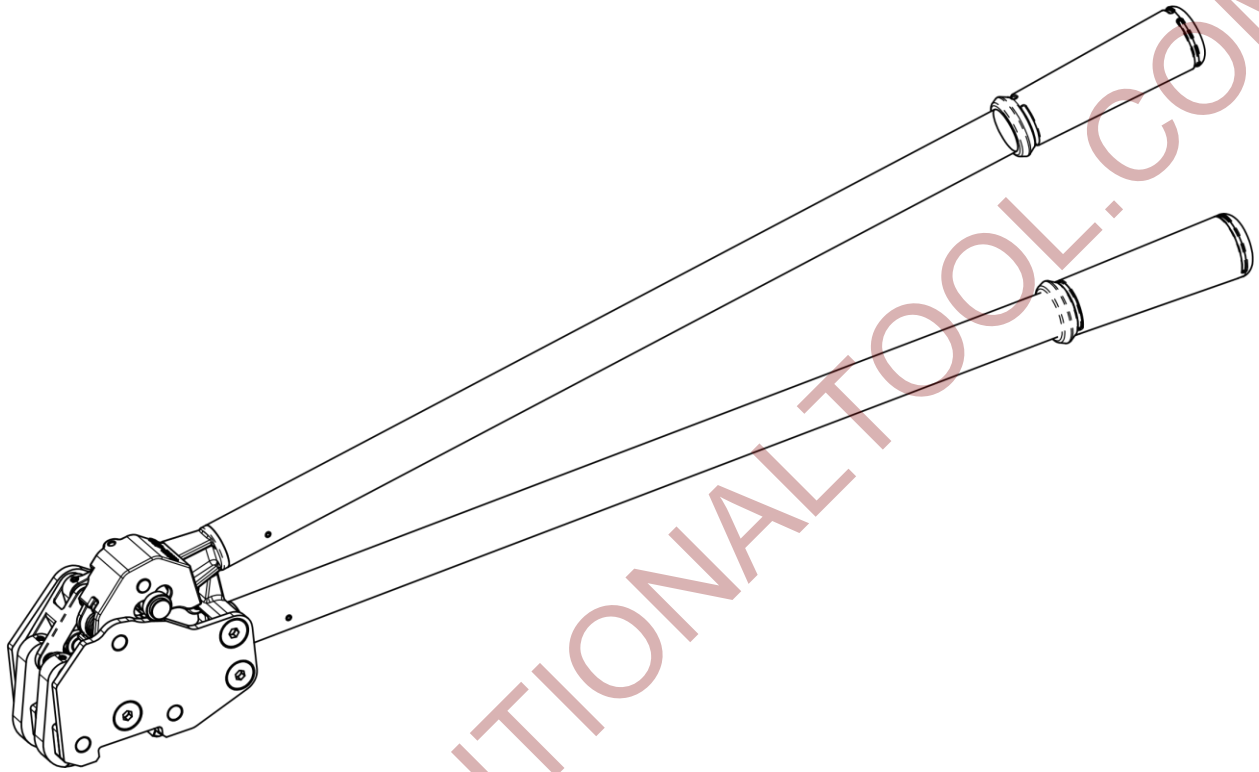


No	KEYNo	DESCRIPTION	QTY.	No	KEYNo	DESCRIPTION	QTY.
01	430-01	STILL HANDLE HEAD	1	16	430-16	REAR LINK SHORT	1
02	430-02	MOVING HANDLE HEAD	1	17	430-17	JAW	4
03	430-03	ARM	1	18	430-18	SIDE PLATE RIGHT	1
04	430-04	LOCK ARM	1	19	430-19	LOCK PIN	1
05	430-05	LOCK PIVOT	1	20	430-20	SPACER	1
06	430-06	HANDLE LEVER	2	21	430-21	FRONT LINK LONG	1
07	430-07	LOCK SPRING	1	22	430-22	FRONT LINK SHORT	1
08	430-08	HANDLE PIN	1	23	430-23	THREADED PIN	1
09	430-09	ANVIL PIN	3	24	430-24	JAW BUSHING	2
10	430-10	LOCK SPRING	1	25	430-25	ROLLER	1
11	430-11	SIDE PLATE LEFT	1	30	430-30	HANDLE GRIP	2
12	430-12	JAW PIN	7	31	430-31	SET SCREW M4x5	9
13	430-13	ANVIL	4	32	430-32	SCREW M8x16	6
14	430-14	ARM PIN	1	33	430-33	SPRING PIN 3x25	2
15	430-15	REAR LINK LONG	1				

# MUL-430 Sealer for STEEL

## Operation Manual



Strap Type	Regular Duty/High Tensile Steel
Strap Width	1 1/4" (32 mm)
Strap Thickness	Up to 0.044" (1.1 mm)
Joint Type	Seal
Weight	7.5 lbs (3.4 kg)
Handle Length	26.5"

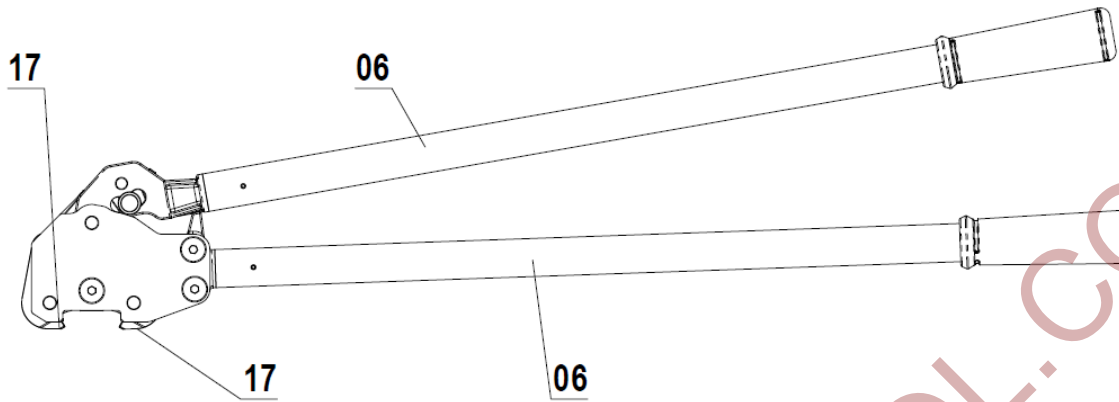


Fig. 1 – Starting Position

1. Place **Jaws 17** of the tool across the middle of the **Seal 102** as shown on Fig. 2

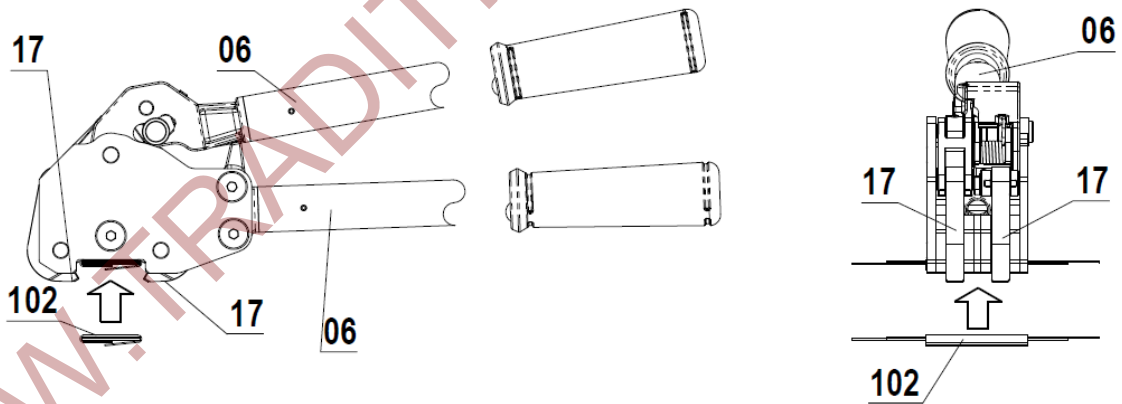


Fig. 2

2. Keeping **Jaws 17** on the middle of the seal move the **Upper Handle Lever 06** until you have a click as shown on Fig. 3. **Lower Handle Lever 06** remains at the same position.

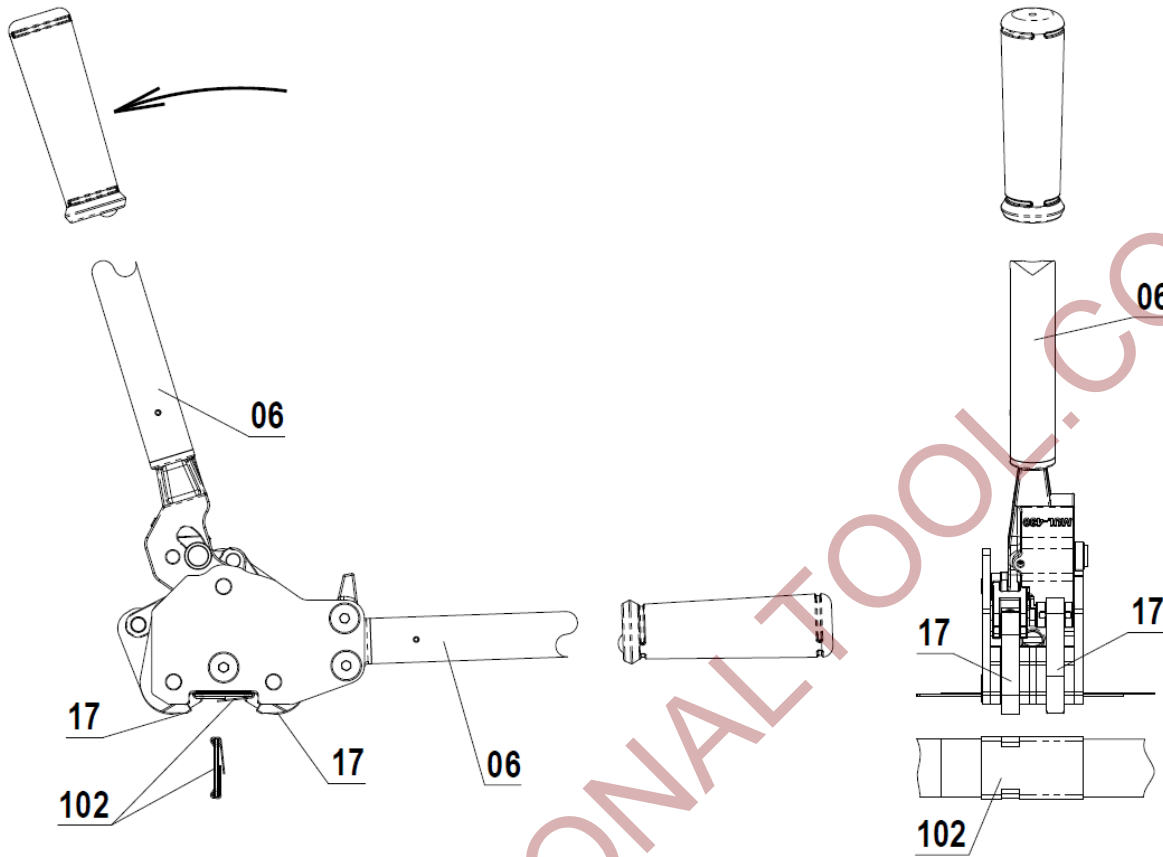


Fig. 3

3. Return the **Upper Handle Lever 06** to the starting position as shown on Fig.4

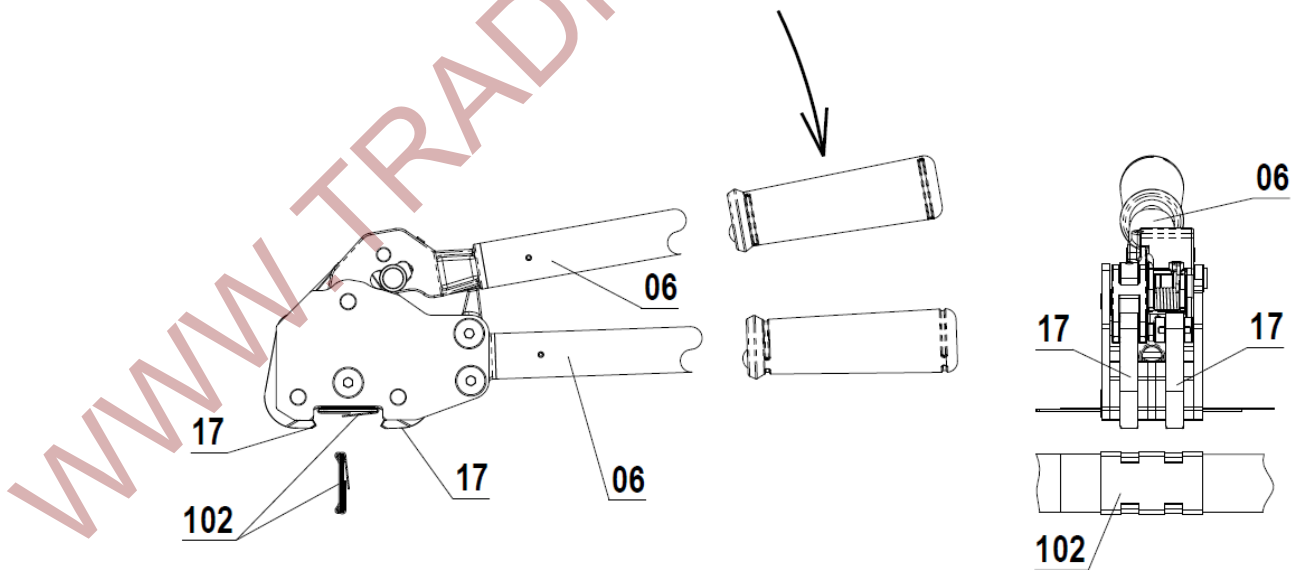


Fig. 4

4. Take the sealer off the seal. The operation cycle is now complete.