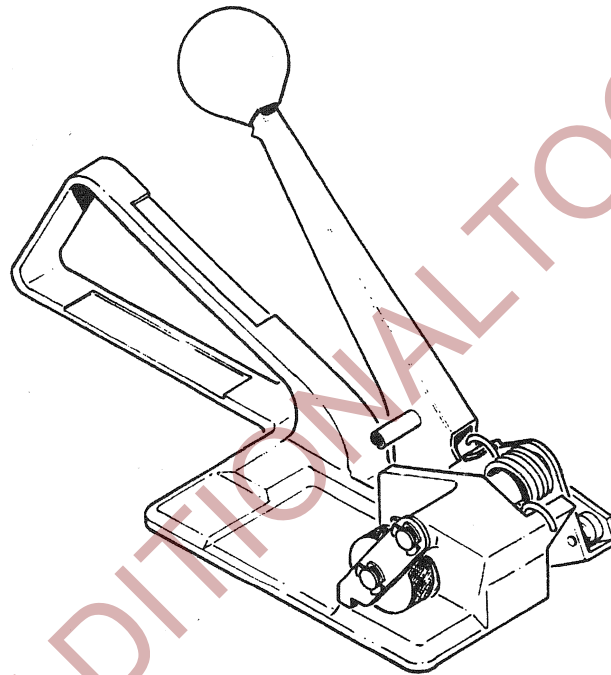


LT STRAP TENSIONER

Part No. 261380



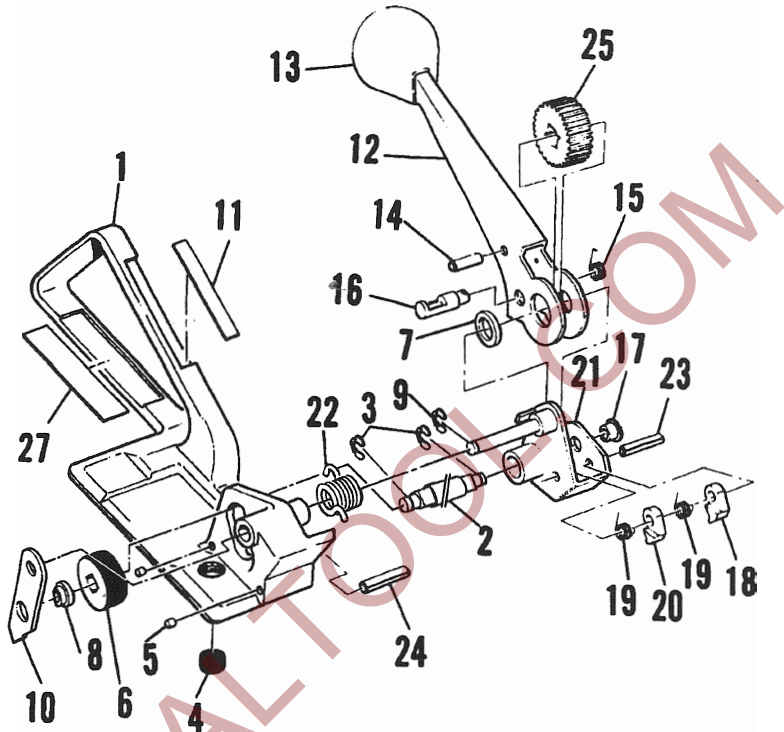
TOOL SPECIFICATIONS

STRAP TYPE	WIDTH	THICKNESS
Apex	3/8"(9.5mm) to 1/2"(12.7mm)	.015"(0.38mm) to .020"(0.50mm)
	5/8"(15.8mm) to 3/4"(19.0mm)	.015"(0.38mm) to .023"(0.58mm)

IMPORTANT - DO NOT DESTROY THIS MANUAL. It is the customer's responsibility to have all operators and service personnel read and understand this manual. Contact your local Signode representative for additional copies of this manual.

LT TENSIONER PARTS LIST

KEY	QTY.	PART #	DESCRIPTION
1	1	261382	Stretcher frame
2	1	261383	<u>Feedwheel shaft</u>
3	2	422139	Klipring #T5304-31
4**	1	261384	<u>Clutch plug</u>
5*	2	261385	Wear pin
6	1	261386	<u>Feedwheel</u>
7	1	023356	Thrust washer
9	1	086190	Truarc Klipring
10	1	422365	<u>Side plate</u>
11	1	262323	Caution sign
12	1	261389	Stretcher handle
13	1	008648	Handle knob
14	1	004169	Stop pin of groove.
15	1	023316	Drive pawl spring
16	1	023314	Driving pawl
17	1	261391	Gear housing bushing
18	1	023312	Long hold pawl
19	2	023311	Hold pawl spring
20	1	023313	Short hold pawl
21	1	261392	Gear housing ass'y.
22	1	023315	Gear housing spring
23	1	010023	Roll pin
24	1	010057	Roll pin
25	1	023309	Ratchet gear
27	1	262322	Nameplate



When ordering parts, please show tool model, part number, and description.

All recommended spare parts are underlined and should be stocked.

* Secure pins (5) with Loctite #242. Pins should be flush with bottom of groove.

** Secure with Loctite #242.

WARNING All parts must be periodically inspected and replaced if worn or broken. Failure to do this can affect a product's operation and can result in personal injury.

CLUTCH PLUG ADJUSTMENT

The LT tool has been factory adjusted to provide a gap, ranging between .001"(.02mm) to .010"(.25mm), between the feedwheel and the clutch plug. If this clearance requires adjusting turn the tool over and, with a screwdriver, turn the gripper plug until the proper gap has been re-established. Use Loctite #242 to secure the plug in place.

