

OPERATION, PARTS AND SAFETY MANUAL

SIGNODE®

**RC-1435-50
MANUAL SEALER**

**IMPORTANT!
DO NOT DESTROY**

**It is the customer's responsibility to
have all operators and servicemen
read and understand this manual.**

Contact your local Signode representative
for additional copies of this manual.

READ ALL INSTRUCTIONS BEFORE OPERATING THIS SIGNODE PRODUCT

WARNING

READ THESE INSTRUCTIONS CAREFULLY. FAILURE TO FOLLOW THESE INSTRUCTIONS CAN RESULT IN SERIOUS PERSONAL INJURY.

STRAP BREAKAGE HAZARD

Improper operation of the tool or sharp corners on the load can result in strap breakage during tensioning, which could result in the following:

- A sudden loss of balance causing you to fall.
- Both tool and strap flying violently towards your face.

Failure to place the strap properly around the load or an unstable or shifted load could result in a sudden loss of strap tension during tensioning. This could result in a sudden loss of balance causing you to fall.

- If the load corners are sharp use edge protectors.
- Positioning yourself in-line with the strap, during tensioning and sealing, can result in severe personal injury from flying strap or tool. When tensioning or sealing, position yourself to one side of the strap and keep all bystanders away.

TRAINING

This tool must not be used by persons not properly trained in its use. Be certain that you receive proper training from your employer. If you have any questions contact your Signode Representative.

EYE INJURY HAZARD

Failure to wear safety glasses with side shields can result in severe eye injury or blindness. Always wear safety glasses with side shields which conform to ANSI Standard Z87.1 or EN 166.



FALL HAZARD

Maintaining improper footing and/or balance when operating the tool can cause you to fall. Do not use the tool when you are in an awkward position.

CUT HAZARD

Handling strap or sharp parts could result in cut hands or fingers. Wear protective gloves.



TOOL CARE

- Inspect and clean the tool daily. Replace all worn or broken parts.
- Lubricate all moving parts weekly unless otherwise specified.

WORK AREAS

Keep work areas uncluttered and well lighted.

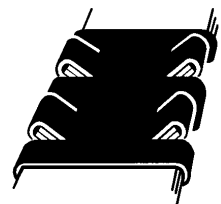
! WARNING

READ THESE INSTRUCTIONS CAREFULLY. FAILURE TO FOLLOW THESE INSTRUCTIONS CAN RESULT IN SERIOUS PERSONAL INJURY.

Signode tools and machines are designed and warranted to work together with Signode strapping and seals. Use of non-Signode strap and seals and/or manufactured or specified replacement parts may result in strap breakage or joint separation while applying strapping to a load or during normal shipping and handling. This could result in severe personal injury.

JOINT FORMATION

- Before using this tool, read its Operation and Safety instructions contained in this manual.
- This tool is a double reverse notch-joint sealers. Each notch-joint must be inspected to make certain it has four (4) good notches. A properly formed notch-joint will appear as shown in the illustration. If the notch-joint does not appear as shown, then the operator must proceed as follows.
 1. Make certain that the tool's operating instructions are being followed before applying another strap.
 2. Cut the strap off and apply a new strap and seal.
 3. An improper formed seal which does not have four (4) good notches, could result in strap separation. Before moving any package be certain that the seal is formed as shown. Inspect the joint to make certain it appears as shown in the illustration. If not, remove the broken strap and check the tool for worn or broken parts. Repair the tool for worn or broken parts. Repair the tool before applying another strap.



MOVING AND STACKING STRAPPED LOADS

Before moving or stacking any strapped load, follow all standard industry practices regarding safe material handling procedures.

CUTTING TENSIONED STRAP

Using claw hammers, crowbars, chisels, axes or simialr tools will cause tensioned strap to fly apart with hazardous force. Use only cutters designed for cutting strap. Read the instructions in the cutter's manual for proper procedures in cutting strap. Before using any Signode product read its Operation and Safety Manual.

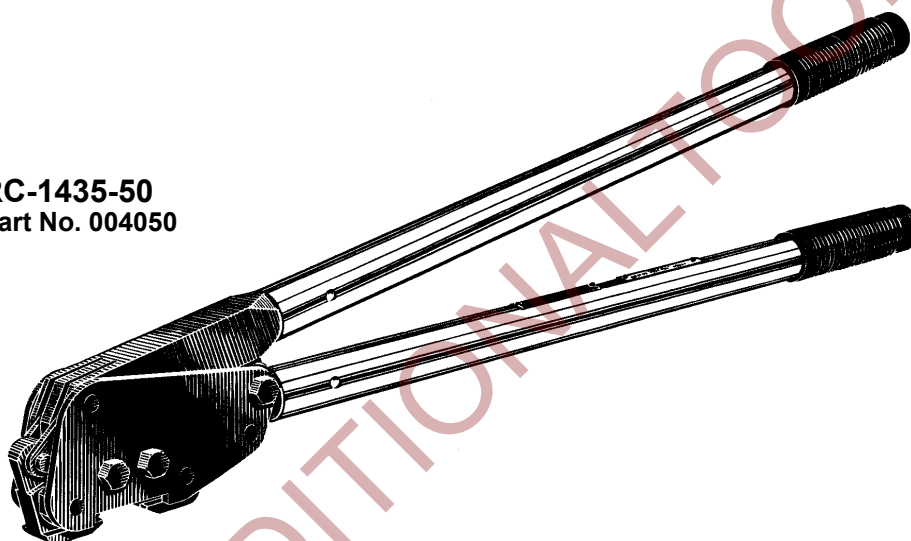
TABLE OF CONTENTS

General Safety Information	2
Specifications	4
Operating Instructions	5
Parts List	6
Maintenance	6

WARNING

Signode tools and machines are designed and warranted to work together with Signode strapping and seals. Use of non-Signode strap and seals and/or manufactured or specified replacement parts may result in strap breakage or joint separation while applying strapping to a load or during normal shipping and handling. This could result in severe personal injury.

RC-1435-50
Part No. 004050



SPECIFICATIONS

MODEL	TYPE	STRAP		SEALS
		WIDTH	THICKNESS	
RC-1435-50	MAGNUS	1-1/4" (31.7mm)	0.031" (0.79mm) Minimum 0.044" (1.11mm) Maximum	114, I, OF, SP

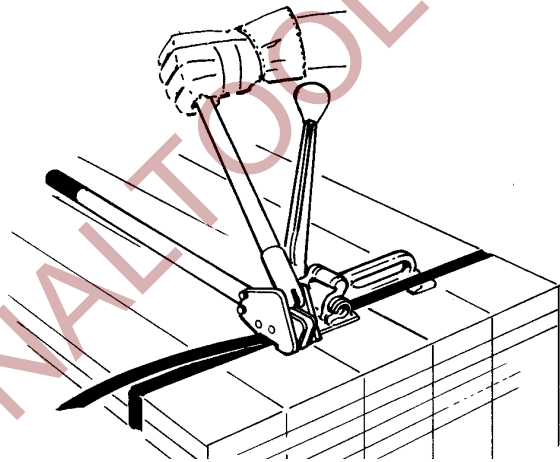
OPERATING INSTRUCTIONS

WARNING

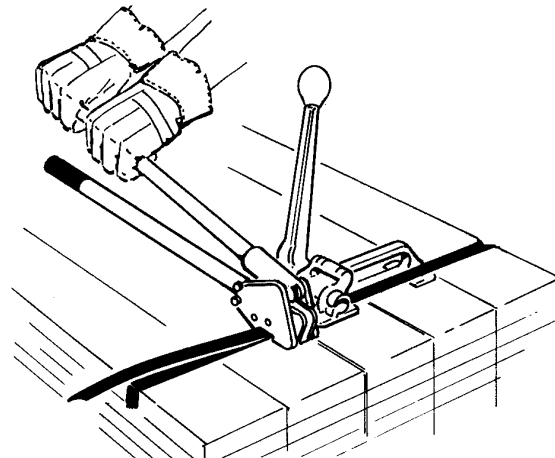
- Wear safety glasses which conform to ANSI Standard Z87.1 or EN 166.
- Stand to one side of the strap while tensioning. Make sure all bystanders are clear before proceeding.
- Failure to follow the above could result in serious personal injury.

NEVER HANDLE OR SHIP ANY LOAD WITH IMPROPERLY FORMED JOINTS. Misformed joints may not secure the load and could cause serious injury. Follow the joint inspection procedures in each sealer's manual.

1. Fully open the sealer handles and position the open jaws to one end of the seal.



2. Bring sealer handles completely together to assure a proper notch.



3. Repeat the notching operation after moving the sealer toward the opposite end of the seal.
4. Remove the sealer. Cut the strap end with an approved cutter placed as close to the seal as possible.
5. To avoid contact with sharp end of the strap, retract the strap end back into the strap dispenser.

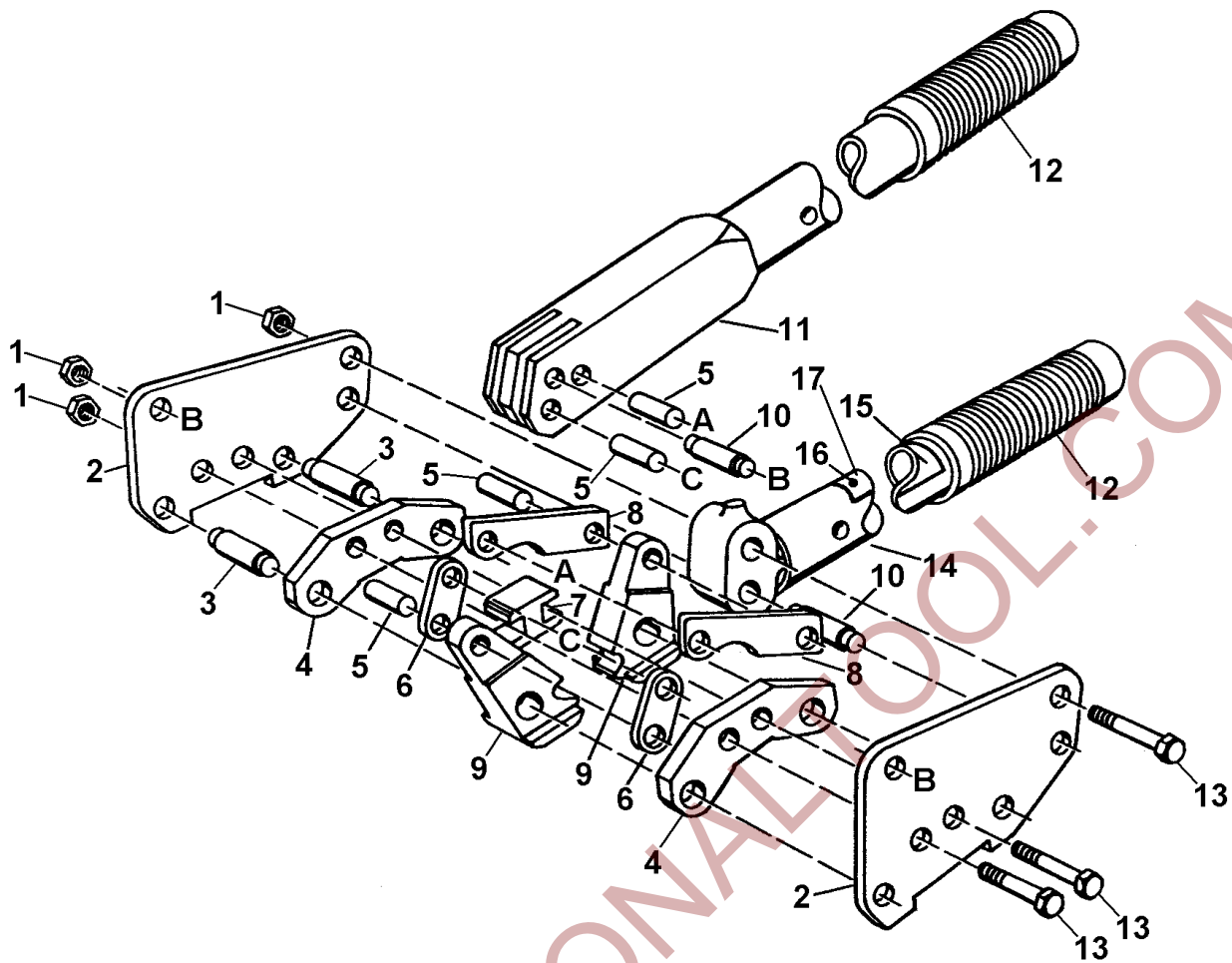
PARTS LIST

<u>KEY</u>	<u>QTY.</u>	<u>PART NO.</u>	<u>DESCRIPTION</u>
1	3	003911	Nut
2	2	004047	Side plate
3	2	004056	Jaw pin
4	2	004046	Notcher
5	4	004049	Link pin
6	2	004048	Front link
7	1	004057	Spacer
8	2	004053	Rear link
9	2	004052	Jaw
10	2	003974	Fulcrum pin
11	1	004054	Upper handle assembly
12	2	020378	Handle grip
13	3	003972	Tie bolt
14	1	020396	Lower handle assembly
15	1	003132	Warning label
16	2	004939	Drive screw
17	1	002480	Nameplate

- When ordering parts, please show tool model, part number and description.
- Standard hardware parts may be obtained from local hardware suppliers.

TOOL MAINTENANCE, CLEANING & LUBRICATION

1. Clean and apply a light weight machine oil to all moving parts on a weekly basis.
2. Clean the feedwheel of the tensioner tool daily with a wire brush.
3. Inspect the tool before each use for worn or broken parts. Replace parts if necessary.



⚠ WARNING

Inspect all parts daily and replace them if they are worn or broken. Failure to do this can affect a product's operation and could result in serious personal injury.