

PARTS LIST

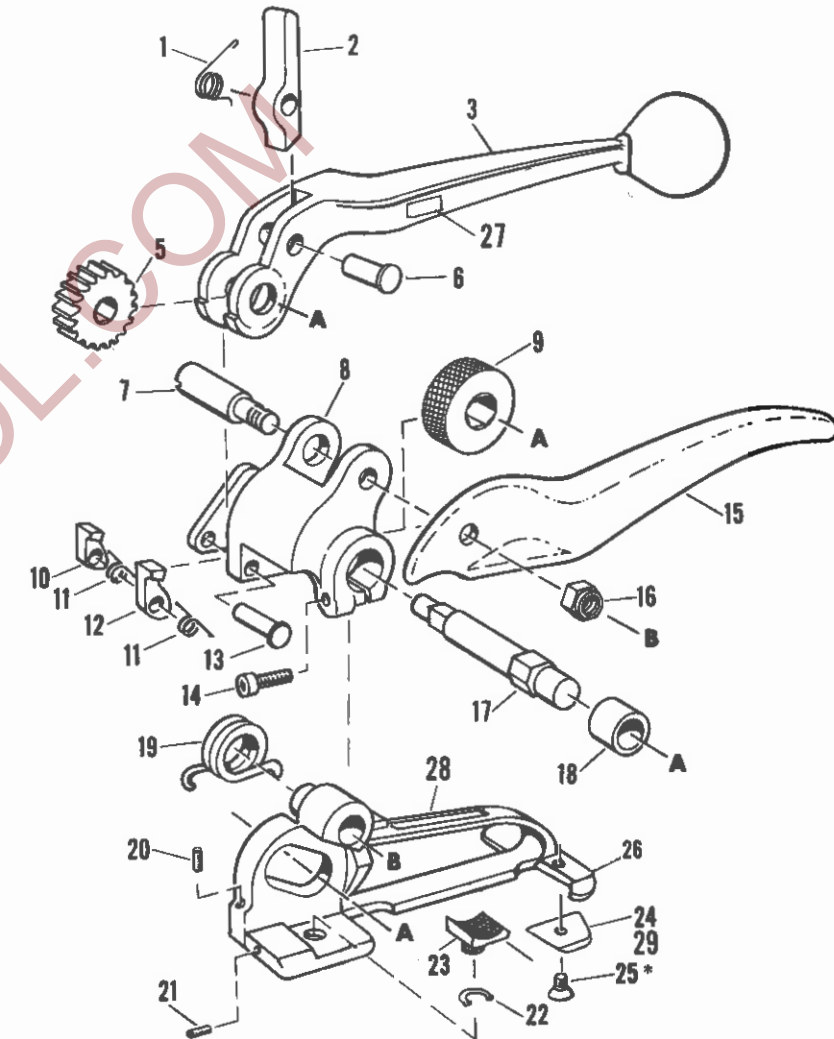
| <u>KEY</u> | <u>QTY.</u> | <u>PART NO.</u> | <u>DESCRIPTION</u> |
|------------|-------------|-----------------|------------------------------------|
| 1 | 1 | <u>003489</u> | <u>Handle pawl spring</u> |
| 2 | 1 | 003492 | Handle pawl |
| 3 | 1 | 003493 | Handle |
| 5 | 1 | 003488 | Ratchet gear |
| 6 | 1 | 003494 | Handle pawl pin |
| 7 | 1 | 023964 | Feedwheel support pin |
| 8 | 1 | <u>003490</u> | <u>Feedwheel support</u> |
| 9 | 1 | <u>023954</u> | <u>Feedwheel</u> |
| 10 | 1 | 003485 | Short retaining pawl |
| 11 | 2 | <u>003483</u> | <u>Retaining pawl spring</u> |
| 12 | 1 | 003484 | Long retaining pawl |
| 13 | 1 | 003486 | Retaining pawl pin |
| 14 | 1 | 004502 | Soc. hd. cap screw, #10-32 x 3/4 |
| 15 | 1 | 023953 | Reaction handle |
| 16 | 1 | 003868 | Flexloc thin nut, 3/8-24 |
| 17 | 1 | 003487 | Feedwheel shaft |
| 18 | 1 | <u>003478</u> | <u>Bearing</u> |
| 19 | 1 | <u>003479</u> | <u>Feedwheel support spring</u> |
| 20 | 1 | 023957 | Fit. pt. set screw, #10-32 x 5/8 |
| 21 | 1 | 023965 | Set screw, #10-32 x 5/8 |
| 22 | 1 | 020711 | Truarc, #5101-37 |
| 23 | 1 | <u>023912</u> | <u>Gripper plug</u> |
| 24 | 1 | <u>023966</u> | <u>Cutter blade</u> |
| 25* | 1 | 023967 | Fit. hd. soc. screw, #10-32 x 5/16 |
| 26 | 1 | 023952 | Base |
| 27 | 1 | 183024 | Nameplate |
| 28 | 1 | 182997 | Caution plate |
| 29 | 1 | 098228 | Protective cover |
| --- | 1 | 023963 | Brush |

* Apply one drop of Loctite #242 Sealant to cleaned parts. Allow 12 hours to set if possible. NOTE: Do not apply to small screws or close to moving parts as liquid spreads easily.

When ordering parts, please show tool model, part number, and name.

All recommended spare parts are underlined and should be stocked.

Standard hardware parts may be obtained at any local hardware supply.



⚠ WARNING

All parts must be periodically inspected and replaced if worn or broken. Failure to do this can affect a tool's operation and present a safety hazard.