



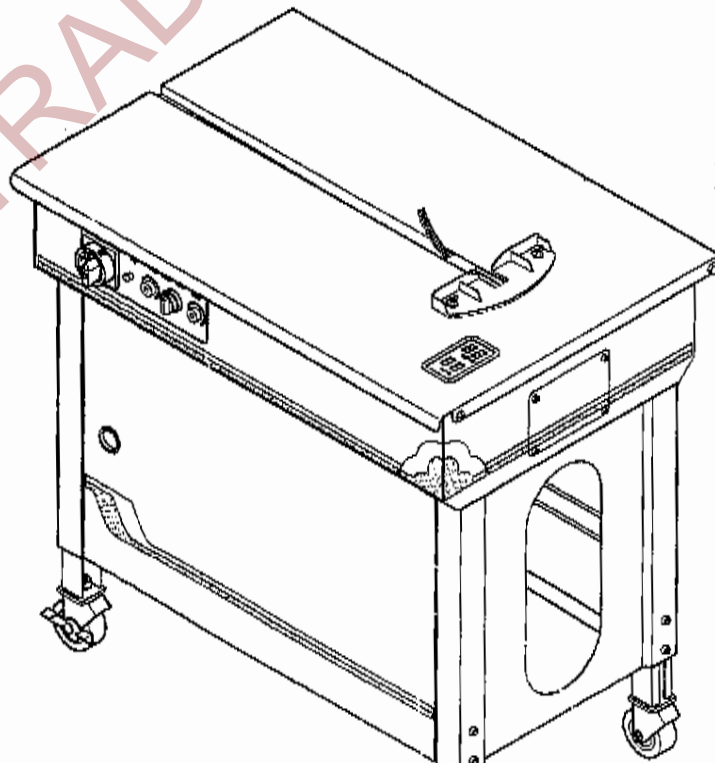
SEMI AUTOMATIC POLYPROPYLENE STRAPPING MACHINE

VISTA

OPERATION

&

MAINTENANCE MANUAL



For Parts & Service 1-877-862-6699

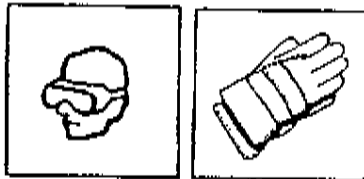
!! GENERAL SAFETY INSTRUCTIONS FOR **CYKLOP** POWER STRAPPING MACHINES !!

This manual gives you information on how to operate and maintain your **CYKLOP** Strapping Machine.

ONLY TRAINED PERSONNEL SHOULD OPERATE OR SERVICE THIS MACHINE.

Read these safety instructions before operating or servicing your machine.

BEFORE MACHINE OPERATION



- Read the operating instructions.
- Wear eye or face and hand protection.
- Inspect the machine for unsafe conditions DAILY and replace any worn or broken parts.
- Check that all guards are in place and all safety devices are working properly.
- Do not operate machine with any safety devices removed.
- Make sure machine is clear of all tools, debris and other objects not related to machine function.

DURING MACHINE OPERATION

- Do not wear loose clothing or jewelry.
- Never put any part of your body into, under, or near moving machinery.
- Keep hands out of the strap chute area.

AFTER MACHINE OPERATION

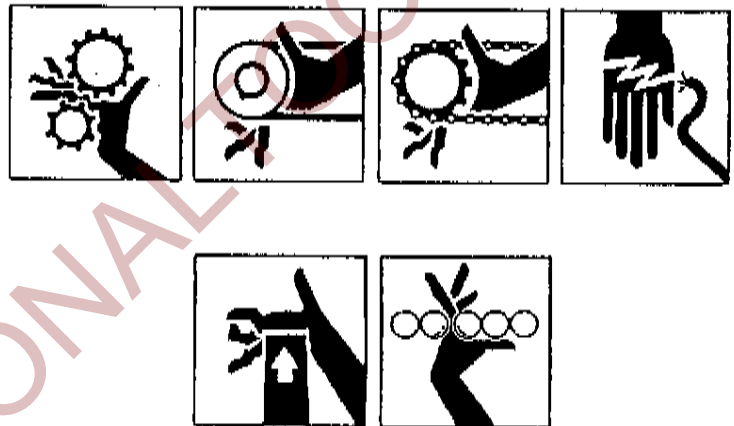
- Unplug all electric and air power.
- Remove all tools, debris, and other objects from machine area.

SIGNS

- Read all of the signs on machine.

-Do not remove any signs from machine. For Parts & Service 1-877-862-6699

SERVICING MACHINE



- Unplug all electric and air power.
- Remove packages from machine.
- Do not stand or walk on conveyor to service machine.
- Follow the maintenance instructions in your manual.
- Use the correct tools to repair machine.
- Never adjust, repair, or oil moving machinery.

ADDITIONAL CONSIDERATIONS

- To insure proper operation of machine, use the specified electric and/or air power sources.
- Do not overload the machine by exceeding **CYKLOP** recommended performance limitations.
- Do not attempt to alter machine design unless written approval is received from DELTA STRAPPING SYSTEMS.
- Keep your Operation, Service, and Safety Manual at your machine. Refer to it often.
- Additional Safety Instructions are located throughout this Manual. They serve to

1. General safety remarks:

(a) Basic operation	1
(b) Basic safety precautions.....	1
(c) Safety instructions governing specific operational phases	1-2
(d) Warning of electrical dangers.....	2-3
(e) Grounding instructions shall include the following.....	3
(f) Extensions cords.....	4

2. Areas of application	4
-------------------------------	---

3. Machine description	4
------------------------------	---

4. Description of the safety devices	4
--	---

5. Basic specifications	5
-------------------------------	---

6. Minimum requirements	5
-------------------------------	---

7. Technical data	6
-------------------------	---

8. Machine and operating elements	7
---	---

9. Installation diagram	8
-------------------------------	---

10. Wiring diagram	9
--------------------------	---

11. Strap-up and functioning sequence	10
---	----

12. Threading diagram	10
-----------------------------	----

13. Strap tension adjustment	11
------------------------------------	----

14. Maintenance and lubrication	12
---------------------------------------	----

15. Maintenance of the unit	12
-----------------------------------	----

1. General safety remarks

(a) Basic operation

The handbook and the safety remarks are to be read before use. The operator handbook should be kept with the machine at all times. Intervals for maintenance and inspections are to be adhered to.

This machine was built with state of the art technology and rigid adherence to safety standards.

Unless used properly, it can cause injury or harm to operators or persons in close proximity to the machine. In addition, improper use can cause damage to the machine or property around the machine.

(b) Basic safety precautions

The user is to be instructed in all other generally applicable legal and other mandatory regulations relevant to accident prevention and environmental protection in addition to the operating instructions.

For safety reasons, long hair must be tied back or otherwise secured, garments must be close fitting and no jewelry may be worn.

Use protective equipment whenever required by circumstances or by law.

Carefully observe all safety instructions and warnings attached to the machine and make sure that they are always complete and perfectly legible.

Always make certain that persons being trained and instructed in working on or with the machine are permanently supervised by an experienced person.

Work on the electrical system and equipment of the machine is only to be carried out by a skilled electrician or by persons under the supervision and guidance of a skilled electrician and in accordance with rules and regulations of electrical engineering.

(c) Safety instructions governing specific operational phases

Avoid any operation mode that might be unsafe.

All necessary precautions to ensure that the machine is only used being in a safe and reliable state are to be taken. The machine is only to be operated if all protective and safety-oriented devices, including removable safety devices, emergency shut-off equipment, sound-protecting elements and exhaust systems are in right place and fully functional.

The machine is to be checked for damage and defects at least once per work shift. Any changes including the working behavior of the machine are to be reported to competent persons immediately. If necessary, the machine is to be stopped and locked immediately.

In case of any malfunction the machine must be stopped and locked until the defect is rectified.

Generally make sure that nobody is at risk before starting up the machine.

All personnel that will be operating this machine should be thoroughly trained in all phases of operation and safety.

Always tighten unscrewed connections after maintenance and repair.

After completing maintenance and repair all safety devices removed for setting up or repairing the machine must be reinstalled and check for functionality prior to putting the machine back in service.

To minimize the environmental impact all consumables and replaced parts must be disposed of safely.

Before starting the machine check that the accessories have been stowed away safely.

Do not attempt any operation that may be a risk to the stability of the machine.

Do not step on conveying equipment.

(d) Warning of electrical dangers

Use only original fuses with specified current rating. Switch off the machine immediately in case of trouble in the electrical system.

Only a skilled electrician or specially instructed personnel under the supervision of a skilled electrician may work on the electrical system and always in accordance with the applicable electrical engineering rules.

The power supply should be disconnected from the machine before performing any maintenance. After disconnecting the power supply, it is essential to verify that the machine is not getting power before proceeding. In addition, always check for proper grounding.

The electrical equipment of the machine is to be checked and inspected at regular intervals. Loose connections or scorched wires must be replaced at once.

If maintenance must be performed on the machine while still connected to a power source, or in a "live" mode, always have a stand by person ready to disconnect the power immediately, if necessary. The work area should always be marked by safety tape in accordance with required regulations, and always use only properly insulated tools.

Ground the feeder cable and any components with a ground rod before starting to work on high-voltage assemblies, always disconnect the power supply before grounding .

Before restarting the machine carefully refit and fasten all parts removed for transport.

Always disconnect the power supply before moving the machine.

(e).Grounding instructions shall include the following:

-GROUNDING INSTRUCTIONS

-This product should be grounded. In the event of an electrical short circuit, grounding reduces the risk of electric shock by providing an escape wire for the electric current. This product is equipped with a cord having a grounding wire with an appropriate grounding plug. The plug must be plugged into an outlet that is properly installed and grounded in accordance with all local codes and ordinances.

-DANGER- Improper installation of the grounding plug can result in a risk of electric shock. If repair or replacement of the cord or plug is necessary, do not connect the grounding wire to either flat blade terminal. The wire with insulation having an outer surface that is green with or without yellow stripes is the grounding wire.

-Check with a qualified electrician or serviceman if the grounding instructions are not completely understood, or if in doubt as to whether the product is properly grounded. Do not modify the plug provided; if it will not fit the outlet, have the proper outlet installed by a qualified electrician.

-This product is for use on a nominal 120(230)-volt circuit and has a grounding plug . Make sure that the product is connected to an outlet having the same configuration as the plug.

(f) Extensions Cords:

-Use only a 3-wire extension cord that has a 3-blade grounding plug, and a 3-slot receptacle that will accept the plug on the product. Make sure your extension cord is in good condition. When using an extension cord, be sure to use one heavy enough to carry the current your product will draw. An undersized cord will cause a drop in line voltage resulting in loss of power and overheating. Refer to the following table:

<u>Length (ft)</u>	<u>25</u>	<u>50</u>	<u>100</u>	<u>150</u>	<u>200</u>	<u>250</u>	<u>300</u>	<u>400</u>	<u>500</u>
<u>Gauge</u>	16	14	10	8	6	6	6	4	4

2. Areas of application

This plastic strapping machine can be used for a broad range of applications where the minimum package width is at least 80mm, and the height is 30mm. When equipped with a "small package option", the machine will be acceptable for packages as small as 45mm wide and 25mm high.

This machine is particularly suitable for heavy packaged goods as well as printed products, boxes, etc.

3. Machine description

Semi-automatic plastic strapping machine for use with polypropylene strapping

Heavy duty construction

Simple, safe and user-friendly operation

Moveable, with large table area high capacity strap reel and stainless steel table

Two locking castors, to ensure safe operation

Extremely low noise sealing unit

Strap tension adjustable from low to extremely high with infinitely variable strap feed.

4. Description of the safety devices

The machine is ready to operate when connected to the main power supply and the main switch QS1 is switched to ON position. It takes approximately 1 minute for the heating element to reach its operating temperature.

The machine is switched on and off with the main switch QS1 located on the machine front operating panel.

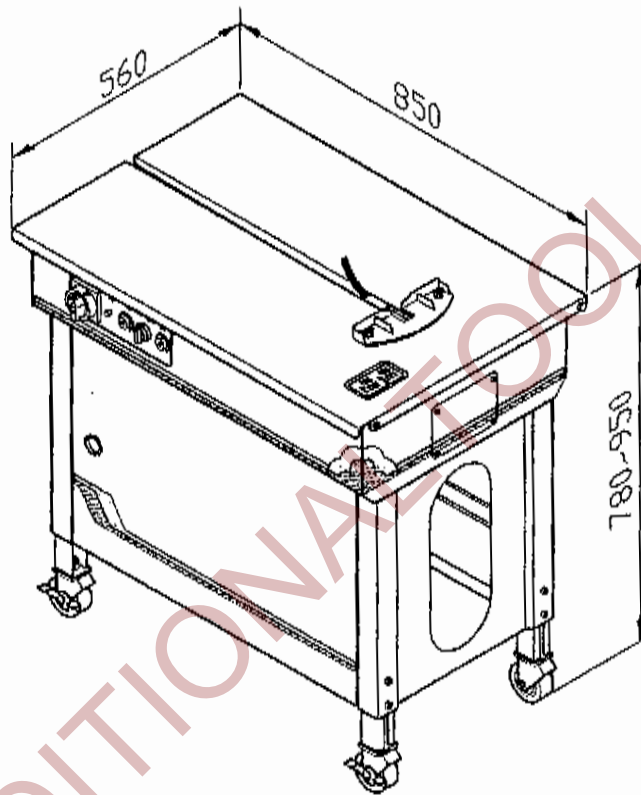
5. Basic specifications

System configuration:	1L+N+PE	1L+N+PE
Nominal power:	0.5KW	0.5KW
Rated current:	2A	3A
Rated voltage:	230V	120V
Rated frequency:	50Hz	60Hz
Type of current:	AC	AC

6. Minimum requirements

- 1) The machine must only be operated in dry rooms.
- 2) The electrical supply line for the machine must have a minimum cross-section of at least 3x1.0mm².

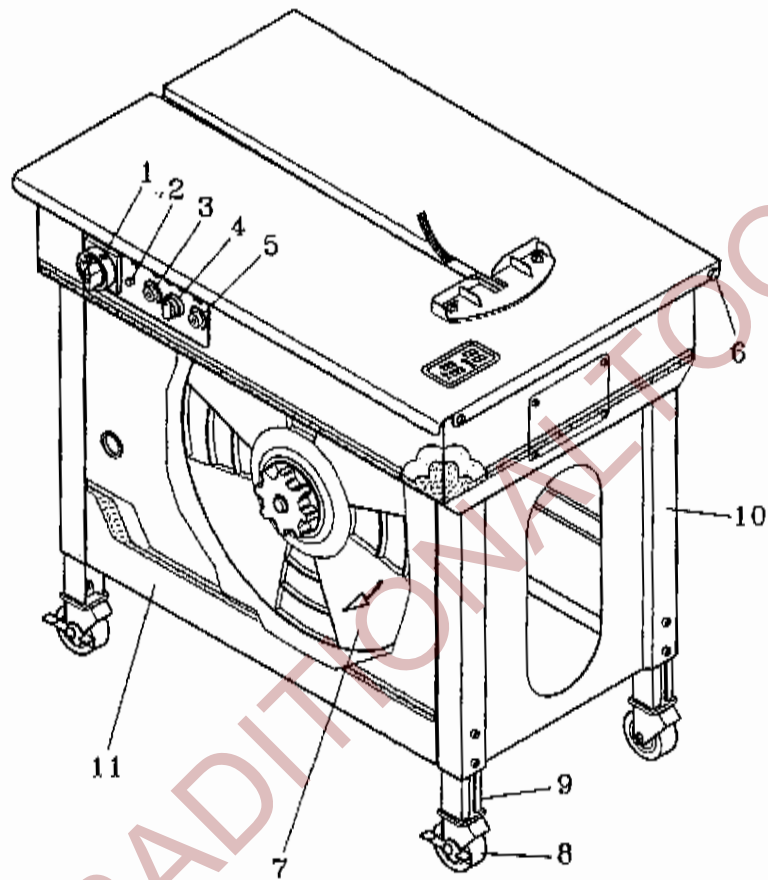
7. Technical data



TP-501(Enclosed Frame)

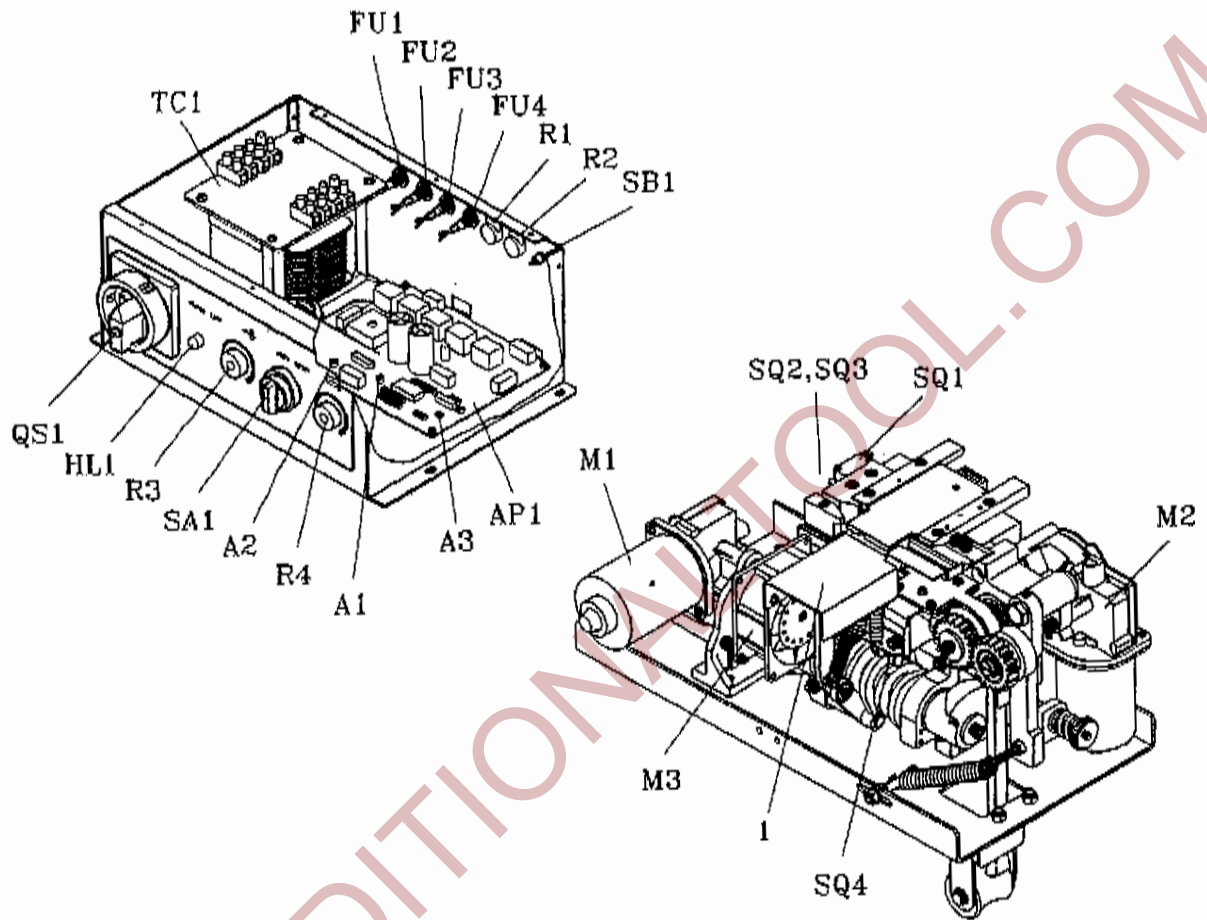
Sealing method:	Heat
Strap width:	5 mm up to 12 mm
Strap reel diameter:	200 mm / 230 mm / 280 mm
Width:	850 mm
Depth:	560 mm
Height:	minimum 780 mm maximum 950 mm
Electrical connection:	AC 120V 60Hz, Single phase
Weight:	76kg
Noise emission:	55dB (A)

8. Machine and operating elements



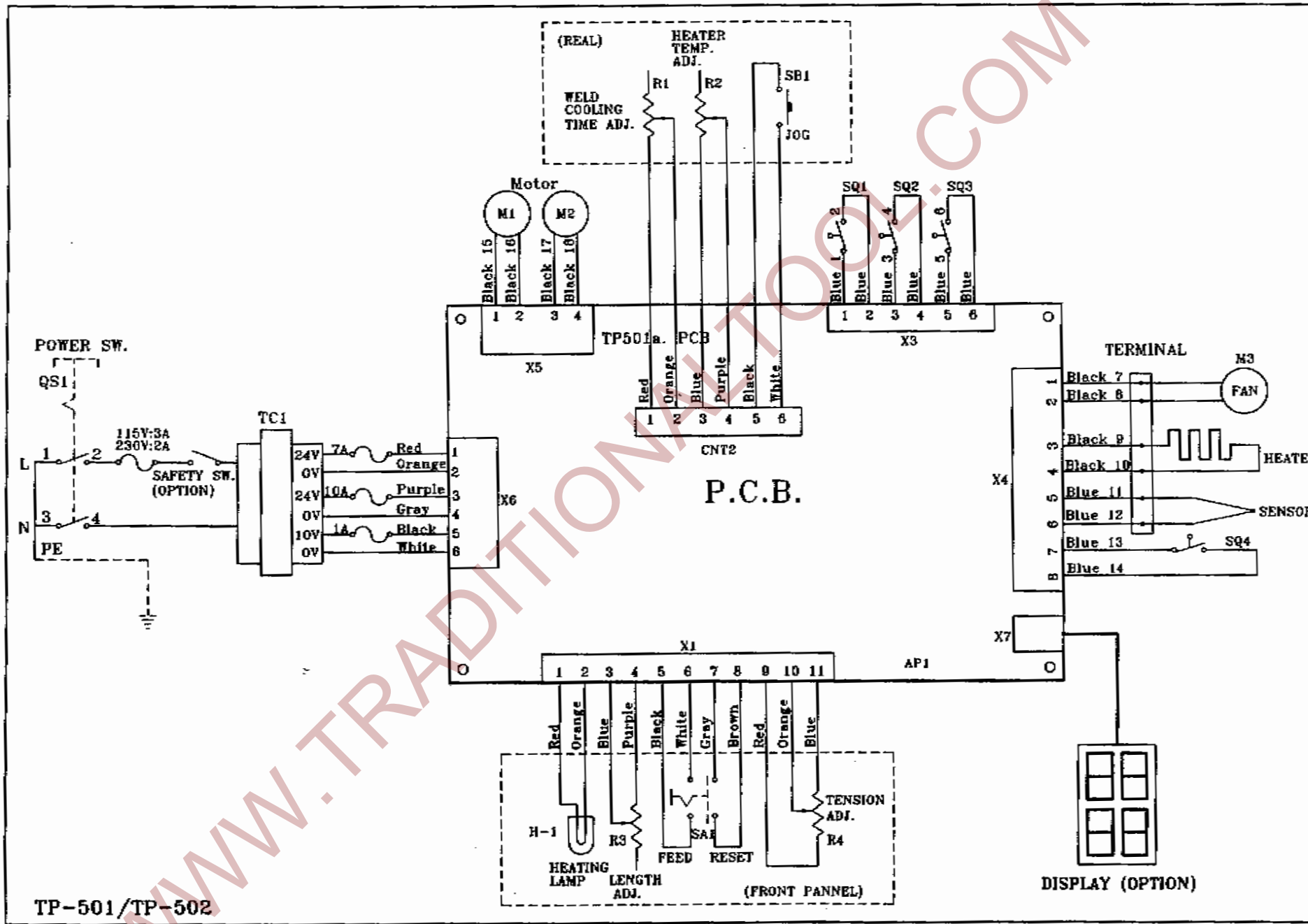
1. Main switch
2. Heater lamp, lamp will light on when proper sealing temperature is reached
3. Potentiometer, strap feed length
4. Button, strap feed and reset
5. Potentiometer, strap tension adjustment
6. Table top, hinge
7. Strap reel
8. Castor, two lockable
9. Adjustable legs
10. Frame
11. Door

9. Installation diagram



QS1	Main switch	A3	Heater temperature knob
HL1	Heater lamp	M1	Motor 1, unit drive
R3	Strap feed length	SQ1	Switch, start
SA1	Button, strap feed and reset	SQ2	Switch, home position
R4	Strap tension adjustment	SQ3	Switch, sealing position
AP1	P.C.B. Unit control	SQ4	Switch, low tension (under 15 kgs)
TC1	Transformer	M2	Motor 2, strap feed and reverse
FU1	Fuse 120V/3A, 230V/2A (For power)	1	Heating unit
FU2	Fuse 1A (For P.C.B.)	M3	Fan
FU3	Fuse 10A (For Motor)		
FU4	Fuse 7A (For Heater)		
R1	Weld cooling timer		
R2	Heater temperature adjustment		
SB1	Jog switch		
A1	High tension knob		

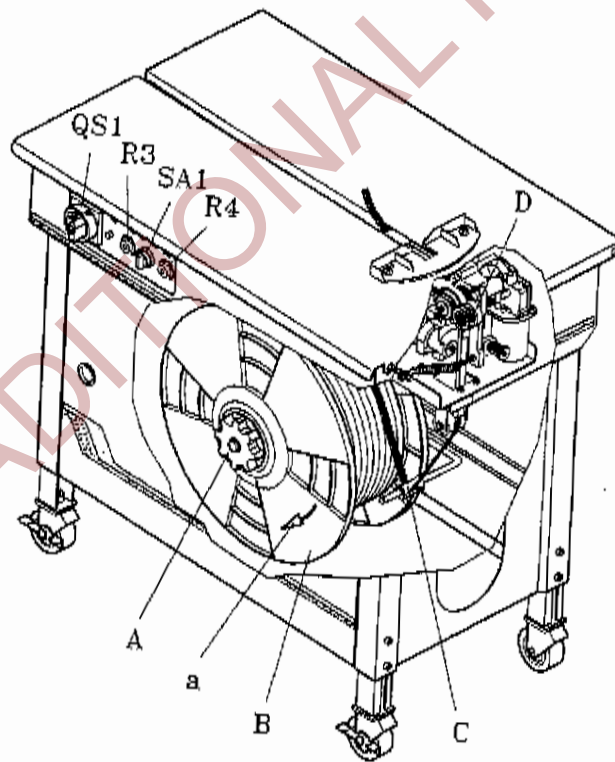
10. Wiring diagram



11. Start-up and functioning sequence

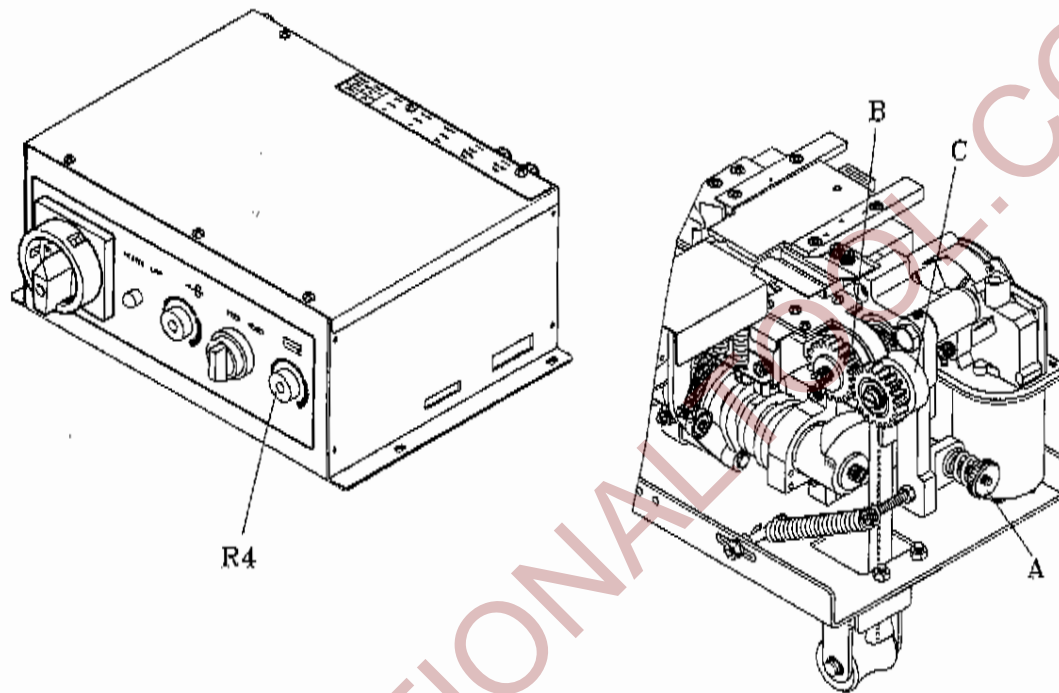
- a) Put strap on the strap reel and thread the strap.
- b) Turn main switch QS1 to ON. The heating element reaches the working temperature in approximately 1 minute.
- c) Use potentiometer R3 to adjust the strap length.
- d) Place the strap around the package to be strapped and insert the strap into the strapping head until it stops.
- e) The strapping and welding sequence should complete.
- f) At end of strapping sequence the strap end is fed automatically.
- g) R4 adjusts the strap tension.

12. Threading diagram



- a) Turn reel nut handle (A) left and remove it.
- b) Remove the cover of the reel (B) and install the strap reel.
- c) Make sure that the rotation is counterclockwise (a) when unrolling.
- d) Put the reel cover back on and tighten reel nut handle (A) to the right.
- e) Remove all adhesive strips or other adhesive material.
- f) Unroll about 1.5 m strap and make sure that it is not twisted.
- g) Thread the strap in direction of arrow over (C) to roller (D).
- h) Turn left button (SA1) until the length you need

13. Strap tension adjustment



Adjustment:

The specified measures are designated for factory presetting which results in medium strap tension.

If R4 (strap tension adjustment) is on MAX position make sure that A is turned clockwise until the strap is not sliding between rollers B and C.

Reverse action to achieve lower strap tension.

14. Maintenance and lubrication

Maintenance:

To ensure that the semi-automatic strapping machine is always ready for proper and reliable operation keep to regular and attentive maintenance.

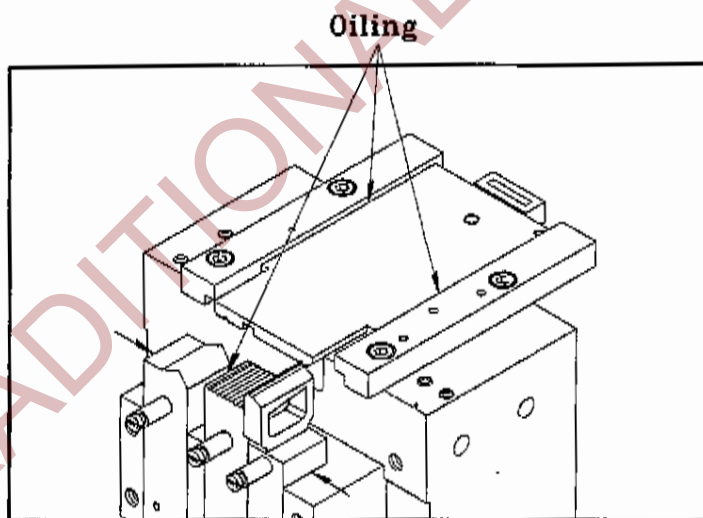
Keep the machine clean and take care particularly of the strap guides.

All small particles of loose strap should always be removed from all parts of the machine. In addition to the strap guides, the strap feed devices of the unit, the top of the dies and the feed devices on the strap magazine have to be blown free of any dust at least once per week.

Lubrication:

The dies on the unit have to be lightly lubricated weekly.

15. Maintenance of the unit



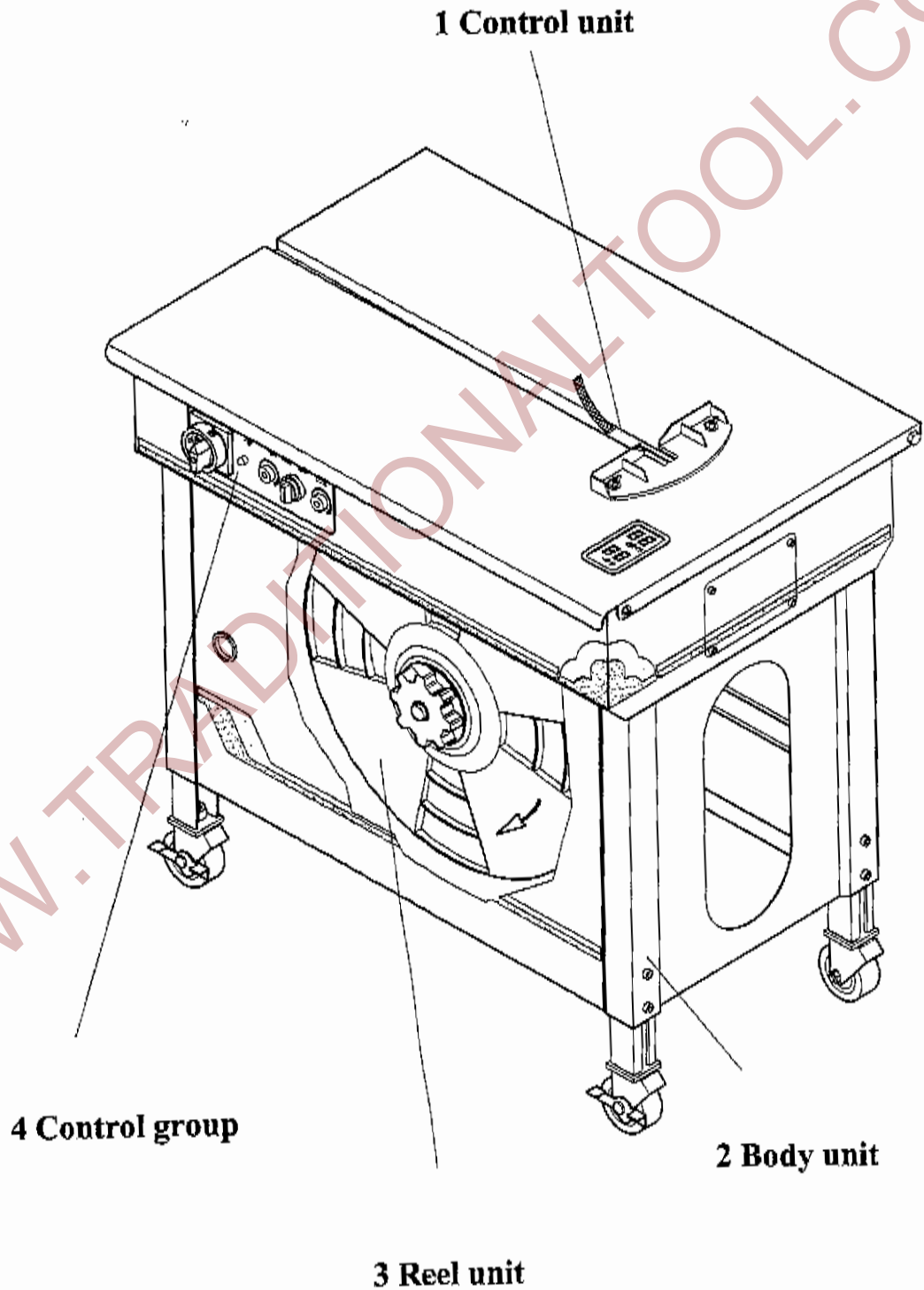
Lubricate the marked points weekly. Use only resin-free brandname oil for lubrication. All other assemblies are maintenance free. The strap guides and the sealing unit have to be kept clean! Do not oil feedrollers.

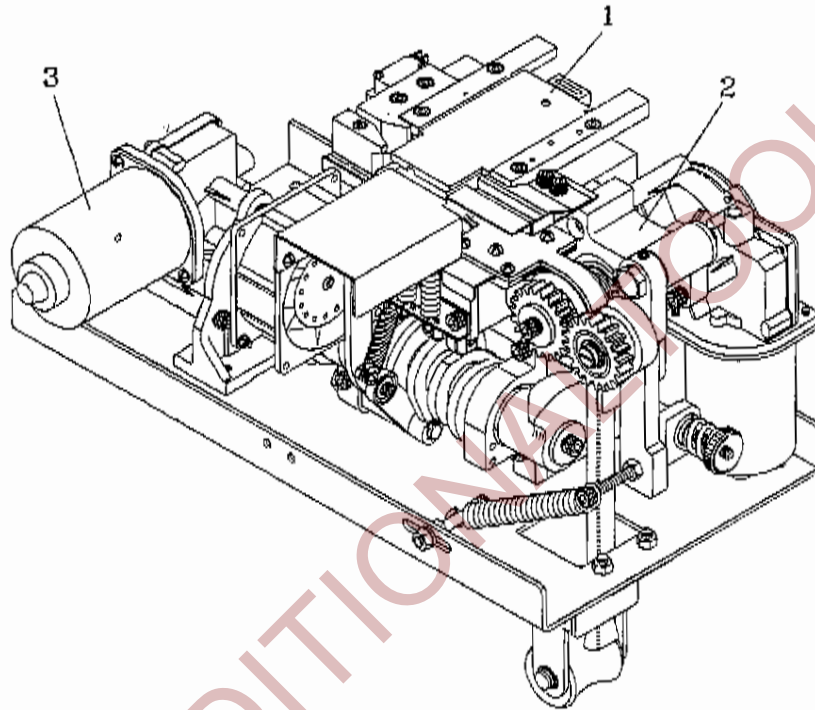
Note: Any other servicing shall be performed by an authorized service representative.

CONTENTS

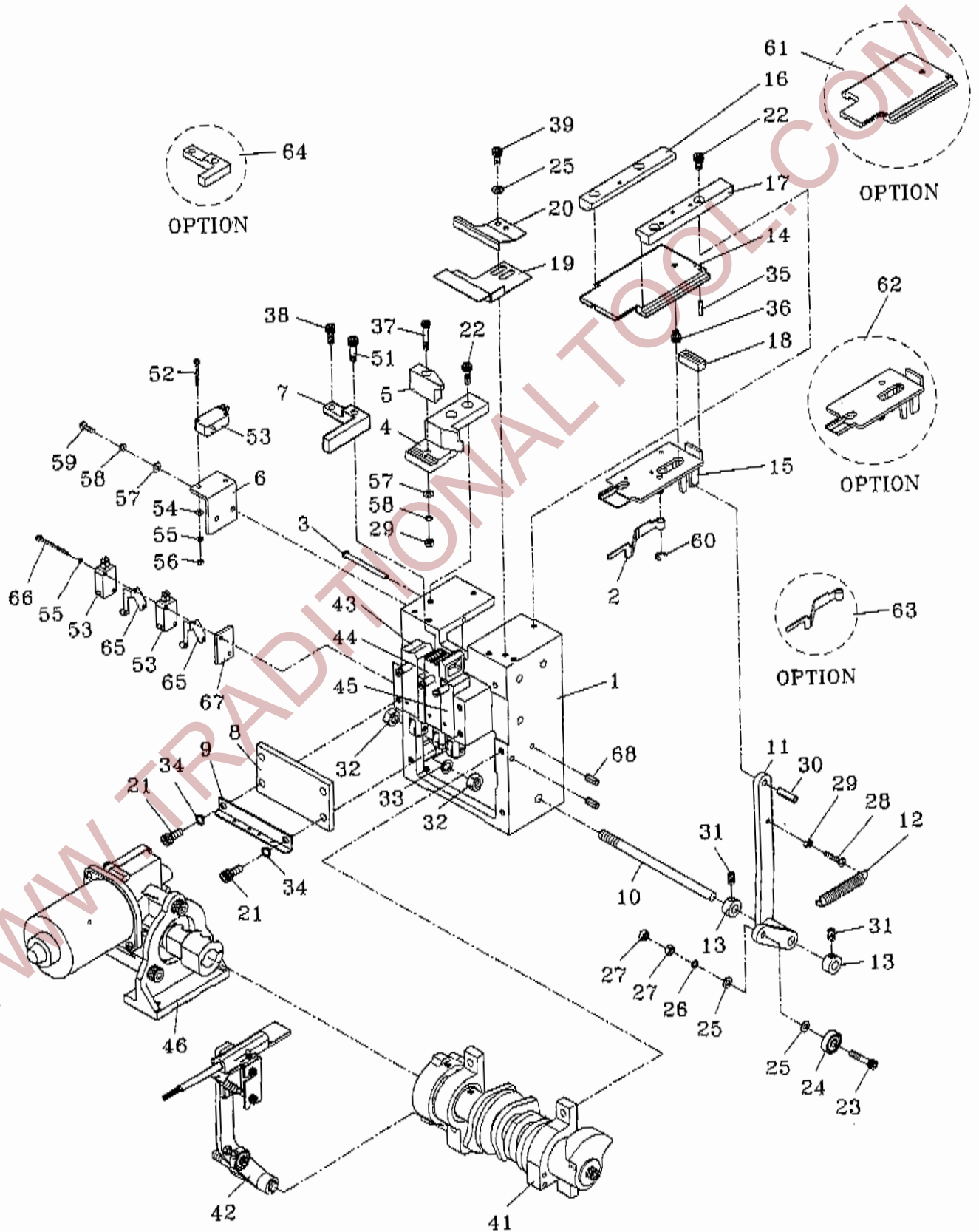
(1) CONTROL UNIT	1-17
(2) BODY UNIT	18-21
(3) REEL UNIT	22-24
(4) CONTROL GROUP	25-28

STRUCTURE AND UNITS





REF. NO.	PARTS NO.	DESCRIPTION	Q'TY	REMARKS
1	T5-1-10000	Control Head Group	1	SEE PAGE 2
2	T5-1-20000	Feed Group	1	SEE PAGE 10
3	T5-1-30000	Transmission Group	1	SEE PAGE 17



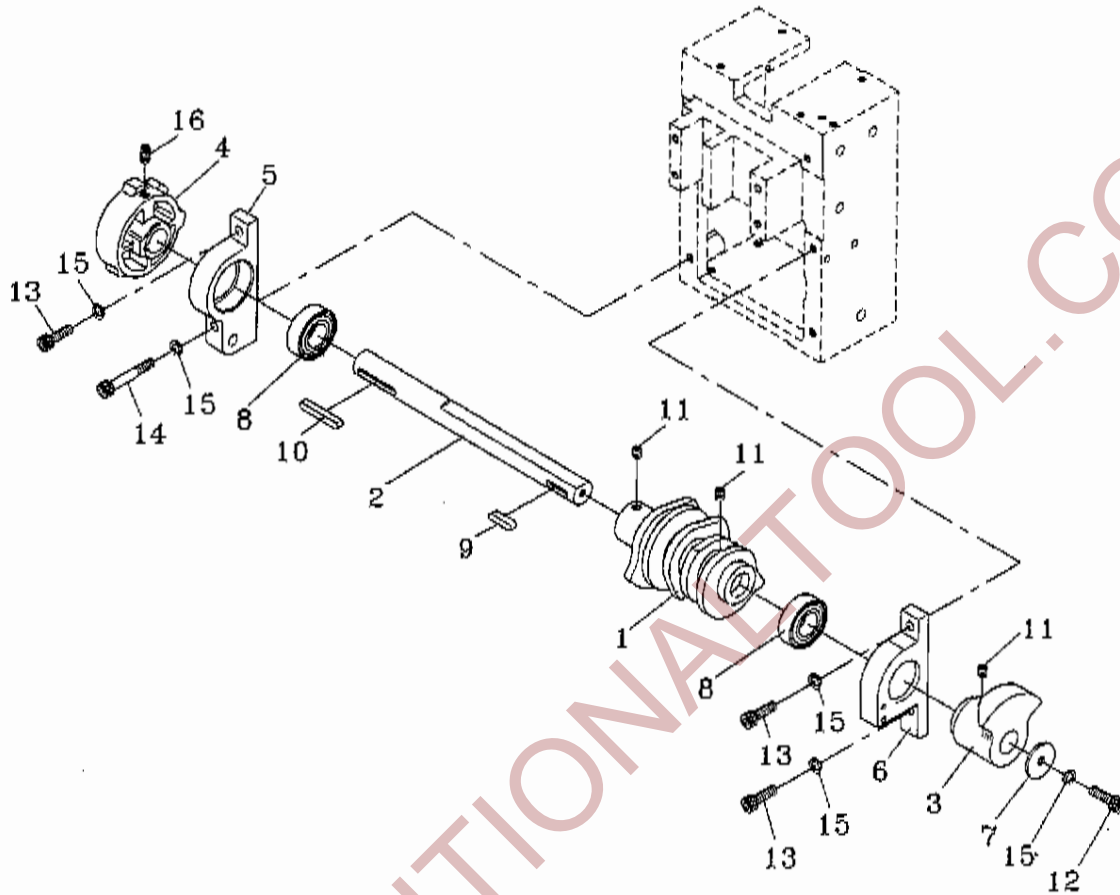
REF. NO.	PARTS NO.	DESCRIPTION	Q'TY	REMARKS
1	T5-1-10110	Main Body Block	1	
2	T5-1-10120	Switch Lever	1	
3	T5-1-10130	Switch Pin	1	
4	T5-1-10140	Strap Guide (A)	1	
5	T5-1-10150	Strap Guide (B)	1	
6	T5-1-10160	Switch Bracket	1	
7	TA-239	Cutter Holder	1	
8	TA-067	Bar Guide Lid	1	
9	TA-072	Spring Hook	1	
10	TA-094	Shaft	1	
11	TA-090	Arm	1	
12	TB-114	Return Spring	1	
13	TA-229	Collar	2	
14	TA-080	Slide	1	
15	T5-1-10250	Separator	1	
16	TA-095	Guide (L)	1	
17	TA-226	Guide (R)	1	
18	TA-236	Gum	1	
19	TB-208	Front Plate	1	
20	TB-197	Guide Front	1	
21	TA-068	HBS, M6x16	4	
22	TA-096	HBS, M5x12	6	
23	TA-092	HBS, M5x25	1	
24	TA-076	Bearing 635ZZ	1	
25	TB-180	PW, M5	4	
26	TC-055	SW, M5	1	
27	T6-1-63029	HN, M5	2	
28	TA-093	PMS, M4x20	1	
29	TC-082	HN, M4	2	
30	TA-091	Spring Pin, 6x20	1	
31	TA-013	HSS, M6x6	2	
32	TA-085	HN, M8	2	
33	TC-059	SW, M8	1	
34	TC-058	SW, M6	4	
36	TA-081	HBS, M5x5	1	
37	TC-081	HBS, M4x25	1	
38	TA-240	HBS, M5x16	1	
39	TB-198	HBS, M5x10	2	
41	T5-1-11000	Cam Group	1	SEE PAGE 5
42	T5-1-12000	Heater Ass'y	1	SEE PAGE 6
43	T5-1-13000	Rear Bar Ass'y	1	SEE PAGE 7
44	T5-1-14000	Press Bar Ass'y	1	SEE PAGE 8
45	T5-1-15000	Front Bar Ass'y	1	SEE PAGE 9
46	T5-1-30000	Transmission Group	1	SEE PAGE 17

REF. NO.	PARTS NO.	DESCRIPTION	Q'TY	REMARKS
51	TA-092	HBS, M5x25	1	
52	T5-1-10620	PMS, M3x20	2	
53	TF-006	Micro Switch	3	
54	T6-3-10290	PW, M3	2	
55	TF-064	SW, M3	4	
56	TF-069	HN, M3	2	
57	TC-084	PW, M4	3	
58	TF-063	SW, M4	3	
59	T6-1-20400	PMS, M4x12	2	
60	TA-238	Snap Ring E3	1	
61	T5-1-10710	Slide (For Small Package)	1	
62	T5-1-10720	Separator (For Small Package)	1	
63	T5-1-10730	Switch Lever (For Small Package)	1	
64	T5-1-10740	Cutter Holder (For Small Package)	1	
65	TF-009	Switch Trigger	2	
66	T5-1-10760	PMS, M3x35	2	
67	T5-1-10770	Plate	1	
68	T5-1-10780	Spring Pin, 5x12	2	

1-1-1

CAM GROUP

T5-1-11000



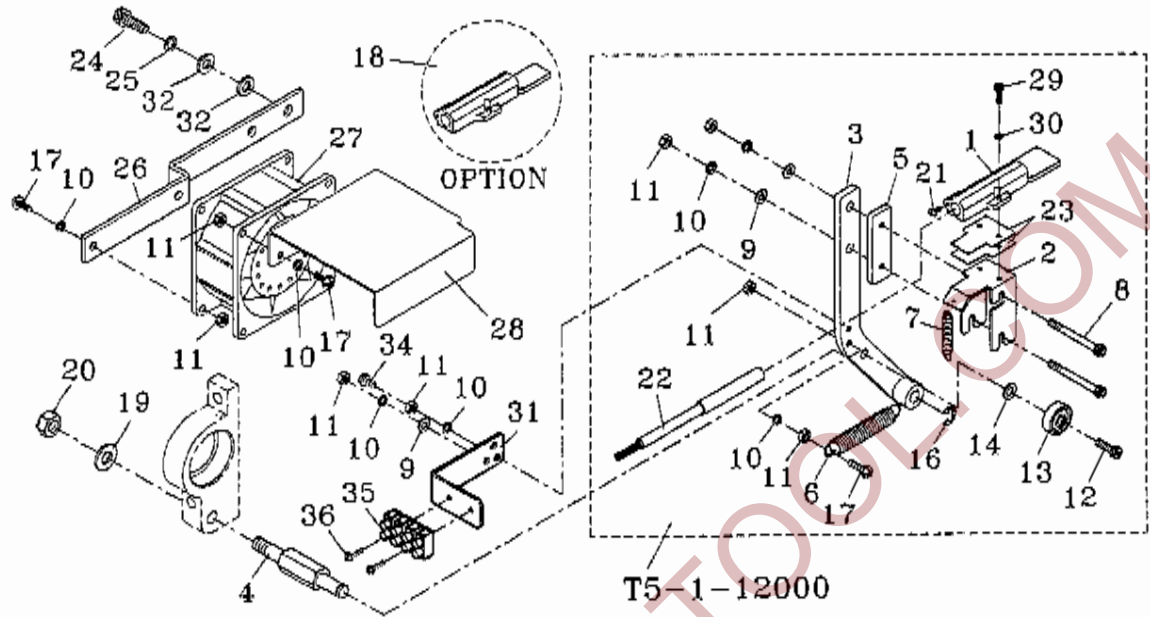
REF. NO.	PARTS NO.	DESCRIPTION	QTY	REMARKS
1	T5-1-11110	Cam Ass'y	1	
2	T5-1-11120	Cam Shaft	1	
3	T5-1-11130	Tension Cam	1	
4	T5-1-11140	Limit Switch Contactor	1	
5	TA-008	Bearing Support (L)	1	
6	TA-017	Bearing Support (R)	1	
7	TB-223	Washer	1	
8	TA-011	Ball Bearing, 6003ZZ	2	
9	TA-036	Key 5x5x20	1	
10	T5-1-11200	Key 5x5x35	1	
11	TA-013	HSS, M6x6	3	
12	TA-068	HBS, M6x16	1	
13	TE-055	HBS, M6x20	3	
14	T6-1-71610	HBS, M6x45	1	
15	TC-058	SW, M6	5	
16	T6-1-40610	HSS, M6x10	1	

For Parts & Service 1-877-862-6699

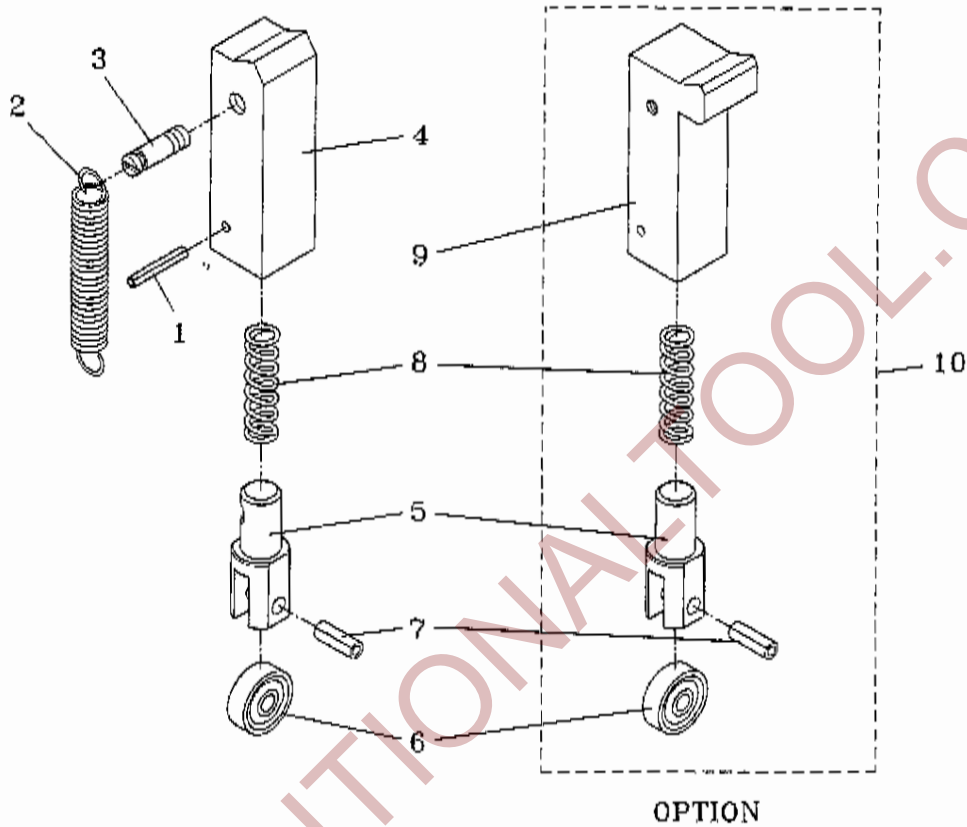
1-1-2

HEATER ASS'Y

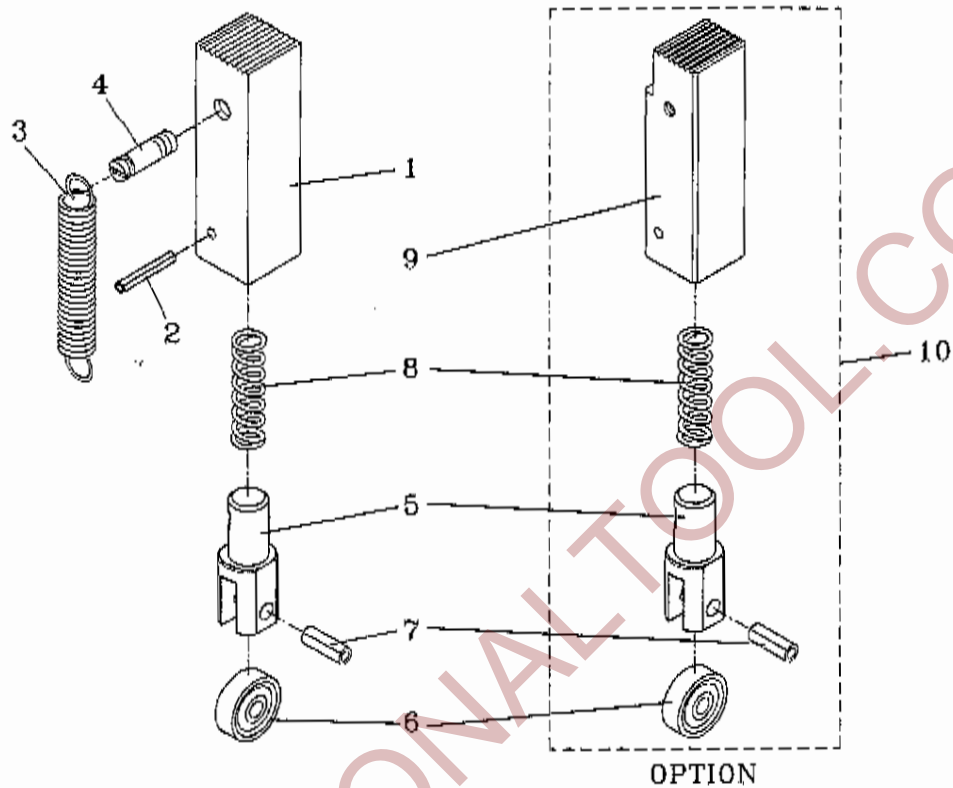
T5-1-12000



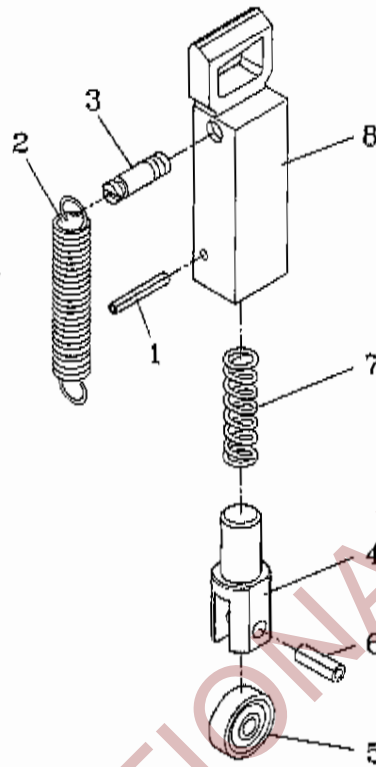
REF. NO.	PARTS NO.	DESCRIPTION	QTY	REMARKS
1	T5-1-12110	Heater Tongue	1	
2	T5-1-12120	Heater Bracket	1	
3	TB-102	Heater Arm	1	
4	TB-103	Pin	1	
5	TB-107	Side Plate	1	
6	TB-114	Return Spring	1	
7	TB-115	Spring	1	
8	T5-1-12180	HBS, M4x40 (SUS)	2	
9	T5-1-12190	PW, M4 (SUS)	3	
10	T5-1-12200	SW, M4 (SUS)	9	
11	T5-1-12210	HN, M4 (SUS)	10	
12	TA-240	HBS, M5x16	1	
13	TA-076	Bearing, 635ZZ	1	
14	TB-180	PW, M5	1	
15	T6-1-63029	HN, M5	1	
16	TB-105	Snap Ring E6	1	
17	T6-1-20400	PMS, M4x12	5	
18	T5-1-12280	Heater Tongue (For Small Package)	1	
19	T6-1-10650	PW, M8	1	
20	TA-085	HN, M8	1	
21	T5-1-12310	TMS, M3x6 (SUS)	1	
22	T5-1-12320	Heater	1	
23	T5-1-12330	Heat-Insulation	2	
24	TA-068	HBS, M6x16	2	
25	TC-058	SW, M6	2	
26	T5-1-12360	Fan Support	1	
27	T5-1-12370	Fan	1	
28	T5-1-12380	Fan Cover	1	
29	T5-1-12390	HBS, M3x8 (SUS)	1	
30	T5-1-12400	SW, M3 (SUS)	1	
31	T5-1-12410	Terminal Bracket	1	
32	TC-056	PW, M6	2	
34	T6-1-63032	PMS, M4x8	1	
35	T5-1-12450	Heater Terminal	1	
36	T5-1-12460	PMS, M5x10	2	



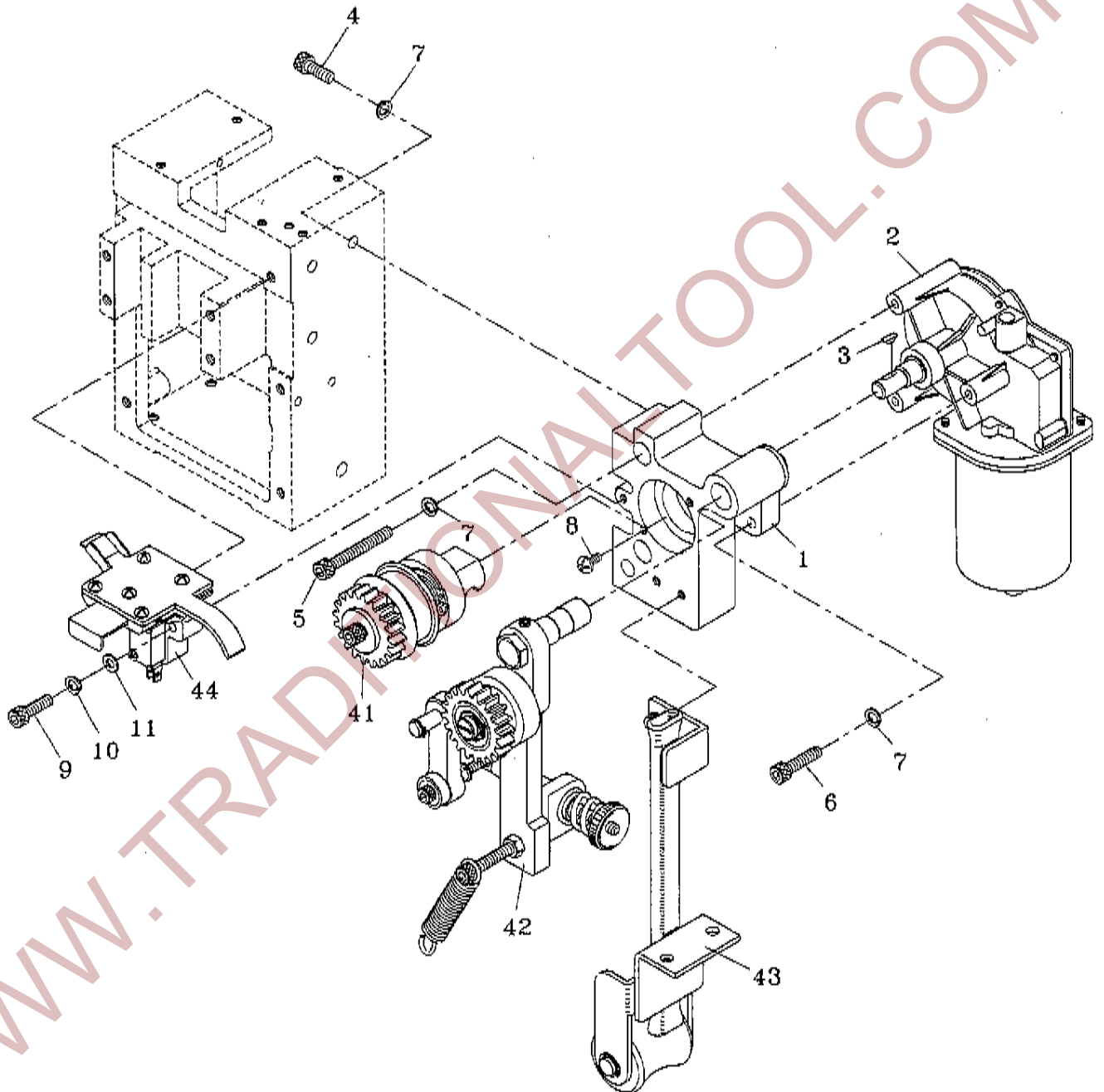
REF. NO.	PARTS NO.	DESCRIPTION	Q'TY	REMARKS
1	TA-070	Spring Pin, 3x18	1	
2	TA-071	Return Spring	1	
3	TA-073	Spring Hook	1	
4	TA-074	Rear Bar	1	
5	TA-075	Plunger	1	
6	TA-076	Bearing, 635ZZ	1	
7	TA-077	Spring Pin, 5x14	1	
8	TA-078	Spring	1	
9	T5-1-13190	Rear Bar (For Small Package)	1	
10	T5-1-13200	Rear Bar Ass'y (For Small Package)	1	



REF. NO.	PARTS NO.	DESCRIPTION	Q'TY	REMARKS
1	TA-069	Press Bar	1	
2	TA-070	Spring Pin, 3x18	1	
3	TA-071	Return Spring	1	
4	TA-073	Spring Hook	1	
5	TA-075	Plunger	1	
6	TA-076	Bearing, 635ZZ	1	
7	TA-077	Spring Pin, 5x14	1	
8	TA-078	Spring	1	
9	T5-1-14190	Press Bar (For Small Package)	1	
10	T5-1-14200	Press Bar Ass'y (For Small Package)	1	

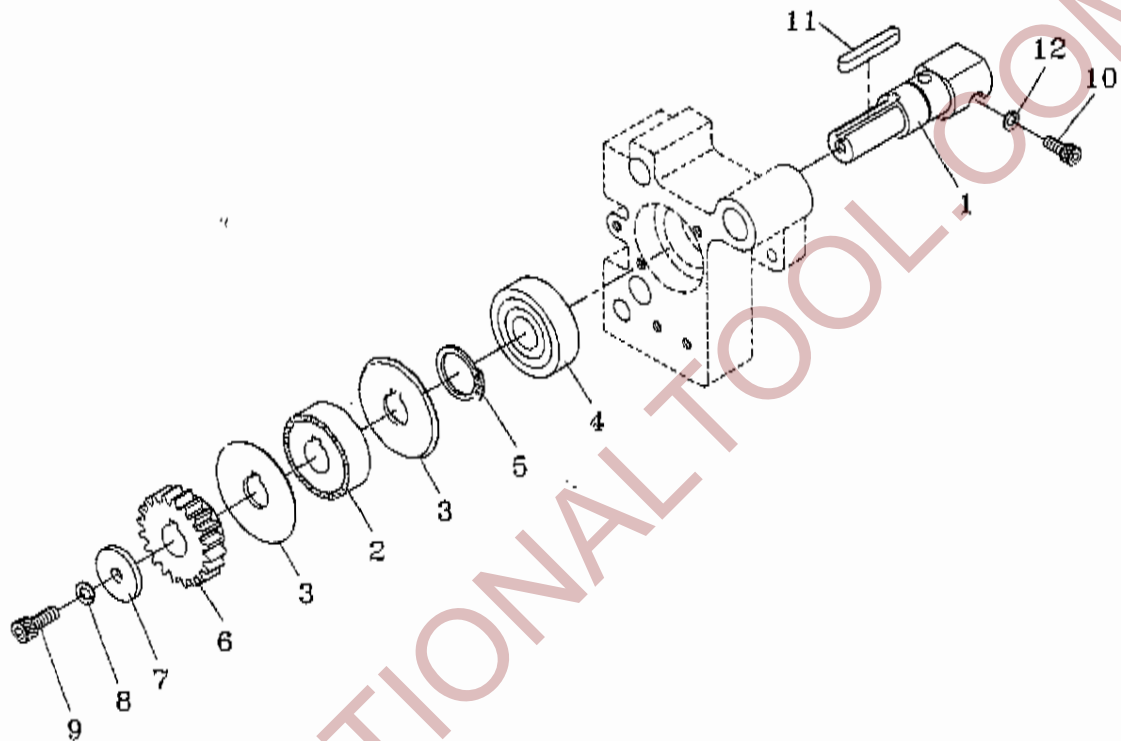


REF. NO.	PARTS NO.	DESCRIPTION	Q'TY	REMARKS
1	TA-070	Spring Pin, 3x18	1	
2	TA-071	Return Spring	1	
3	TA-073	Spring Hook	1	
4	TA-075	Plunger	1	
5	TA-076	Bearing, 635ZZ	1	
6	TA-077	Spring Pin, 5x14	1	
7	TA-078	Spring	1	
8	TA-079	Front Bar	1	



WWW.TRADITIONALTOOL.COM

REF. NO.	PARTS NO.	DESCRIPTION	Q'TY	REMARKS
1	T5-1-20110	Bracket	1	
2	T5-1-20120	Motor (M2)	1	
3	T5-1-20130	Key, 3x10	1	
4	TE-055	HBS, M6x20	3	
5	T6-1-20630	HBS, M6x50	2	
6	T6-3-11610	HBS, M6x35	1	
7	TC-058	SW, M6	6	
8	T5-1-20180	TMS, M5x10	2	
9	TA-092	HBS, M5x25	2	
10	TC-055	SW, M5	2	
11	TB-180	PW, M5	1	
41	T5-1-21000	Main Roller Ass'y	1	SEE PAGE 12
42	T5-1-22000	Roller Arm Ass'y	1	SEE PAGE 13
43	T5-1-23000	Feed Shooter Ass'y	1	SEE PAGE 15
44	T5-1-24000	Strap Guide Ass'y	1	SEE PAGE 16

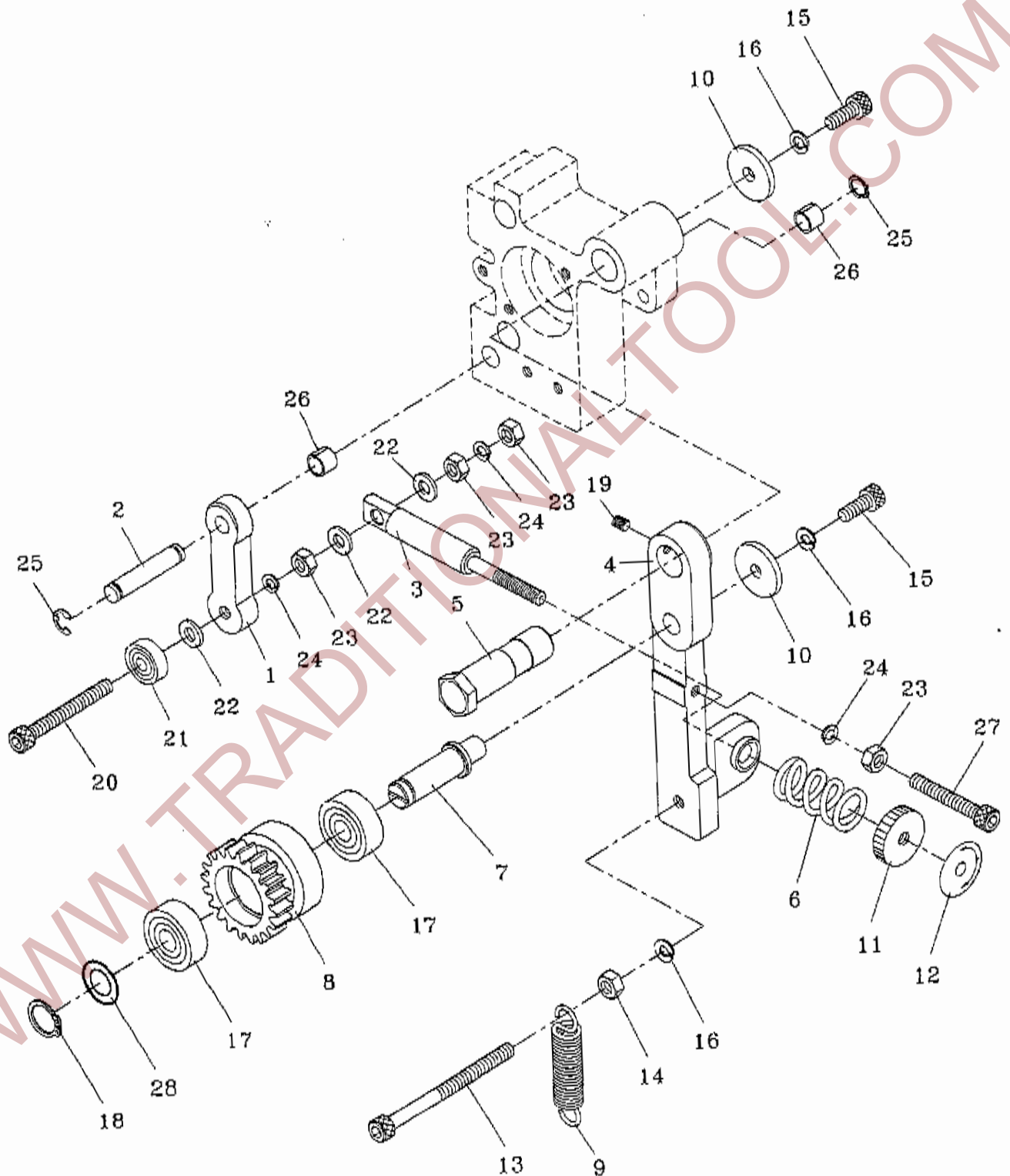


REF. NO.	PARTS NO.	DESCRIPTION	QTY	REMARKS
1	T5-1-21110	Main Roller Shaft	1	
2	T5-1-21120	Main Roller	1	
3	T5-1-21130	Side Plate	2	
4	T5-1-21140	Bearing, 6004ZZ	1	
5	TC-065	Stop Ring, S-20	1	
6	T5-1-21160	Gear	1	
7	TB-223	Washer	1	
8	TC-058	SW, M6	1	
9	TA-068	HBS, M6x16	1	
10	TA-240	HBS, M5x16	1	
11	T5-1-11200	Key 5x5x35	1	
12	TC-055	SW, M5	1	

1-2-2

ROLLER ARM ASS'Y

T5-1-22000

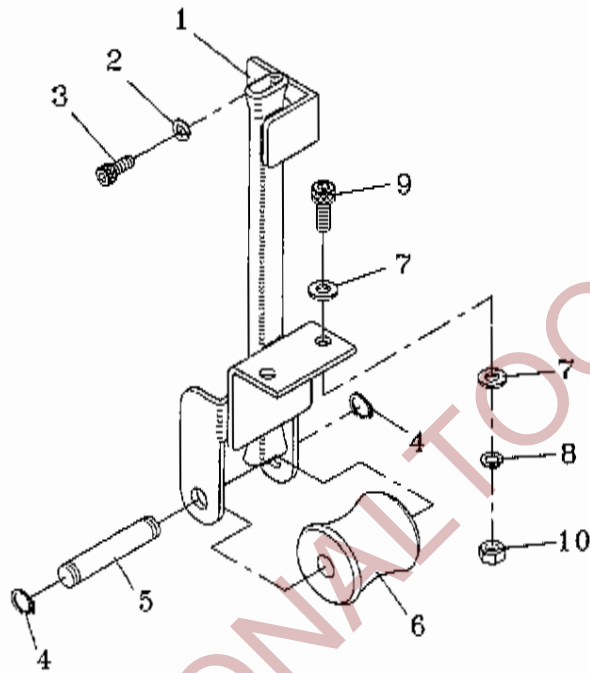


1-2-2

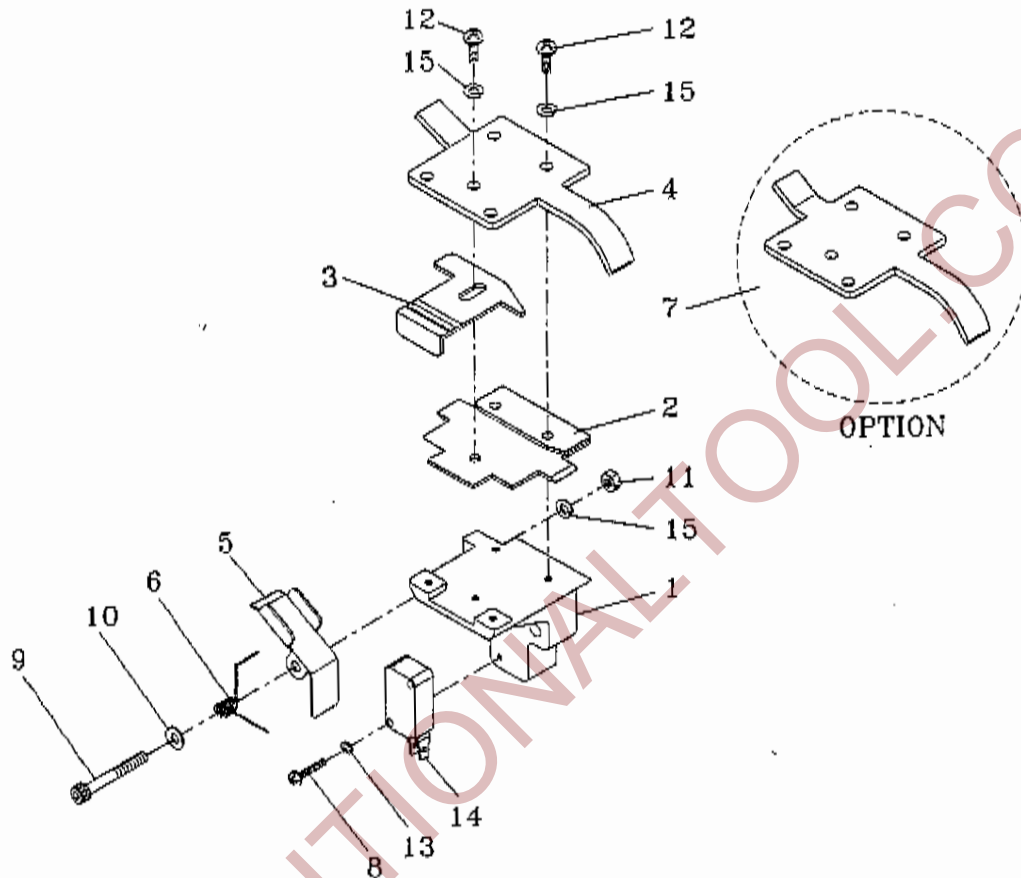
ROLLER ARM ASS'Y

T5-1-22000

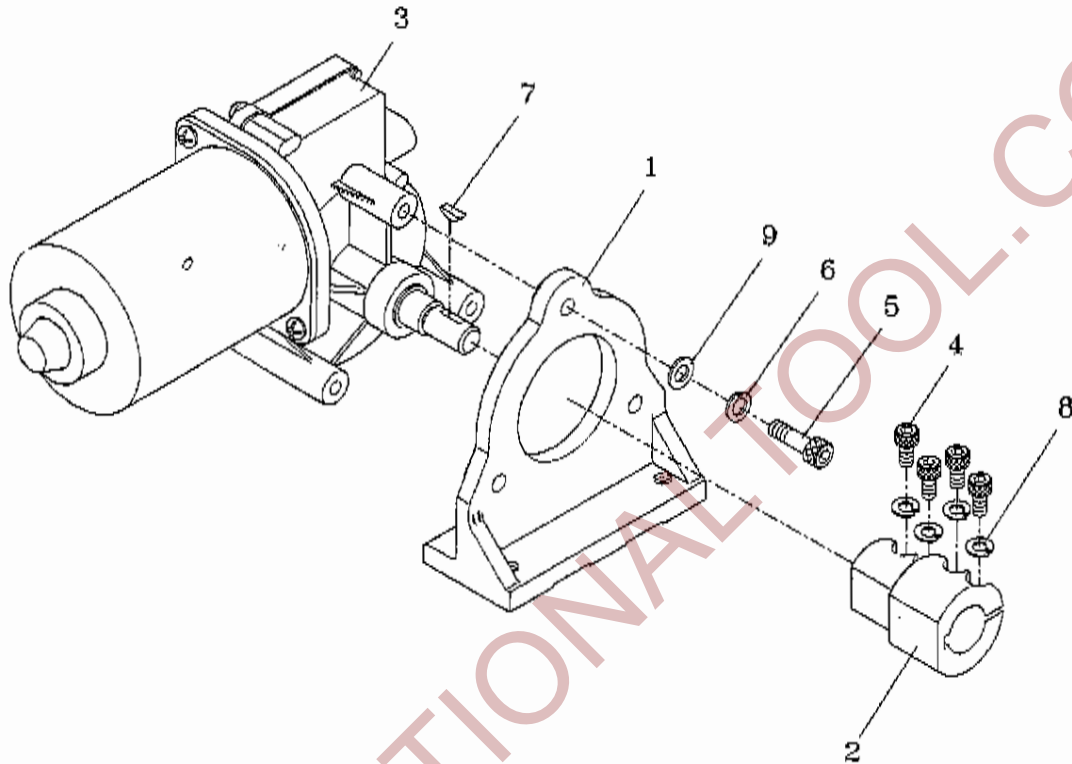
REF. NO.	PARTS NO.	DESCRIPTION	Q'TY	REMARKS
1	T5-1-22110	Tension Arm	1	
2	T5-1-22120	Shaft	1	
3	T5-1-22130	Connect Rod	1	
4	T5-1-22140	Roller Arm	1	
5	T5-1-22150	Shaft	1	
6	T5-1-22160	Spring	1	
7	T5-1-22170	Roller Shaft	1	
8	T5-1-22180	Roller	1	
9	TC-025	Feed Spring	1	
10	TB-223	Washer	2	
11	TB-133	Nut	1	
12	T5-1-22220	Name Plate	1	
13	T5-1-22230	HBS, M6x75	1	
14	TC-062	HN, M6	1	
15	TA-068	HBS, M6x16	2	
16	TC-058	SW, M6	3	
17	T5-1-22270	Bearing, 6001ZZ	2	
18	TB-140	Snap Ring S12	1	
19	T5-1-22290	HSS, M5x5	1	
20	T5-1-22300	HBS, M5x40	1	
21	TA-076	Bearing, 635ZZ	1	
22	TB-180	PW, M5	3	
23	T6-1-63029	HN, M5	4	
24	TC-055	SW, M5	3	
25	TB-105	Snap Ring E6	2	
26	T6-1-62130	Metal Bush 0808	2	
27	T5-1-22370	HBS, M5x30	1	
28	T5-1-22380	Seam	1	



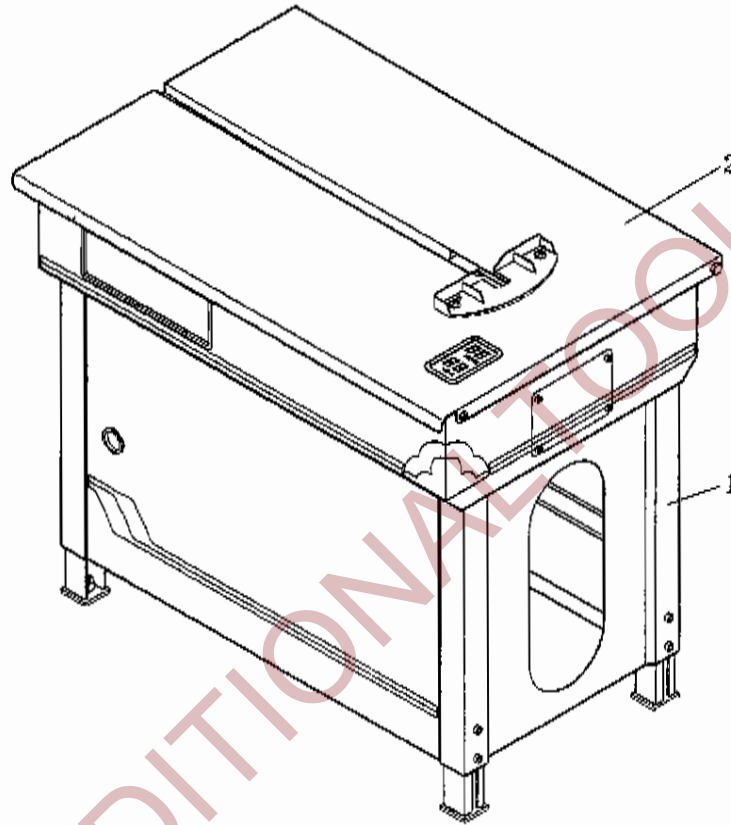
REF. NO.	PARTS NO.	DESCRIPTION	Q'TY	REMARKS
1	T5-1-23110	Feed Shooter	1	
2	TC-055	SW, M5	2	
3	TA-240	HBS, M5x16	2	
4	TC-066	Ring, S10	2	
5	TC-048	Shaft	1	
6	TC-049	Roller	1	
7	TC-056	PW, M6	4	
8	TC-058	SW, M6	2	
9	TA-068	HBS, M6x16	2	
10	TC-062	HN, M6	2	



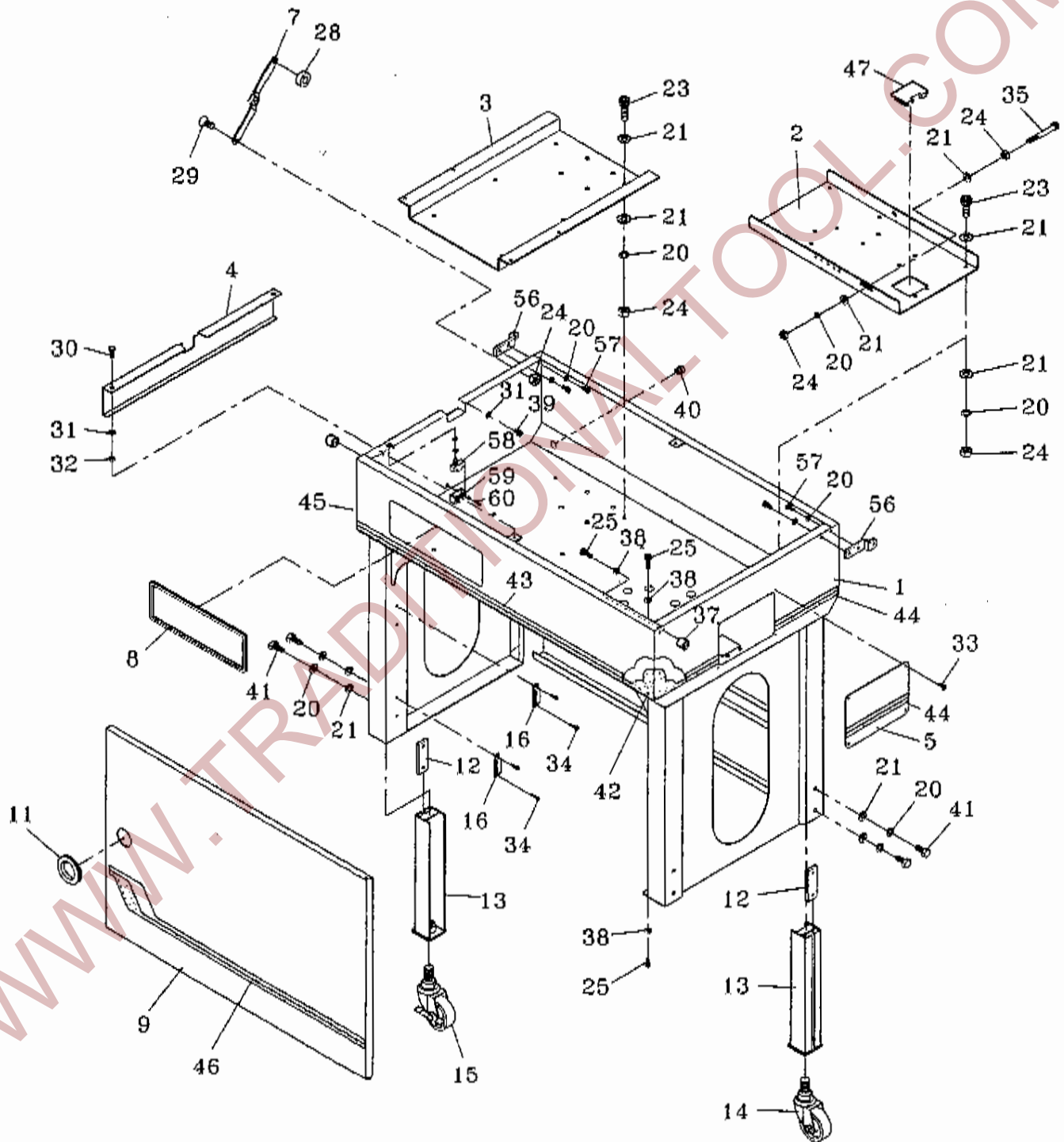
REF. NO.	PARTS NO.	DESCRIPTION	Q'TY	REMARKS
1	T5-1-24110	Strap Guide Support	1	
2	T5-1-24120	Strap Guide (A)	1	
3	T5-1-24130	Strap Guide (B)	1	
4	T5-1-24140	Strap Guide Cover (For 8-12mm)	1	
5	T5-1-24150	Strap Guide (C)	1	
6	T5-1-24160	Spring	1	
7	T5-1-24170	Strap Guide Cover (For 5-7mm)	1	
8	TF-059	PMS, M3x15	2	
9	T5-1-24190	HBS, M4x40	1	
10	TC-084	PW, M4	1	
11	TC-082	HN, M4	1	
12	T6-1-20400	PMS, M4x12	5	
13	TF-064	SW, M3	2	
14	TF-006	Micro Switch	1	
15	TF-063	SW, M4	6	



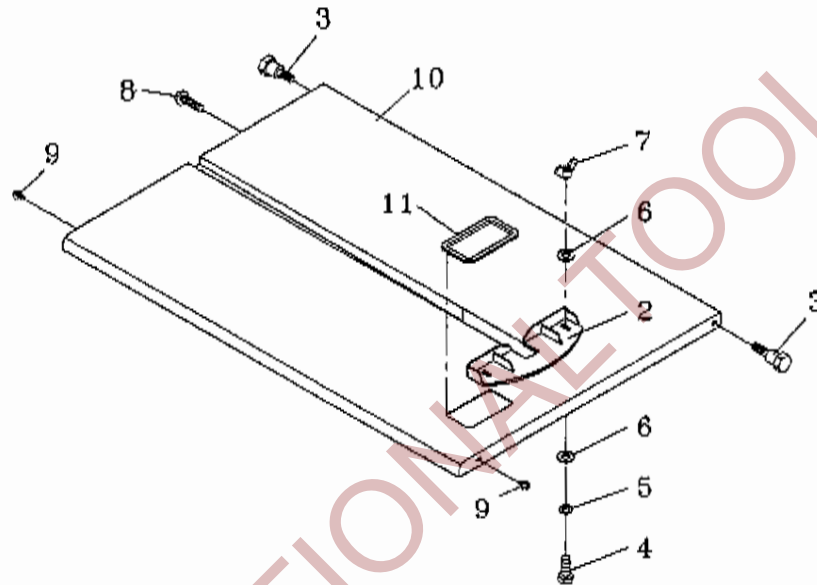
REF. NO.	PARTS NO.	DESCRIPTION	Q'TY	REMARKS
1	T5-1-30110	Main Motor Support	1	
2	T5-1-30120	Shaft Coupling	1	
3	T5-1-30130	Main Motor (M1)	1	
4	TA-240	HBS, M5x16	4	
5	T6-1-63020	HBS, M6x25	3	
6	TC-058	SW, M6	3	
7	T5-1-20130	Key, 3x10	1	
8	TC-055	SW, M5	4	
9	TC-056	PW, M6	3	



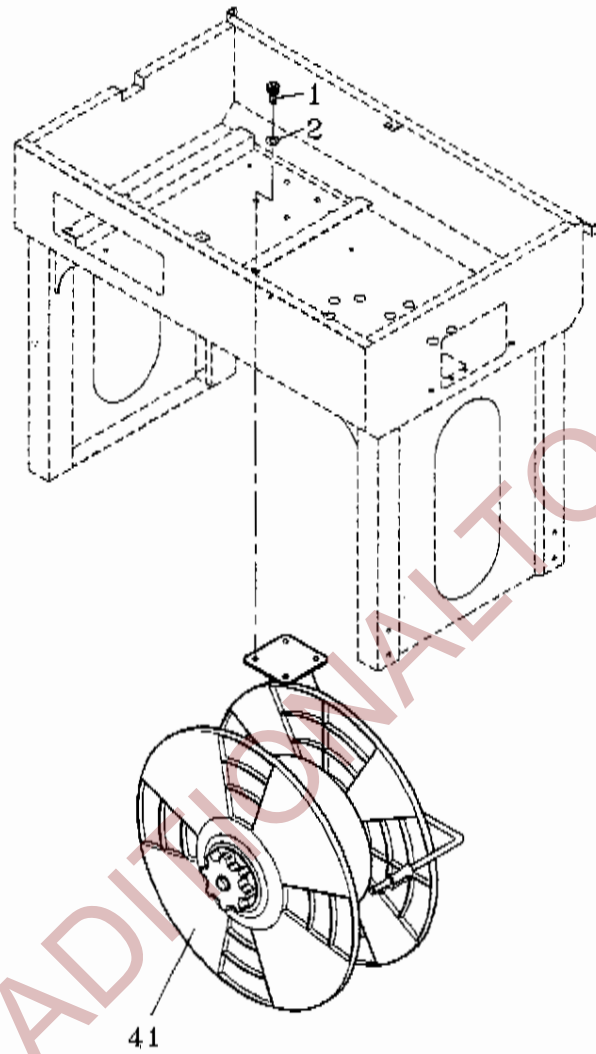
REF. NO.	PARTS NO.	DESCRIPTION	Q'TY	REMARKS
1	T5-2-10000	Body Group	1	SEE PAGE 19
2	T5-2-20000	Top Plate Group	1	SEE PAGE 21



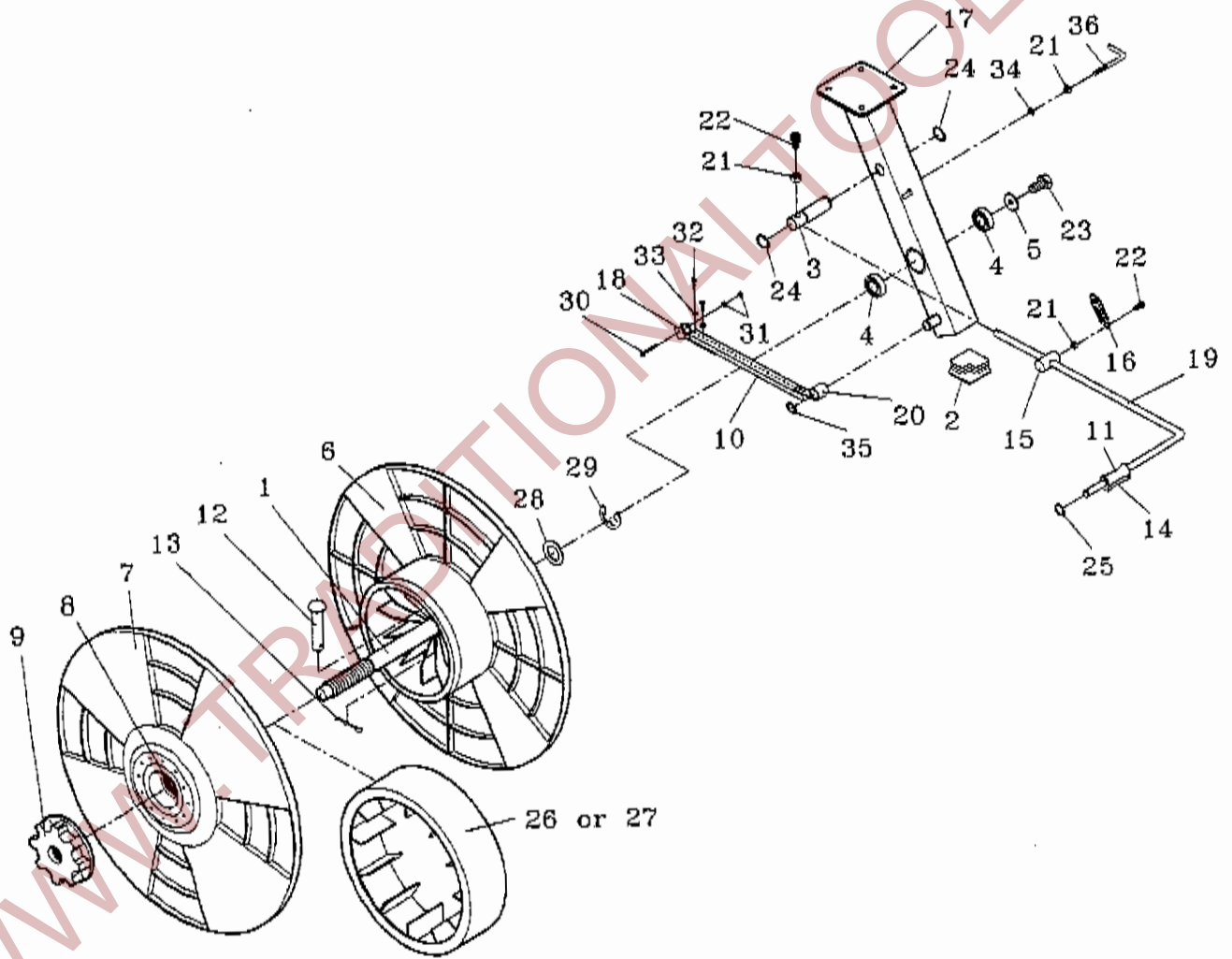
REF. NO.	PARTS NO.	DESCRIPTION	Q'TY	REMARKS
1	T5-2-10110	Frame (For TP-501)	1	
	T5-2-10210	Frame (For TP-502)		
2	T5-2-10120	Base Plate	1	
3	T5-2-10130	Base Plate	1	
4	T5-2-10140	Support	1	
5	T5-2-10150	Side cover	1	
7	T5-2-10170	Hinge	1	
8	T5-2-10180	Grommet	1	
9	T5-2-10190	Front Door (For TP-501)	1	
11	TE-010	Grommet	1	
12	TC-031	Fix Plate	4	
13	TC-030	Adjustable Leg	4	
14	TC-006	Caster (Free)	2	
15	TC-007	Caster (Brake)	2	
16	T6-5-10160	Magnet Catch (For TP-501)	2	
20	TC-058	SW, M6	25	
21	TC-056	PW, M6	32	
23	TA-068	HBS, M6x16	12	
24	TC-062	HN, M6	14	
25	TA-096	HBS, M5x12	6	
26	T6-1-63029	HN, M5	4	
28	TC-068	Collar	1	
29	TC-071	FMS, M6x12	1	
30	T5-2-10400	FMS, M4x8	2	
31	TF-063	SW, M4	1	
32	TC-082	HN, M4	2	
33	TF-054	TMS, M4x8	4	
34	TE-053	TMS, M3x8 (For TP-501)	4	
35	T6-1-71610	HBS, M6x45	1	
37	T5-2-10470	Collar	2	
38	TC-055	SW, M5	6	
39	T6-1-20390	HBS, M4x8	1	
40	T5-2-10500	Grommet	1	
41	TC-072	HB, M6x16	8	
42	T5-2-10520	Colored Decals (A)	1	
43	T5-2-10530	Colored Decals (B)	1	
44	T5-2-10540	Colored Decals (C)	1	
45	T5-2-10550	Colored Decals (D)	1	
46	T5-2-10560	Colored Decals (E) (For TP-501)	1	
47	T5-2-10570	Grommet (For CE)	1	
51	TB-180	PW, M5	8	
56	T5-2-10660	Top Plate Holder	2	
57	TE-051	HBS, M6x12	4	
58	TF-018	Safety Switch	1	
59	TF-031	Switch Cover	1	
60	TF-055	PMS, M4x30	2	



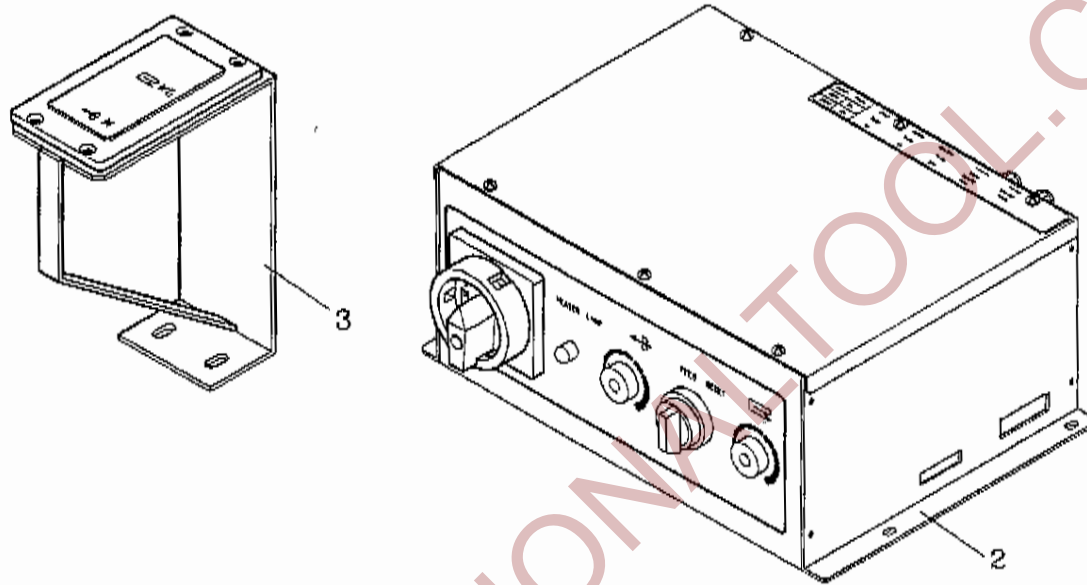
REF. NO.	PARTS NO.	DESCRIPTION	QTY	REMARKS
2	TC-004	Package Guide	1	
3	TC-070	Shaft	2	
4	TE-051	HB, M6x12	2	
5	TC-058	SW, M6	2	
6	TC-056	PW, M6	4	
7	TC-061	WN, M6	2	
8	TC-067	TMS, M6x12	1	
9	TC-052	TMS, M5x8	2	
10	T5-2-20200	Top Plate	1	
11	TE-034	Grommet	1	



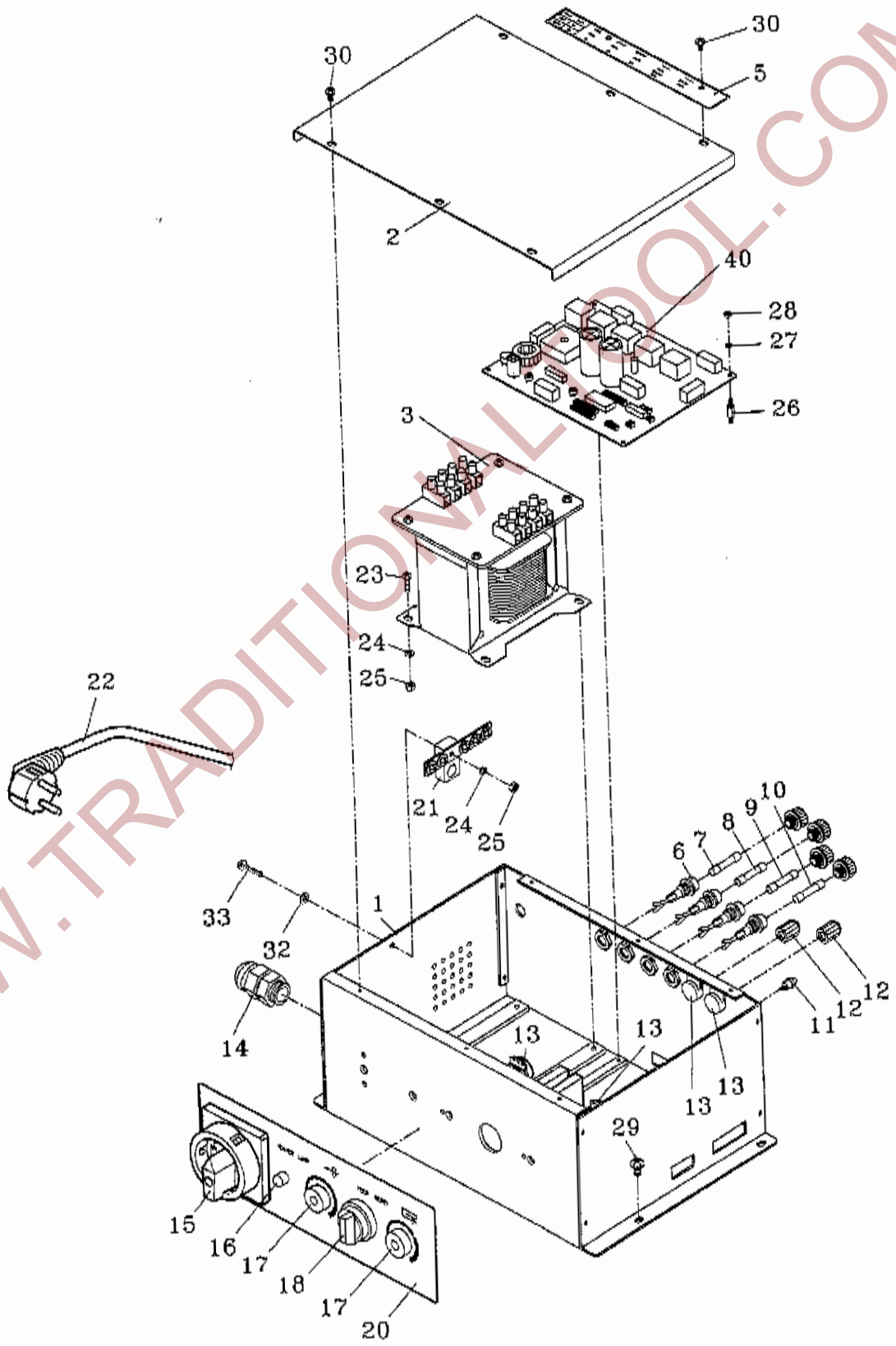
REF. NO.	PARTS NO.	DESCRIPTION	Q'TY	REMARKS
1	TC-063	HBS, M8x16	4	
2	TC-059	SW, M8	4	
41	T5-3-11000	Reel Control Group (TC-044A)	1	SEE PAGE 23



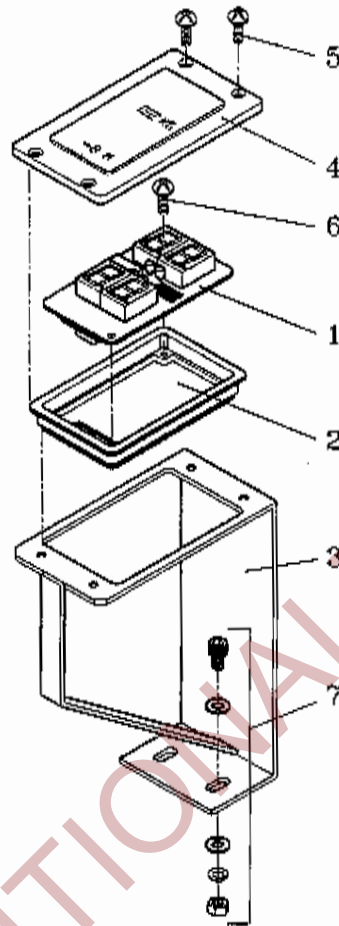
REF. NO.	PARTS NO.	DESCRIPTION	QTY	REMARKS
1	TC-003	Reel Shaft	1	
2	TC-005	Lid	1	
3	TC-009	Brake Shaft	1	
4	TC-010	Bearing	2	
5	TC-011	Washer	1	
6	TC-013	Reel In Circular	1	
7	TC-014	Reel Out Circular	1	
8	TC-015	Protector	1	
9	TC-016	Reel Nut Handle	1	
10	TC-018	Brake Lining	1	
11	TC-019	Roller	1	
12	TC-020	Pin	1	
13	TC-021	Split Pin	1	
14	TC-022	Roller Holder	1	
15	TC-024	Brake Adjuster	1	
16	TC-025	Spring	1	
17	TC-044	Reel Support	1	
18	TC-045-1	Lining Fixed Bracket	1	
19	TC-046-1	Arm	1	
20	TC-050	Lining Holder	1	
21	TC-062	HN, M6	3	
22	TA-068	HBS, M6x16	2	
23	TC-064	HB, M8x16	1	
24	TC-065	Stop Ring S-20	2	
25	TC-066	Stop Ring S-10	1	
26	TC-074	Center Drum 230MM	1	
27	TC-075	Center Drum 280MM	1	
28	TC-076	Washer	1	
29	TC-077	E Ring E19	1	
30	TC-081	HBS, M4x25	1	
31	TC-082	HN, M4	2	
32	TC-083	PMS, M4x16	3	
33	TC-084	PW, M4	3	
34	TC-058	SW, M6	1	
35	TB-119	Stop Ring S-15	1	
36	TC-092	Holder	1	



REF. NO.	PARTS NO.	DESCRIPTION	Q'TY	REMARKS
2	T5-4-20000	Electric Control Unit (For with Readout)	1	SEE PAGE 26
3	T5-4-30000	Indicator Unit (Option)	1	SEE PAGE 28



REF. NO.	PARTS NO.	DESCRIPTION	Q'TY	REMARKS
1	T5-4-10110	Box	1	
2	T5-4-10120	Cover	1	
3	T5-4-10131	Transformer (110V)	1	
5	T5-4-10150	Panel	1	
6	T5-4-10160	Fuse Holder	3	
7	T5-4-10170	Fuse (3A)	1	
8	T5-4-10180	Fuse (1A)	1	
9	T5-4-10190	Fuse (10A)	1	
10	T5-4-10200	Fuse (7A)	1	
11	T5-4-10210	Knob	1	
12	T5-4-10220	Jog Switch	2	
13	T5-4-10230	Variable Resistor	4	
14	T5-2-10500	Grommet	1	
15	TK-001	Power Switch	1	
16	T5-4-10260	Heater Lamp	1	
17	T5-4-10270	Knob	2	
18	T5-4-10280	Selector Switch (Feed/Reset)	1	
20	T5-4-10300	Panel	1	
21	T5-4-10310	Earth Plate	1	
22	T5-4-10321	Power Cord (For CSA/UL)	1	
23	T5-1-10690	PMS, M4x12	4	
24	TF-063	SW, M4	5	
25	TC-082	HN, M4	5	
26	T5-4-10360	Bolt	4	
27	TF-064	SW, M3	4	
28	TC-069	HN, M3	4	
29	T6-1-71650	PMS, M6x10	4	
30	T6-1-63032	PMS, M4x8	6	
32	TC-084	PW, M4	1	
33	TA-093	PMS, M4x20	1	
40	T5-4-20500	P.C.B. For Machine With Readout	1	



REF. NO.	PARTS NO.	DESCRIPTION	Q'TY	REMARKS
1	TG-040	Tension And Length Indicators	1	
2	TG-039	Indicators Under Cover	1	
3	TG-038	Indicators Support	1	
4	TG-041	Indicators Upper Cover (For Metric Size)	1	
	TG-041-1	Indicators Upper Cover (For Inch Size)	1	
5	T6-1-63032	PMS, M4x8	4	
6	TG-043	Screw	2	
7	TG-044	Bolt	1	