



INSTRUCTION MANUAL

***DIGIT POWER  
SMART LXT***

***LXT-19***

WWW.TRADITIONALTOOL.COM

# DIGIT POWER SMART LXT

CE

## Content

1. SAFETY STANDARDS _____	page 3
2. TECHNICAL DATA _____	page 5
3. ACCESSORIES _____	page 5
4. MACHINE COMPOSITION _____	page 6
5. MACHINE INSTALLATION _____	page 6
6. OPERATING INSTRUCTIONS _____	page 7
7. WELDING INSPECTION _____	page 10
8. MAINTENANCE AND REPAIRS _____	page 11
9. GUARANTEE _____	page 15
10. CE CONFORMITY CERTIFICATE _____	page 16
11. DIGIT POWER SPARE PARTS _____	page 17
12. DIGIT POWER ASSEMBLY DRAWING _____	page 19
13. SMART LXT SPARE PARTS _____	page 20
14. SMART LXT ASSEMBLY DRAWING _____	page 22

## 1.SAFETY STANDARDS



It is necessary to read the manual herein, to correctly carry out the information it contains, to use the equipment in conformity with the manufacturer's instruction and in conformity with current accident prevention regulations to avoid accidents and serious injuries both to operators and third parties, as well as damage to the equipment.



It is mandatory to inform in advance all personnel operating on the equipment on the contents of the manual herein, especially the chapters related to safety provisions, use and maintenance.

This instruction manual is addressed to all personnel concerned in the handling, operation, maintenance and cleaning of the equipment, and is part and parcel of the same, it is therefore necessary to preserve it for future reference and when ordering spare parts.

The manufacturing company reserves the right to modify the manual herein at any time, with no obligation to update previous machinery and manuals.

Contact your retailer for any question concerning the equipment.

### GENERAL REMARKS AND INSTRUCTIONS



#### INTENDED USE

**The equipment described in the manual herein is intended, in conformity with design specifications, solely for packing purposes using plastic straps, every other use is forbidden.**

The equipment must be used, serviced and cleaned only by adequately trained personnel, that must have read the manual herein; the non compliance of its provisions, the forbidden or incorrect use of the equipment and lack of maintenance precludes the manufacturer from any liability and rendering the guarantee terms null and void.

Any defect, malfunction, or wear of the equipment must be promptly notified to the manager by the operator in charge of the equipment; never use equipment that shows clear signs of damage or wear.

#### OPERATORS' SAFETY EQUIPMENT



Pay attention to those parts that may cause injuries, such as cuts, abrasions or crushing, also in relation with the product to be packaged; to this purpose it is necessary to wear protection goggles or masks to protect the eyes and/or face as well as safety gloves, when using the strapping tool under tension.

#### WORK ENVIRONMENT

The work place must be kept tidy and clean for safety purposes.

Use the equipment in a stable position, checking that the equipment itself cannot injure anyone even if it falls, we suggest to block it in position with the hook intended for this purpose.

**This equipment has been designed to be used with environmental temperatures between +5 C° +45 C°, it is on any account advisable to avoid very damp locations, and when used outdoors avoid exposure to rain.**

**Do not use in places where there is danger of fire or explosion.**

## SAFE USE OF THE STRAPPING TOOL



**It is forbidden to lift, hang or pull the packaging using the straps, the non compliance with this provision may result in serious risks for persons or damages to equipment.**

When unrolling strap use the device intended for this purpose; always rewind any excess strap. Do not scatter pieces of unused strap in the work place.

Remember that tensioned straps may be only cut with special shears, avoid to use tools that are not adequate; keep at a safe distance from the strap to be cut, and verify that no other person is near the risk area, cut straps tend to snap backwards.

**Serious injuries and damages to equipment may result if the equipment is not correctly used, if the strap is over tensioned and/or if non adequate straps are used, in relation with the product to be packaged (sharp edges, high temperatures, etc.), due to sudden sagging or breakage of the straps.**

The operator in charge of strapping is responsible for the quality of the same, it is therefore advisable to specially train personnel in relation with the evaluation and control criteria of the **sealing** and of the adjustments to be done to optimize it, listed in the following chapters.

**Defective seals will not guarantee safety conditions during handling of goods, and may cause serious injuries to persons and/or damages to equipment if they sag. Do not handle packaged goods with doubtful or defective seals.**

## MACHINE MAINTENANCE



**Disconnect the battery before carrying out any intervention on the machine.**

It is strictly forbidden to modify the machine or to remove the safety protections installed. Maintenance or repair work, as well as the normal substitution of worn parts and cleaning operations. This must be carried out by personnel duly qualified by authorized distribution outlets and service centers.

## INSTRUCTION FOR THE BATTERIES



Depleted or defective batteries must be disposed of in conformity with current law provisions, they must not be discarded in the environment.

It must be remembered that the batteries must be kept with care, the poles must be protected with their cap to avoid short circuits, they must be kept in a dry place, protected from frost and humidity, and must not be exposed to temperatures exceeding 50°C.

They must not be over charged, and in the event of defects or breakages of the body, they must be immediately substituted and not re-charged. Do not try to open the batteries.

Further information is supplied in the enclosed instructions from the battery manufacturer.

## INSTRUCTION FOR THE BATTERY CHARGER



Before using the battery charger, make sure that the plug and the cable are not damaged, if necessary replace them. Also ensure that the battery housing is clean and the contacts are not damaged.

**Always protect the charger from humidity, blows and temperatures exceeding 50°C and from frost.**

*Further information is supplied in the enclosed instructions from the batteries manufacturer.*

## 2. TECHNICAL DATA

### DESCRIPTION

The equipment described in the manual herein is intended to strap packaging with plastic straps using a vibration welding system. The strap must be manually positioned around the goods to be packaged with care, it must then be positioned in the machine, tensioned and sealed by welding, and at the same time cut and separated from the rest of the strap.

### DIMENSIONS AND CHARACTERISTICS WITH INSTALLED BATTERY (standard configuration without accessories)

	<i><b>DIGIT POWER</b></i>	<i><b>SMART LXT</b></i>	<i><b>SMART LXT 19</b></i>
Length	mm 350		
Width	mm 130		
Height	mm 165		
Strap quality	PP / PET		
Sealing type	VIBRATION		
Welding efficiency	75-85% OF BREAKAGE LOAD OF THE USED STRAP		
Neck type	ROUND PACKAGE (minimum diameter 700 mm)		
Strap width	16 - 19 mm.	10 - 16 mm.	16 - 19 mm.
Strap thickness	0.8 - 1.27 mm.	0.5 - 1.05 mm	0.5 - 0.8 mm
Max tension	3.400 N / 347 Kg.	2.300 N / 235 Kg.	
Max tension speed	10 mt / min	12 mt / min	
Cycles per load	80 - 240		
Reload time	22 min.		
Battery	Makita 14.4 VDC / 3.0 Ah - Li-ion		
Charger	Battery charger Makita 14.4 VDC power supply 220-240V		
Weight (including battery)	Kg. 3.9	Kg. 3.8	

### MODEL TABLE

Model	Code	Strap width
DIGIT POWER	C126990810Z	16 - 19 mm.

Model	Code	Strap width
SMART LXT	C127990810Z	10 - 16 mm.

Model	Code	Strap width
SMART LXT 19	C159900810Z	16 - 19 mm.

## 3. ACCESSORIES



Only use original accessories listed in this manual.

### BATTERIES

Spare batteries with the following codes are available:

Type Li-ion 14.4 VDC 3.0 Ah (220-240 V) code 521009920.

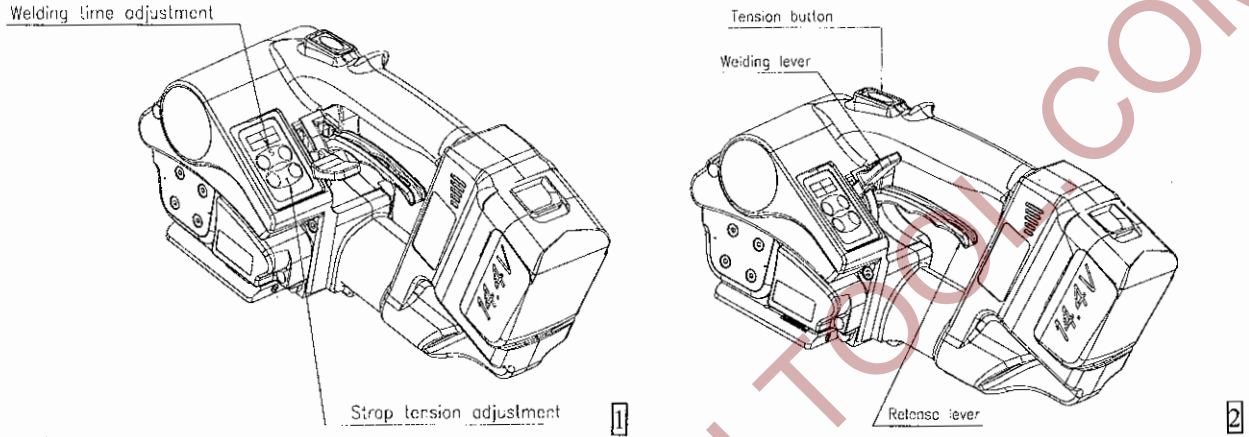
For information regarding the characteristics, the operating procedures and maintenance, please refer to the instructions attached to the product by the manufacturer.

## BATTERY CHARGER

The battery charger is not supplied with the machine, it must be specifically ordered referring to the following codes:  
Battery charger code **C521009930Z**

For information regarding the characteristics, the operating procedures and maintenance, please refer to the instructions attached to the product by the manufacturer

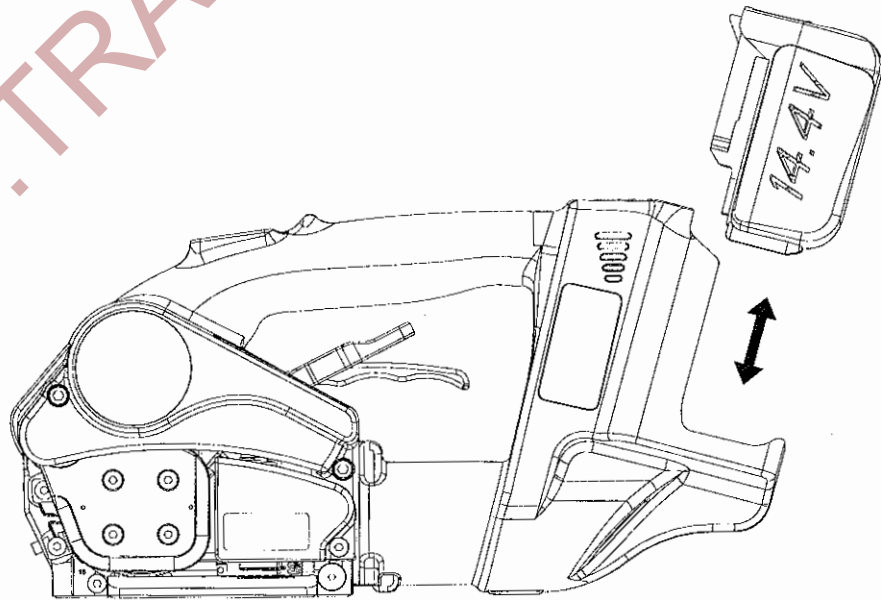
## 4. MACHINE COMPOSITION



## 5. MACHINE INSTALLATION

**The battery is supplied discharged.**

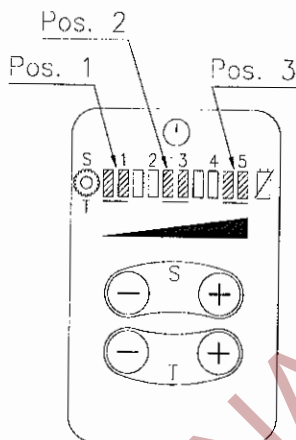
The battery must be positioned in its housing at the end of the handle until it fits perfectly in the blocks ( pict. 3 ).





Only use straps which are in perfect conditions.

DISPLAY INDICATING	
Pos. 1	Machine ready to tension strap
Pos. 2	Strap cooling after welding.
Pos. 3	Battery down (fix lamp) Card overheating (flasher lamp)



4

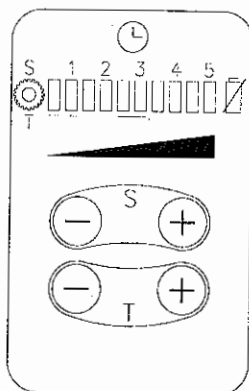
## 6. OPERATING INSTRUCTIONS

### STARTING TOOL

- When the battery is correctly positioned press the button down to switch on the tool.

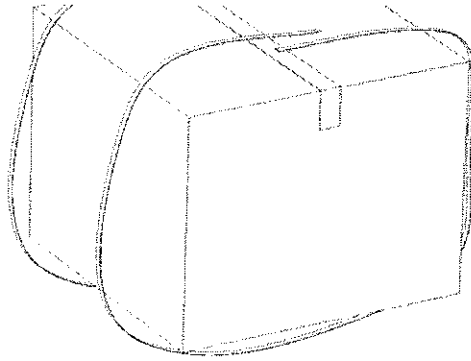
### WELDING AND TENSION ADJUSTMENT

To adjust the welding time push and hold the keypad "S" + button down for 5 seconds. This will put the tool into "program function". Afterward push (+ or -) to increase or decrease welding time or strap tension (pict.5). The programming card will automatically record the new values after 10 seconds.



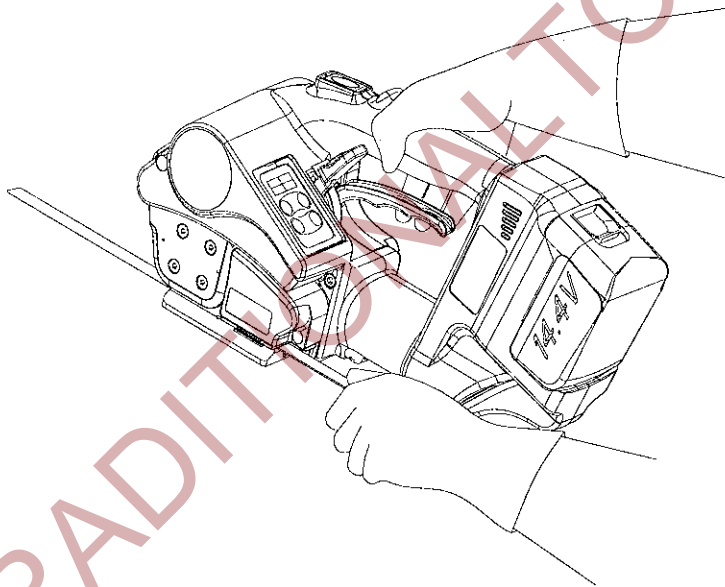
5

- Position the strap around the package ( pict. 6 ).



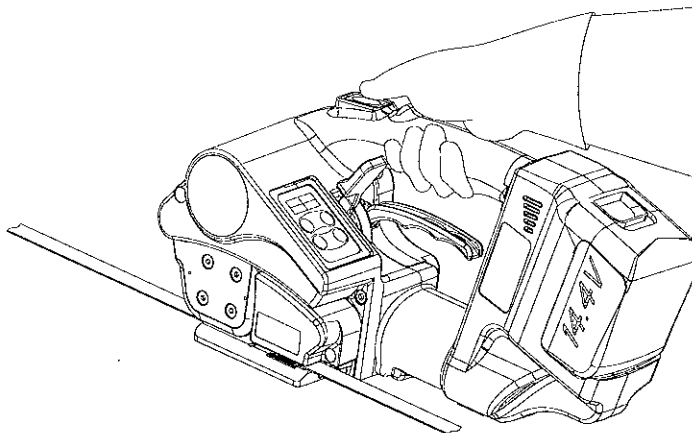
6

- Squeeze the release lever with the right hand to open the machine and position with the left hand two straps together, perfectly aligned. Release the lever. The guides will keep the straps aligned ( pict . 7 ).



7

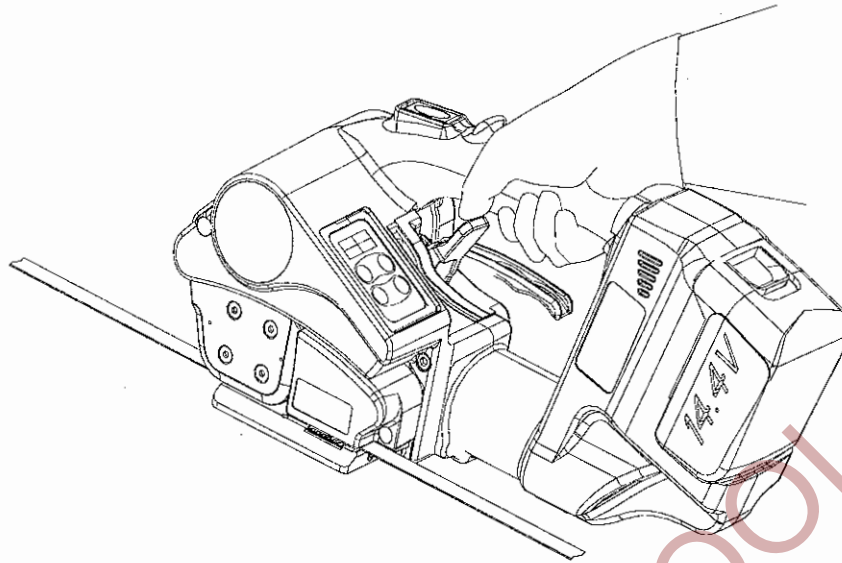
- Push the tension button until the programmed tension is reached (tension motor will stop) ( pict . 8 ).



8

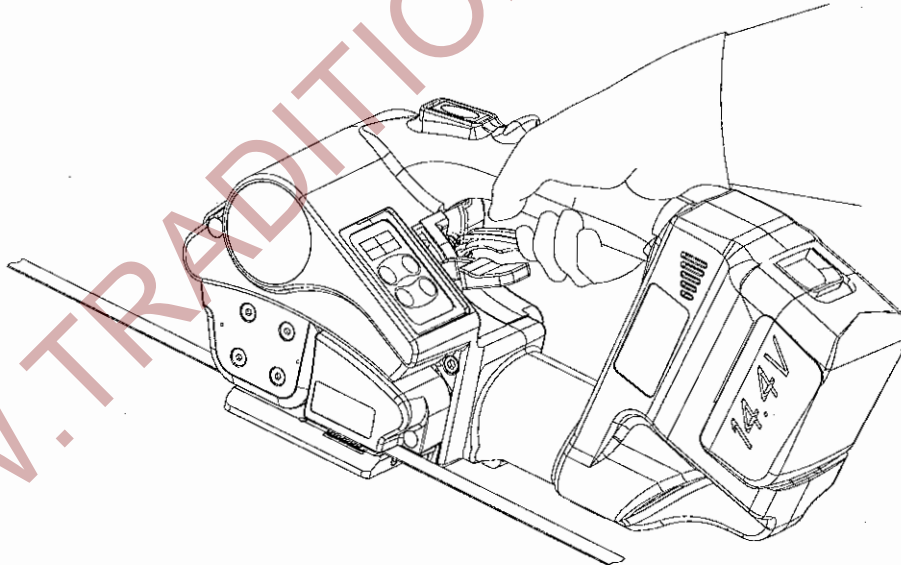


- Lower the lever in order to execute the cycle of welding, cut and cooling of the strap ( pict . 9 ).
- An acoustic signal will be transmitted at the end of the process.



9

- Lift up the release lever and remove the tool ( pict. 10 ).



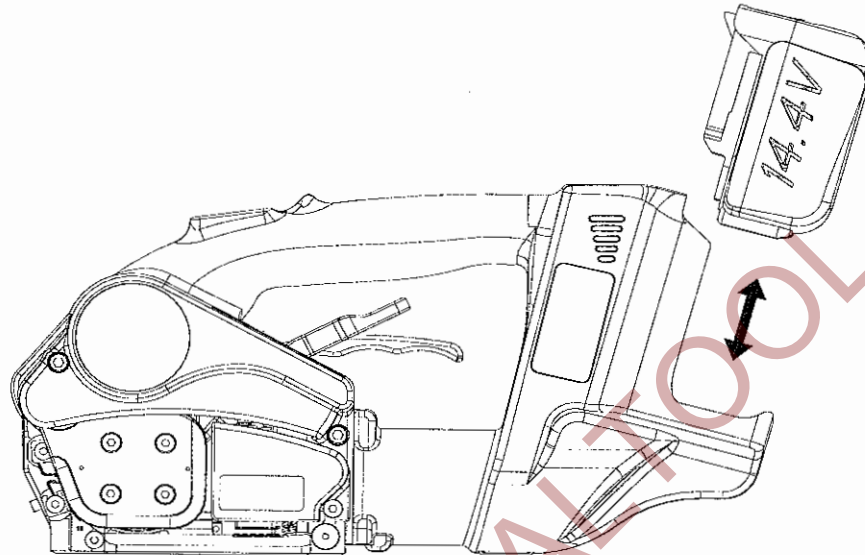
10



When the battery has an insufficient charge for proper machine operation, the red signalling fix lamp in the right side of the display will illuminate and all functions will lock.

To remove the battery, press the release button and pull out; replace with a fully charged battery (pict . 11 ).

**Any insufficient seal or weld is to be considered not adequate and must be discarded.**



11

## 7. CHECKING THE WELDING

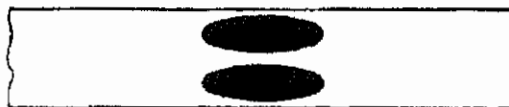
A visual inspection of the sealing area is sufficient to check the sealing quality. For inspection, you can also peel back the weld strap and examine the weld:

- **Correct sealing:** The sealing must be welded across the entire width of the strap and for a length of approximately 25 mm. Small quantities of plastic material may escape from the welding area. (pict. 12 ).



12

- **Short welding time:** the plastic straps are not welded across their entire width. If the sealing is not sufficient, discard the strap, increase the welding time and repeat the process. (pict. 13 ).



13

- **Long welding time:** the material is overheated and escapes from the sides of the welding area. If the sealing is inadequate, discard the strap, reduce the welding time and repeat the process. (pict. 14 ).



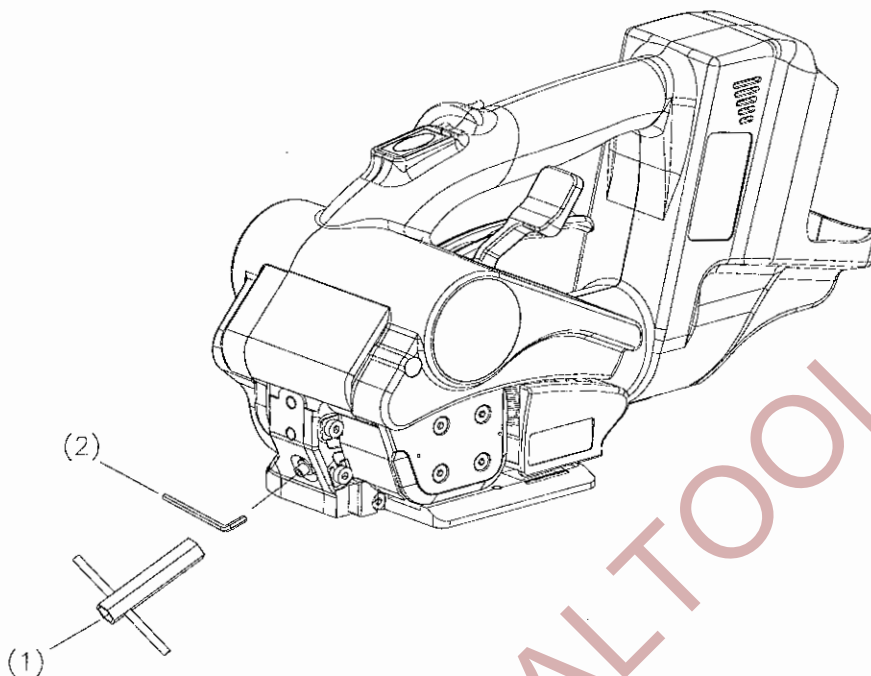
14

## FEEDWHEEL HIGHT ADJUSTMENT

Loosen the nut (516002250) with socket wrench for size 10. ( 1 ).

Regulate the height of the feedwheel unfasten the screw code 515009790 with allen wrench for size 2.5 ( 2 ).

Adjusted the height of the feedwheel fasten the nut (516002250) with a socket wrench size 10. ( 1 ).



## 8. MAINTENANCE AND REPAIR

**NOTE: all cleaning operations must be carried out with the battery disconnected from the machine.**



Maintenance and repairs must be carried out only by trained personnel. If necessary send the strapping tool, using original packaging, to the nearest service center.

### CLEANING



Use compressed air to eliminate possible residuals of strap from the feedwheel and from the welding group. It is not necessary to open the machine.

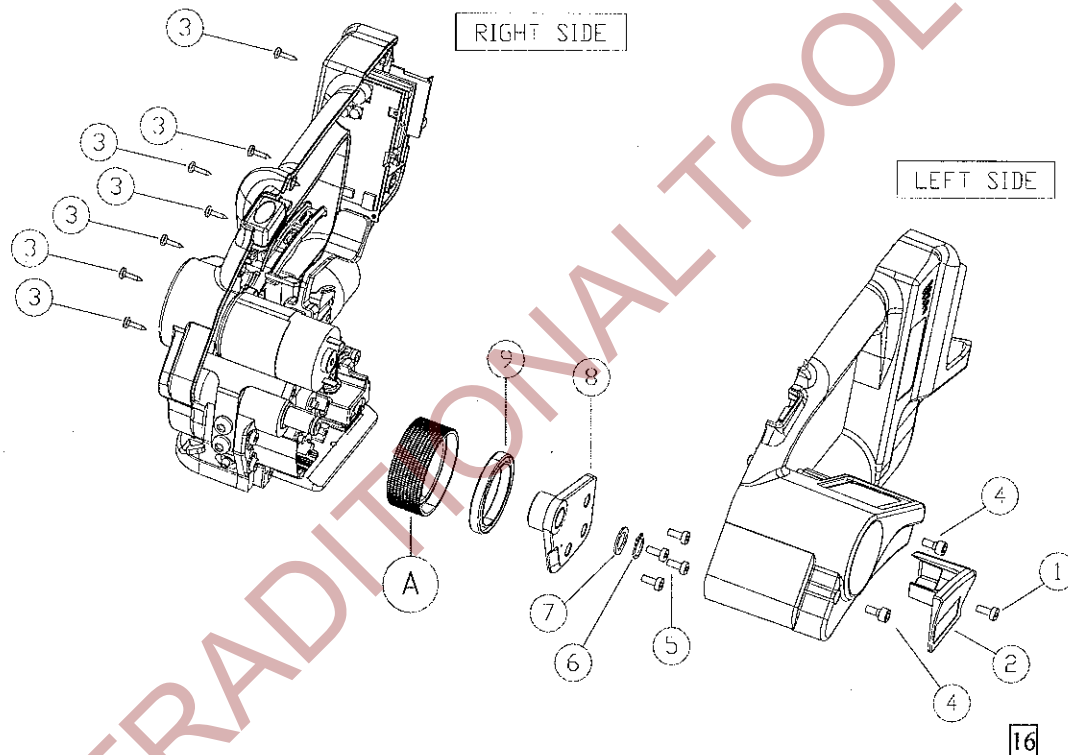


**NOTE: When servicing the tool you must first remove the battery.**

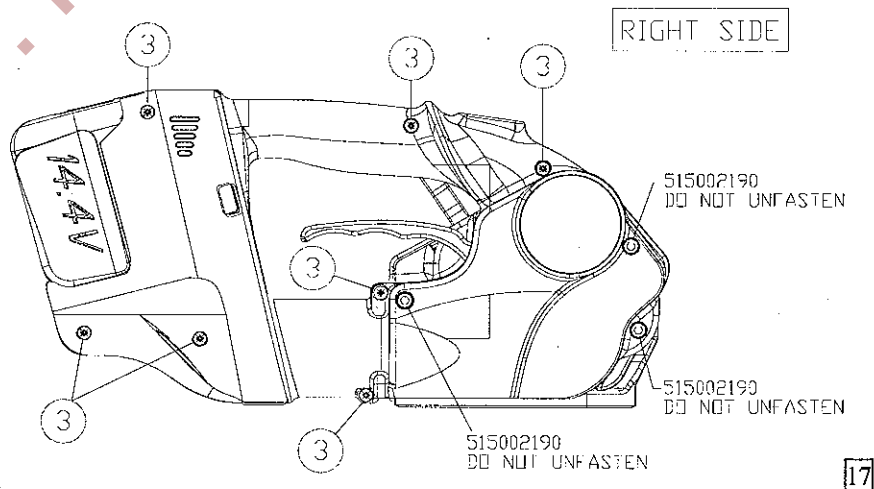
**Feedwheel replacement**

- Unfasten the fixing cover screw “1” of the left side of the tool and remove the cover “2”
- Unfasten the fixing cover screws of the right side of the tool (n°7 “3”).
- Unfasten the fixing cover screws of the left side of the tool (n°2 “4”) and open the tool.
- Unfasten no.4 screws “5”, remove the clip “6”, remove the spacer “7”, remove the roller clamp and the bearing “8-9” and replace the feedwheel “A”.

**TAKE CARE TO THE WIRING.**



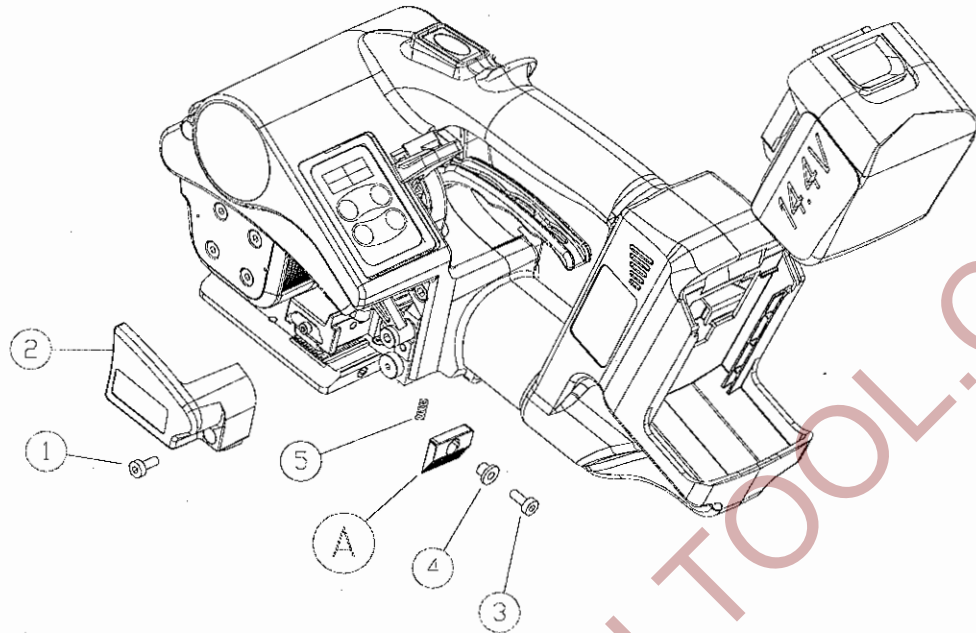
**Attention: DO NOT unfasten screws code 515002190 in the right side of the tool.**



**To reassemble the machine repeat the operations described in reverse order.**

## Cutter replacement

- Unscrew the screw “1” and remove the smart welding cover “2”
- Unscrew the screw “3”, remove the cutter guide space “4” and replace cutter “A”.
- Take care the spring in the position “5”

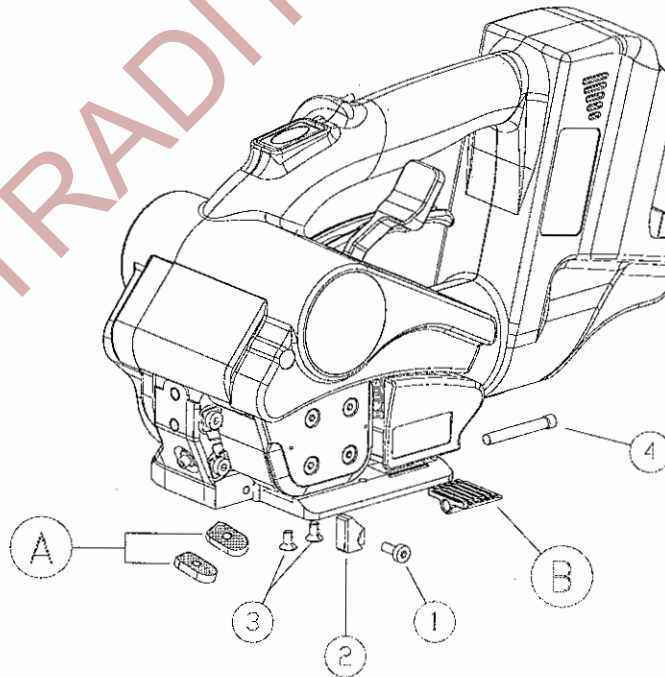


18

**NOTE: Disconnect battery before servicing machine!**

## Replace feedwheel plate and moving sealing plate

- To replace the feedwheel plate unfasten the screw “1”, remove the head guide “2”, unfasten the two screws “3”, and insert new grippers “A”
- To replace the moving sealing plate unfasten the screw “4”, remove the old plate and replace it with a new “B”.

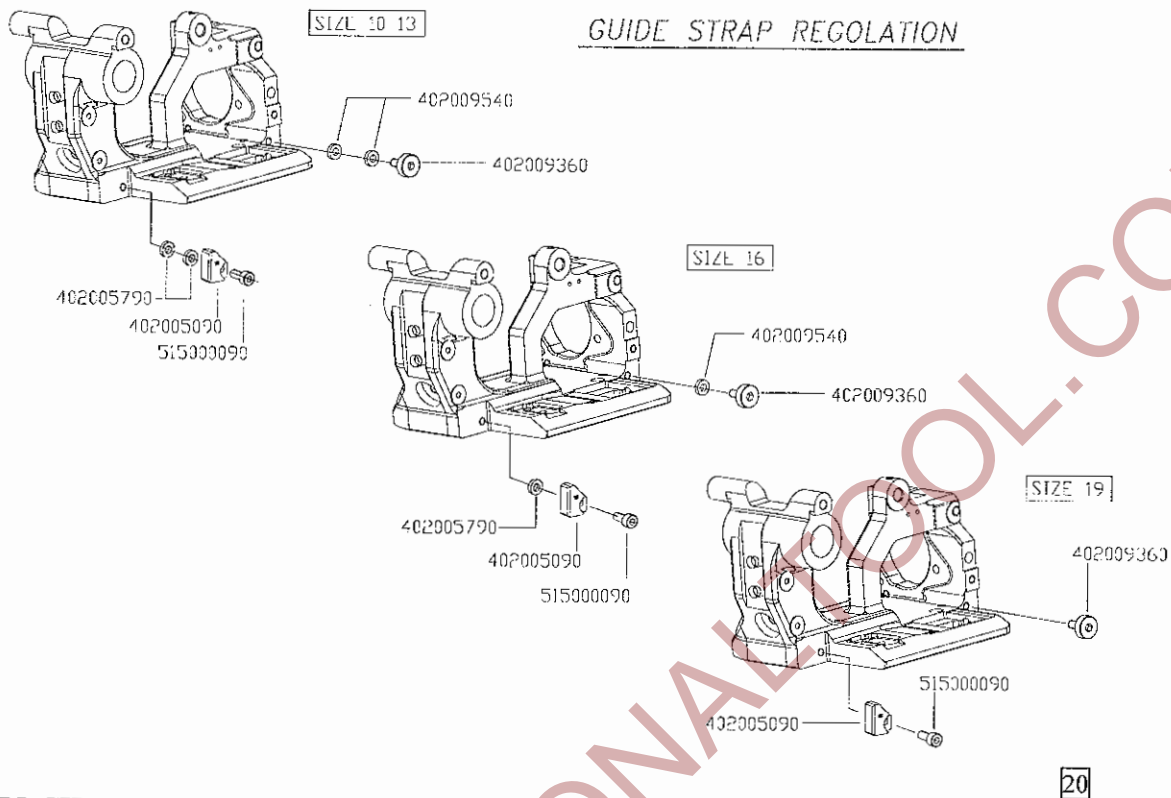


19

To reassemble the machine repeat the operations described in reverse order.

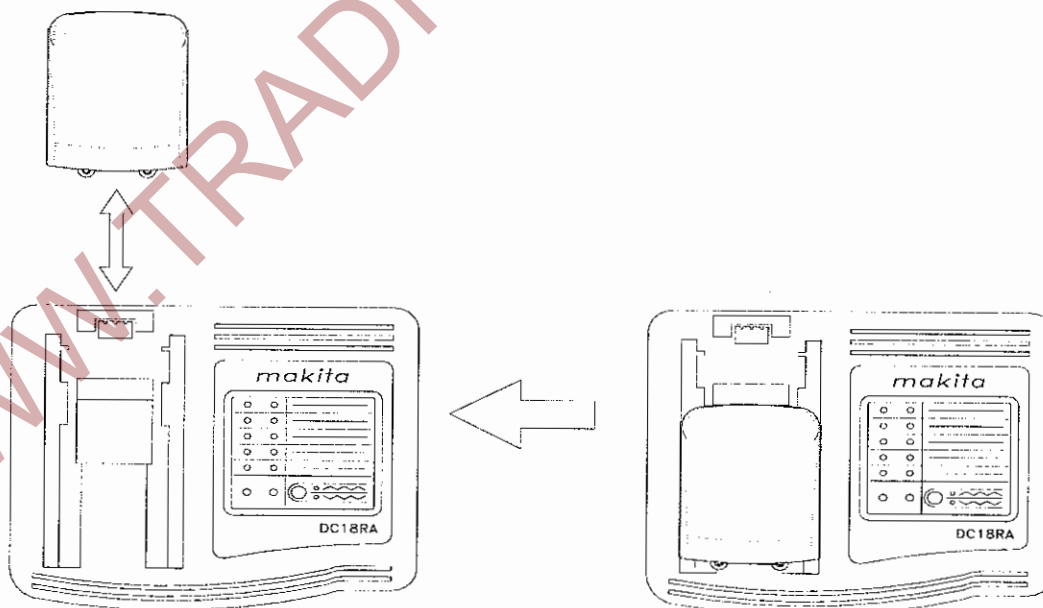
## GUIDE STRAP SET-UP

- To obtain the strap sizes you need follow the indications (pict. 20).  
No. 1 guide strap spacer code 402005790 and no.1 spacer code 402009540 are in equipment inside the box.



## TO CHARGE THE BATTERY

To charge the battery, insert it in the right position in the battery charger housing.



## 9. GUARANTEE

Every machine supplied by our company is guaranteed for a period of 6 months starting from the date of dispatch stated on the accompanying note.

During the whole guarantee period, our company will replace free of charge, all the parts proved to be defective by reason of faulty workmanship or materials, and which may compromise the normal machine usage. The decision of our service technicians on all the matters relating to complaints shall be final. Any control of defects and their origin will be carried out in our workshop at the following address:

Via della Repubblica, 44 – 20020 SOLARO (Mi) Italia

Parts to be repaired or replaced have to be forwarded to our address at the care, charge and risk of the customer; the return forwarding will take place at the same conditions. We suggest to use the original packaging for shipping.

The guarantee does not cover the equipment whenever our technicians observe that the defects are due to lack of maintenance and/or misuse, which is not in compliance with our instructions.

**Our guarantee shall not apply to all parts subject to normal usage wear (refer to basic list).**

NOTE: Columbia will not undertake any intervention on machines whose serial number, engraved during manufacture and quoted on the sales document provided, has been intentionally modified or removed.

WWW.TRADITIONALTOOL.COM



**DISTINTA RICAMBI / SPARE PARTS LIST - DIGIT POWER - Agg. / Upd. 06/2009**

CODE	Q.TY	DESCRIZIONE	DESCRIPTION
210338004	1	GRUPPO TELAIO	MAIN FRAME KIT
210938500	1	GRUPPO GUSCI DX - SX	RIGHT - LEFT COVER KIT
210938600	1	ASSIEME LEVA APERTURA	OPENING LEVER KIT
210944200	1	GRUPPO STAFFA RULLO	ROLLER CLAMP KIT
210944300	1	GRUPPO FLANGIA MOTORE	MOTOR FLANGE KIT
210949300	1	KIT RUOTA PER ARPIONISMO NUOVA	BARRING GEAR WHEEL KIT
211240100	1	GRUPPO SUPPORTO PUNTALE	SUPPORT STRIKER KIT
212044700	1	GRUPPO SALDATURA (19) DOPPIO CUSC.	WELDING KIT (19) DOUBLE BEARING
291330800	1	ASSIEME MOTORE TENS.+PIGNONE	ASS. TENS. MOTOR + PINION
291334200	1	ASSIEME MOTORE SALD.+PIGNONE	ASS. WELDING MOTOR + PINION
401009450	1	CARTER SALD.	WELDING COVER
401009530	1	FLANGIA	FLANGE
⊕ 402002990	2	PIASTRINA BLOCCAREGGIA	STRAP PLATE
402004980	1	DISTANZIALE BLOCC. RUOTA OZIOSA	PIN COVER
402005010	1	BLOCCO RIDUTTORE EPICICLOIDALE	EPICYCLIC REDUCER
402005060	1	RUOTA OZIOSA PER RIDUTTORE	COMPL.LOOSE WHEEL
402005090	1	GUIDA REGGIA ANT.DX.	HEAD GUIDE STRAP
402005410	1	DISTANZIALE RUOTA OZIOSA	SIDE PIN SPACER
⊕ 402005510	1	RULLO TRASCINAMENTO	FEEDWHEEL
402005790	1	RONDELLA	WASHER
402009330	1	AGGANCIO MOLLA	SPRING PIN
402009350	1	PERNO PIASTRA OSCILLANTE	MOVING SEALING PLATE PIN
402009360	1	GUIDAREGGIA POST	REAR GUIDE STRAP
402009400	1	PERNO FISS.	STEADY PIN
402009490	1	ARPIONE SMART	PAWL SMART
402009540	1	(*)SPESS.GUIDAREGGIA - GRUPPO IMBALLO	(*)GUIDESTRAP SPACER - PACKAGE GROUP
402009670	1	PERNO	SHAFT
402009680	1	PERNO CAMMA	CAM SHAFT
⊕ 402010950	1	PIASTRA SALDATURA OSCILLANTE	MOVING SEALING PLATE
402010960	1	SUPPORTO CARRELLO	CARRIAGE SUPPORT
⊕ 402010980	1	PIASTRA SALDATURA	SEALING PLATE
⊕ 402010990	1	CESOIA DIGIT POWER	CUTTER DIGIT POWER
402011220	1	CAMMA AZIONAMENTO	WELDING CAM
402012730	1	ALBERO ECCENTRICO	ECCENTRIC SHAFT
403009590	1	BOCCOLA GUIDA CESOIA	CUTTER GUIDE SPACER
404009660	1	TAPPO CONN.PROGR.DIGIT POWER	DIGIT POWER PROGR. LINK COVER
404011060	1	SUPPORTO SWITCH	SWITCH SUPPORT
404011070	1	COPERTURA CENTRALE DIGIT POWER	DIGIT POWER MIDDLE COVER
404011080	1	COPERTURA PULS. DIGIT POWER	DIGIT POWER BUTTON COVER
404011090	1	COPERTURA TAST. DIGIT POWER	DIGIT POWER KEYBOARD COVER
407009480	1	MOLLA PULSANTE	BUTTON SPRING
407009780	1	MOLLA SOLLEVAMENTO	LIFT SPRING
407009790	1	MOLLA CESOIA	CUTTER SPRING
407010570	1	MOLLA PRECARICO GR.RULLO	LOAD SPRING
408009310	1	LAMIERINO D'APPOGGIO	PROTECTION
408009500	1	FLANGIA MOTORE	MOTOR FLANGE
408009620	1	COPERTURA SFERE	COVER
408010560	1	PROTEZIONE RULLO SMART	FEEDWHEEL PROTECTION
413011130	1	ADESIVO TASTIERINO DIGIT POWER	KEYBOARD LABEL
501003570	1	CUSCINETTO 61808-RS1	BUSHING 61808-RS1
503000990	1	SEEGER EST. A12 DIN471	SEEGER EST. A12 DIN471
503002770	2	ANELLO ELAS.XALB.D8 7435	ELAST.RING D8 7435
503004490	1	ANELLO PS 21X15X0.5	RING PS 21X15X0.5
503004570	1	SEEGER D 15 UNI 7435	SEEGER D15 UNI 7435
503004590	1	SEEGER D 34 UNI 7435	SEEGER D34 UNI 7435
503009660	1	ANELLO PS 12x18x0,5	RING PS 12x18x0,5
503010680	2	RANELLA SCHNORR PER M4	M4 SCHNORR PS
508010030	1	MOLLA ROSSA G13-039	RED SPRING G13-039
509007630	2	CUSCINETTO EZO 61902 2Z (F541015045)	BEARING EZO 61902 2Z (F541015045)



**DISTINTA RICAMBI / SPARE PARTS LIST / SERIE SMART LXT / LXT-19 - Upd. 06/2009**

CODE	Q.TY	DESCRIZIONE	DESCRIPTION		
210338004	1	ASSIEME TELAIO SMART - LXT	MAIN FRAME KIT		
210938500	1	GRUPPO GUSCI DX - SX	RIGHT - LEFT COVER KIT		
210938600	1	ASSIEME LEVA APERTURA	OPENING LEVER KIT		
210944200	1	GRUPPO STAFFA RULLO	ROLLER CLAMP KIT		
210944300	1	GRUPPO FLANGIA MOTORE	MOTOR FLANGE KIT		
***	210949000	1	GRUPPO SALDATURA (16) DOPPIO CUSC.	WELDING KIT (16) DOUBLE BEARING	
	210949300	1	KIT RUOTA PER ARPIONISMO NUOVA	BARRING GEAR WHEEL KIT	
	211240100	1	GRUPPO SUPPORTO PUNTALE	SUPPORT STRIKER KIT	
***	212044700	1	GRUPPO SALDATURA (19) DOPPIO CUSC.	WELDING KIT (19) DOUBLE BEARING	
	291330900	1	ASSIEME MOTORE TENS.+PIGNONE	TENS. MOTOR + PINION KIT	
	291334200	1	ASSIEME MOTORE SALD.+PIGNONE	WELDING MOTOR + PINION KIT	
	401009450	1	CARTER SALD.	WELDING COVER	
	401009530	1	FLANGIA	FLANGE	
⊕	402002990	2	PIASTRINA BLOCCAREGGIA	STRAP PLATE	
	402004980	1	DISTANZIALE BLOCC. RUOTA OZIOSA	PIN COVER	
	402005010	1	BLOCCO RIDUTTORE EPICICLOIDALE	EPICYCLIC REDUCER	
	402005060	1	RUOTA OZIOSA PER RIDUTTORE	COMPL.LOOSE WHEEL	
	402005090	1	GUIDA REGGIA ANT.DX.	HEAD GUIDE STRAP	
⊕	402005410	1	DISTANZIALE RUOTA OZIOSA	SIDE PIN SPACER	
	402005510	1	RULLO TRASCINAMENTO	FEEDWHEEL	
	402005790	1	RONDELLA	WASHER	
	402005790	1	RONDELLA - GRUPPO IMBALLO	WASHER - PACKAGE GROUP	
	402009330	1	AGGANCIO MOLLA	SPRING PIN	
***	⊕	402009340	1	PIASTRA SALDATURA OSCILLANTE 16	MOVING SEALING PLATE 16
		402009350	1	PERNO PIASTRA OSCILLANTE	MOVING SEALING PLATE PIN
		402009360	1	GUIDAREGGIA POST	REAR GUIDE STRAP
		402009400	1	PERNO FISS.	STEADY PIN
		402009490	1	ARPIONE SMART	PAWL SMART
		402009540	1	SPESS.GUIDAREGGIA	GUIDESTRAP SPACER
		402009540	1	SPESS.GUIDAREGGIA - GRUPPO IMBALLO	GUIDESTRAP SPACER - PACKAGE GROUP
***	⊕	402009600	1	PIASTRA SALDATURA 16	SEALING PLATE 16
***	⊕	402009610	1	CESOIA 16	CUTTER 16
		402009670	1	PERNO	SHAFT
		402009680	1	PERNO CAMMA	CAM SHAFT
***	⊕	402010950	1	PIASTRA SALDATURA OSCILLANTE 19	MOVING SEALING PLATE 19
***		402010960	1	SUPPORTO CARRELLO 19	CARRIAGE SUPPORT 19
***	⊕	402010980	1	PIASTRA SALDATURA 19	SEALING PLATE 19
***	⊕	402010990	1	CESOIA 19	CUTTER 19
***		402011210	1	SUPPORTO CARRELLO 16	CARRIAGE SUPPORT 16
		402011220	1	CAMMA AZIONAMENTO	WELDING CAM
		402012730	1	ALBERO ECCENTRICO	ECCENTRIC SHAFT
		403009590	1	BOCCOLA GUIDA CESOIA	CUTTER GUIDE SPACER
		404009390	1	COPERTURA TASTERINO	KEYBOARD COVER
		404009430	1	COPERTURA CENTRALE	MIDDLE COVER
		404009440	1	COPERTURA PULS.	BUTTON COVER
		404009660	1	TAPPO CONN.PROGR.DIGIT POWER	DIGIT POWER PROGR. LINK COVER
		404011060	1	SUPPORTO SWITCH	SWITCH SUPPORT
		407009480	1	MOLLA PULSANTE	BUTTON SPRING
		407009780	1	MOLLA SOLLEVAMENTO	LIFT SPRING
		407009790	1	MOLLA CESOIA	CUTTER SPRING
		407010570	1	MOLLA PRECARICO GR.RULLO	LOAD SPRING
		408009310	1	LAMIERINO D'APPOGGIO	PROTECTION
		408009500	1	FLANGIA MOTORE	MOTOR FLANGE
		408009620	1	COPERTURA SFERE	COVER
		408010560	1	PROTEZIONE RULLO SMART	FEEDWHEEL PROTECTION
***		413011640	1	ADESIVO TASTIERINO LXT 16	LXT 16 KEYBOARD LABEL
***		413012460	1	ADESIVO TASTIERINO LXT 19	LXT 19 KEYBOARD LABEL

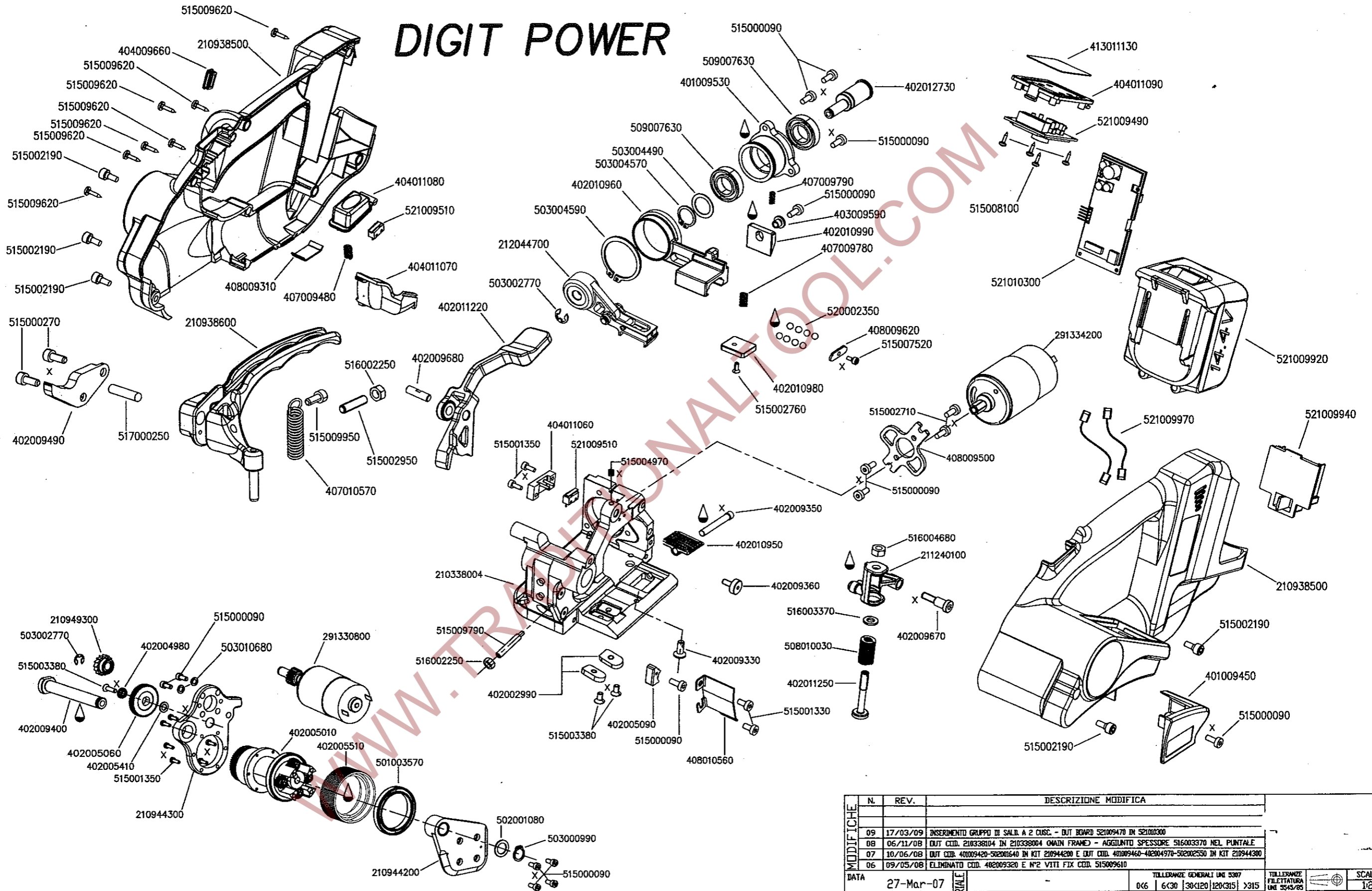






WWW.TRADITIONALTOOL.COM

# DIGIT POWER



INGRASSARE - GREASE  
 USARE - USE : LOCTITE

MODIFICHE		DESCRIZIONE MODIFICA	
N.	REV.		
09	17/03/09	INSERIMENTO GRUPPO DI SALDI A 2 CUSC. - BUT BOARD 521009470 IN 521010300	
08	06/11/08	DUT CDD. 210338104 IN 210338004 (CHAIN FRAME) - AGGIUNTO SPESSORE 516003370 NEL PUNTALE	
07	10/06/08	DUT CDD. 401009420-502001640 IN KIT 210944200 E DUT CDD. 401009460-402004970-502002550 IN KIT 210944300	
06	09/05/08	ELIMINATO CDD. 402009320 E N°2 VITI FIX CDD. 515009610	

DATA	27-Mar-07	TOLLERANZE GENERALI UNI 5307				TOLLERANZE FILETTATURA UNI 2842/85	SCALA
FIRMA	N.I.	0/6	6/30	30/120	120/315	X315	1/2
TRATTAMENTO	-	+0.05	+0.10	+0.15	+0.20	+0.30	VITE MADR. SMUSI NON QUOTATI
DENOMINAZIONE	DISTINTA RICAMBI / SPARE PARTS LIST / ERSATZTEILLISTE / DIGIT POWER	± 1° ± 30' ± 20' ± 10'				6g 6H	0.3 x 45°
		A TORNIO IN LEGHE DI ALLUMINIO LA PRESSIONE NEL PRESINTE DEVE ESSERE CON INVECIO DI RIPRODUZIONE PARZIALE O TOTALE				QUANTITA'	RIFERIMENTO DISEGNO
		PESO KG.				CODICE 126990810	



WWW.TRADITIONALTOOL.COM