

OPERATION MANUAL – SPARE PARTS LIST

SP4119/4132

PNEUMATIC STEEL STRAPPING TOOL SEAL JOINT



CE

READ ALL INSTRUCTIONS BEFORE OPERATING THE TOOL

Ed.06/17

TABLE OF CONTENTS

- 1) Safety instructions
- 2) Technical data
- 3) Warranty and liability
- 4) Installation
- 5) Operating elements / adjustments
- 6) Operation
- 7) Servicing and cleaning
- 8) Troubleshooting
- 9) Layout
- 10) Spare parts list

1) SAFETY INSTRUCTIONS



READ THE OPERATING INSTRUCTION CAREFULLY



WHEN OPERATING THE TOOL, WEAR EYE, FACE AND HAND SAFETY PROTECTORS



GENERAL SAFETY INSTRUCTIONS :

The tool must be used by people properly trained in the use of the tool. Failure to follow the operating instructions or improper use could result in strap breakage, injuries, packages damage. Check tool daily, do not use tool with worn or damaged parts, and use original spare parts. Never modify any tool's part.

Do not put fingers, hands or other body parts between the strap and package during the cycle.

It is your full responsibility to review the joints made by your tool, a right seal control and adjustment training will be useful to check the seal quality in order to avoid severe injury. Never move goods with bad quality seals. Use only specific strap dispenser to dispense the strap. Keep your working area clean and always use the tool in good balance and safety conditions. Never use straps as a means of pulling or lifting goods.

To cut the straps always use proper safety strap cutter and keep other people and yourself at safe distance from strap, always stand to side of strap, away from direction that loosened strap end will go. Hold the upper strap portion and pay attention that the lower strap will snap forward away from you.

Improper operation, excessive tensioning, using straps not recommended and/or sharp corners on the package could result in a sudden loss of strap tension or in breakage that causing package / operator to fall and strap flying violently towards you. Use edge protectors if there are shaped corners, place the strap correctly around a properly positioned package, stand yourself by side of strap and keep people away, use the correct strap quality, width, thickness, and strength recommended in this manual.

Please preserve the booklet; as it is a part of the tool. This tool is manufactured without any substances which could be dangerous to health. National instructions must be observed for disposal of all the parts.



GENERAL SAFETY INSTRUCTIONS FOR COMPRESSED AIR:

Never operate this tool using a bottled air or other gas source. Always respect the air pressure range as shown in the operations manual, do not exceed. For all adjustments, repairs or cleaning of the tool, disconnect air supply. Always use dry, clean and lubricate compressed air.

2) TECHNICAL DATA

DESCRIPTION OF THE TOOL: The tool model SP4119/4132 is designed to strap packages with steel strap. The strap is fed around the package manually and inserted in the tool, as shown in the instructions, tensioned, cut and closed the strap with a seal joint

TOOL SIZE		
Length:		430mm – 16.9”
Width with hook:		260mm – 10.2”
Height:		310mm – 12.2”
Weight:		10.3 kgs – 22.6lbs

FEED REQUIR.		
Pressure Range:		5.5 -7 bar / 78 –99 psi
Air Comsumption:		12 L/s – 25 cuft/min

PERFORMANCES		
Max.Tension force:		9000N -6.5bar-92psi
Tensioning speed:		6mt/m
Sealing:		seal double notches
Joint strength:		80% of plastic strap strength*

* depends of strap quality

CHART OF TYPES

MODEL	STRAP	THICKNESS
SP4119-19mm- 9000N- 3B	R 850N/mm2	0.6mm 0.024” – 1mm 0.039”
	R 1100N/mm2	0.63mm 0.025” – 0.8mm 0.031”
	R 850N/mm2	0.6mm 0.024” – 1mm 0.039”
	R 1100N/mm2	0.63mm 0.025” – 0.8mm 0.031”
SP4132-32mm- 9000N- 3B	R 850N/mm2	0.6mm 0.024” – 1mm 0.039”
	R 1100N/mm2	0.63mm 0.025” – 0.8mm 0.031”

3) WARRANTY CONDITIONS AND LIABILITY

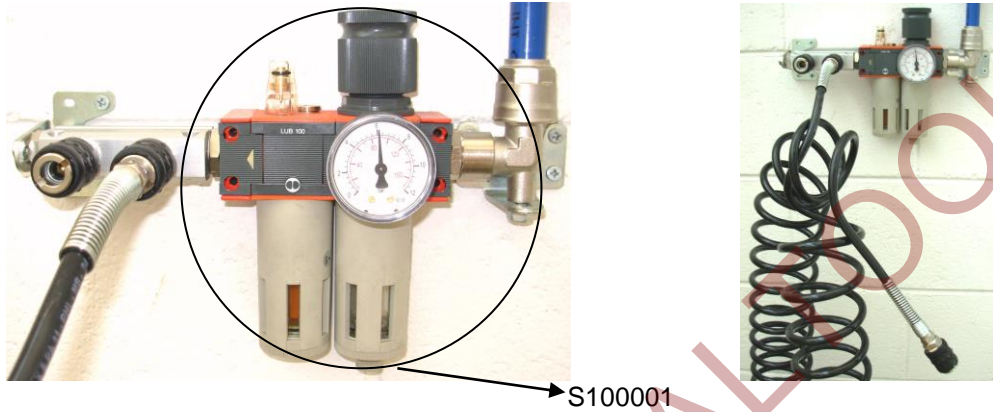
Polychem Corporation warrants all its tools and battery chargers during a period of 6 months from the shipping date document. Wear parts are warranted for 45 days, otherwise wear parts are excluded from regular warranty, wear parts are shown on spare parts list (in tool manual).

Warranty includes free replacement parts. The warranty is not valid in case of improper use, lack of maintenance, tampering, arbitrary modifications and reparations, use of non-original parts, disregard of instructions of the operation manual, or missing serial number. No compensation can be claimed for production shutdowns and for damages to people and objects due to tool defects. Polychem Corporation reserves the right to modify the tools and documentation without any obligation to update previous ones.

Polychem warrants all its batteries during a period of 120 days from the shipping date document. The manufacturer is committed to replace it with a free battery only when there are manufacturing defects that make it unfit for use.

4) INSTALLATION

Use always a dryer unit near the compressor and a filter-regulator-lubricator unit (Polychem code S100001) as close to air tool to avoid that water and dirtiness will be inlet in the valves or motors. Check daily the oil in the lubricator (we recommend oil type Synfilm32 Polychem code S200005). Connect the tool to air with quick connector $\frac{1}{4}$ " and use minimum 8mm or $\frac{3}{8}$ " internal diameter pipe; max length for flexible pipe 10mt between tool and regulator group. Check that your compressor / air distribution plant are able to supply the right air quantity as showed in the operation manual without loose pressure.



TOOL AIR CONNECTION



TOOL ACCESSORIES

5) OPERATING ELEMENTS AND ADJUSTMENTS



Adjusting strap tension (pic.A):

The maximum strap tension could be adjusted with a screwdriver, depending on strap quality and dimensions, turning the screw, as shown on pneumatic motor. Turning in clockwise the force will be reduced, in counter clockwise it will be increased – do not exceed in counter clockwise –

(A)



Tension motor adjustment force

Feedwheel gap adjustment (pic.B1-B2):

(B1)



(B2)



It is possible to adjust the height of the feed-wheel in order to change the teeth pressure on strap; unscrew the locking screw (**pic.B1**), turn the regulation screw, so that the standard height feed-wheel is 0.1-0.2mm (0.0039"-0.0078"). Turning clockwise decrease the height, turning counter clockwise increase the height (**pic.B2**), after the adjustment lock the screw

6) OPERATION

Make the strap slip into the seal and wind it up around the package; then make strap bottom pass a second time into the seal and bend it (**pic.C1**); push lever 1 to open the machine and load it with the strap already prepared (**pic.C2**), press lever 2 for close the machine and tensioning the strap and hold it until operation is over (**pic.C3**). Once strap tension operation is over, press lever 3 for close the seal and cut the strap (**pic.C4**); once sealing and cutting cycle is over, it is sufficient push the lever 1 for open the tool and releasing the strap (**pic.C5**). To check finally if the sealing is good and if the seal joint seal present of the marked recordings, this control is very important in order to understand the efficiency of the closing (**fig. C6**).

(C1)



(C2)



(C3)



(C4)



(C5)



(C6)



7) SERVICING - CLEANING

BEFORE ANY SERVICE ON THE TOOL, DISCONNECT IT FROM COMPRESSED AIR LINE



Clean by compressed air under roll and sliding plate as in the picture

8) TROUBLESHOOTING

PROBLEM
REMEDY
The tension of strap isn't enough
Check the air pressure (min.5,5 bar) Check if the filter / lubricator group is damaged or dirty. Check if the pneumatic motor isn't damaged or dirty (contact the after sale service). Check the power adjusting screw on the pneumatic motor
The feedwheel slides and milling on strap
Check if the feed wheel is dirty. Check if the feed wheel is damaged Adjust the gap between feed wheel and pressure button (around 0,2mm—0.008")
Too much tension force—adjust the motor power. Check on foot if the seal support points are not damaged or worn out. Check if the strap characteristics are right for the strapping tool and application Check if the seal characteristics are right for the strap and the application
The tensioned strap is sideways bended
Ad just the motor power—too much tension force. Check if the strap characteristics are right for the strapping tool
Hearing air leak
Should be necessary replace the gaskets (contact the after sale service)
The Joint efficently isn't enough
Check the air pressure. Check if there are some loosened parts into sealing group Check if in the sealing group there are some damaged parts — performing maintenance (contact the after sale service). Check if the strap characteristics are right for the strapping tool Check the seal quality
The strap cutting isn't correct
Check the air pressure (min.5,5 bar). Check if the strap characteristics are right for the strapping Tool. There are some damaged parts — performing maintenance (contact the after sale service)
The sealing / cutting phase is too slow and hearing air leak
Damaged piston gaskets into cylinder (contact the after sale service) - necessary replace them
The operation buttons are locked— the piston has difficul to open the tool

9) LAYOUT-SPARE PARTS LIST

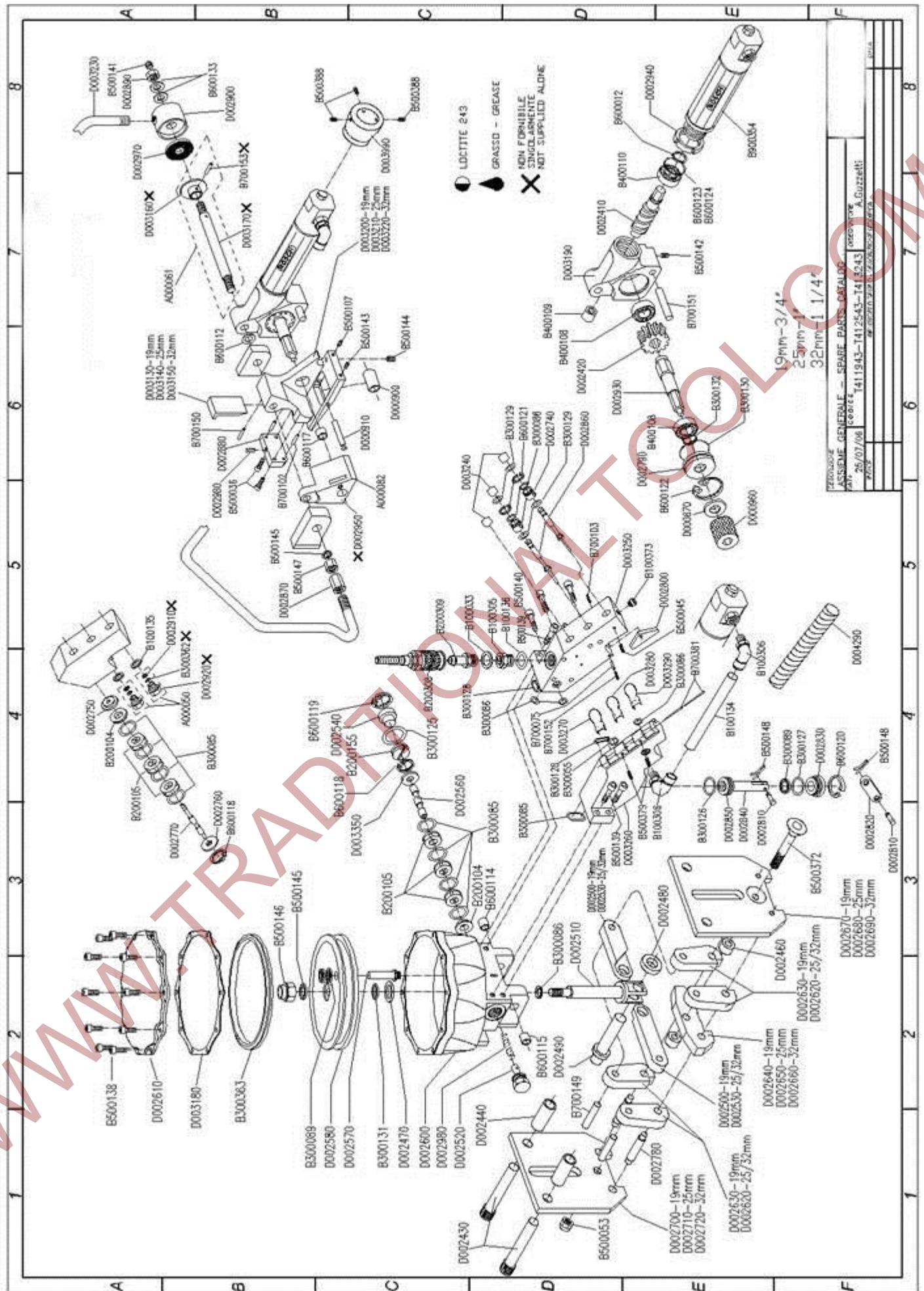
DESCRIZIONE	ITEM	DESCRIPTION	JDE PART #	Q.TA' Q.TY	
ASSIEME TAPPO VALVOLA	A000050	VALVE GUIDE ASSEMBLED	189912	2	
ASSIEME PERNO TENUTA	A000061	SHAFT ASSEMBLED	189913	1	
ASSIEME SUPPORTO RULLO	A000082	FEEDWHEEL COVER ASSEMBLED	189914	1	
GUARN.ALL. D11-1/4	B100033	ALLUM.GASKET 1/4"	189271	1	
TUBO POLIUR.8X10 GRIGIO	B100134	PIPE 8X10 (Lenght meters)	189916	0,2	*
GUARN. ALL.X RACCORDI M10	B100135	ALUM.GASKET M10	189917	2	
GUARN. ALL. D11-3/8"	B100136	ALUM.GASKET 3/8"	189779	1	
RID.CIL. 3/8-1/4 A4/Z (2151003)	B100305	AIR CONN. 3/8-1/4 A4/Z (2151003)	189780	1	
RAC GIR 10 1/4 RL31 (2L31013)	B100306	SWING ELBOW 10 1/4 RL31	189918	2	
TAPPO 1/8" S2610 CMZS261018	B100373	GRUB 1/8" S2610 CAMOZZI	189919	1	
LANT.458-33-19C CMZ4583319C	B200104	CAMOZZI 458-33/19C	189672	2	
LANT. 458-33-21C CMZ4583321C	B200105	CAMOZZI 458-33/21C	189674	6	
PIST.458-33/23C CMZ4583323C	B200155	CAMOZZI PISTON 458-33/23C	189681	1	
INN.RAPIDO 64MF D8/10 AH034403	B200308	FAST AIR CONN. ANI 64MF 8X10	189920	1	
IN.RAP.MASCHIO AN15A 1/4	B200309	FAST AIR MALE CONN. APAG261.14	189105	1	
O-RING 2043 (D11)	B300055	O-RING 2043	189296	1	
O-RING OR16X2	B300085	O-RING OR16X2	189673	9	
O-RING OR108 (D9)	B300086	O-RING OR108 (D9)	189667	6	*
GUARNIZIONE AIRZET PR12	B300089	GASKET AIRZET PR12	189863	3	*
O-RING OR2087 (D22)	B300125	O-RING OR2087 (D22)	189684	1	
O-RING OR3075 (D19)	B300126	O-RING OR3075 (D19)	189921	1	
O-RING OR2081 (D21)	B300127	O-RING OR2081 (D21)	189498	1	
O-RING OR2050 (D13)	B300128	O-RING OR2050	189922	2	
O-RING OR CAMOZ338/4 CMZ3384	B300129	O-RING OR CAMOZ338/4	189805	4	
O-RING OR3162 (D41)	B300130	O-RING OR3162 (D41)	189830	1	
ANELLO TEN. AIRZET PR15	B300131	GASKET AIRZET PR15	189923	1	*
PARAOLIO G 17X23X3	B300132	OIL GASKET G 17X23X3	189831	1	
GUARNIZIONE DOPPIO LABBRO	B300363	DOUBLE LIPS GASKET	189924	1	
CUSCINETTO 6003	B400108	BEARING 6003	189608	2	
CUSCINETTO A RULLI BK1012	B400109	ROLLER BEARING BK1012	189832	1	
CUSCINETTO 7202 BEP	B400110	BEARING 7202 BEP	189833	1	
VITE TCEI M5X12 UNI5931	B500036	SCREW M5X12	190032	2	
VITE STEI M4X5 UNI5927	B500045	SCREW M4X5	189276	1	
DADO AUTOBL.ALTO M8 DIN982 5S	B500053	SELFLOCK.NUT M8 H10 DIN982	189163	1	
VITE STEI M5X6 UNI5927	B500107	SCREW M5X6	189834	1	
VITE TCEI UNC 1/4-20X5/8 B18.3	B500138	SCREW UNC 1/4"X5/8"	189783	10	*
VITE TCEI M6X20 UNI5931	B500139	SCREW M6X20	189156	4	
VITE TCEI M5X30 UNI5931	B500140	SCREW M5X30	190036	3	
VITE STEI M10X1X10 UNI5923	B500141	SCREW M10X1X10	189925	1	
VITE STEI M8X1X10 UNI5923	B500142	SCREW M8X1X10	189835	1	
VITE STEI M6X6 UNI5927	B500143	SCREW M6X6	189819	1	
VITE STEI M8X1X14 UNI5923	B500144	SCREW M8X1X14	189836	1	
RONDELLA 10.5X20X2 UNI6592	B500145	WASHER M10	189837	2	*
DADO AUTOB M10X1 D.985 P/F 5S	B500146	SELFLOCK.NUT M10X1X10 ZINC	189784	1	*
DADO ES.M10X1 U.5588 P/F 6S	B500147	NUT M10X1X8	189926	1	
COPIGLIA 2X15	B500148	SPLITPIN 2X15	189927	2	
VITE TSPCE M8X50 UNI5933 10.9	B500372	SCREW M8X50	189928	1	

DESCRIZIONE	ITEM	DESCRIPTION	JDE PART #	Q.TA' Q.TY		
VITE STEI M4X5 UNI5923	B500379	SCREW M4X5	190044	2		
VITE STEI M5X5 UNI5927	B500388	SCREW M5X5	189744	3		
SEEGER PER ALBERI A10 U7435 R150	B600012	CIRCLIP A10 DIN471	189183	1		
ROND.SPESS .PS12X18X0.5 DIN988	B600112	WASHER PS12X18X0.5 DIN988	190050	1		
BOCCOLA BMC 1212	B600114	GUIDE SOCKET BM 1212	190051	1		
BOCCOLA BMC 1210	B600115	GUIDE SOCKET BM 1210	189930	1		
BOCCOLA BMC 141615	B600117	GUIDE SOCKET BMC 14x16x15	189611	1		
SEEGER INTJ20 DIN U.7437 R150	B600118	CIRCLIP INT J20 DIN 472	189693	2		
SEEGER INT.J22 U.7437 R150	B600119	CIRCLIP INT J22 DIN472	189683	1		
SEEGER INT. J29 U.7437 R150	B600120	CIRCLIP INT J29 DIN472	189931	1		
SEEGER INT. J12 U.7437 R150	B600121	CIRCLIP INT J12 DIN472	189807	2		
SEEGER INT. J47 U.7437 R150	B600122	CIRCLIP INT J47 DIN472	189840	1		
ROND.SPESS. PS 35X25X0.5	B600123	WASHER. PS 35X25X0.5	189841	2		
ROND.SPESS. PS 35X25X0.2	B600124	WASHER. PS 35X25X0.2	189842	3		
MOLLA TAZZA 20X10.2X0.8 D.2093	B600133	CUP WASHER 20X10.2X0.8	189932	2		
SPINA CILTMP 3X10 DIN6325 R220	B700075	PIN 3X10 DIN6325	189750	1		
SPINA ELAS 4X14 UNI6873	B700102	ELASTIC PIN 4X14 UNI6874	189875	2		
SPINA ELAS 3X10 UNI6873 R150	B700103	ELASTIC PIN 3X10 UNI6874	190143	1		
SPINA CIL.TMP 7X28 DIN6325	B700149	PIN 7X28 DIN6325	189933	2		*
SPINA ELAS 4X24 UNI6873 R150	B700150	ELASTIC PIN 4X24 UNI6874	189934	1		
SPINA CIL.TMP 10X60DIN6325 R220	B700151	PIN 10X60DIN6325	189843	1		
SPINA ELAS. 3X8 UNI6873 R150	B700152	ELASTIC PIN. 3X8 UNI6874	189935	1		
SPINA CIL.TMP. 3X45 DIN6325 R220	B700381	PIN 3X45 DIN6325	189936	2		
MOTORE PNEUM.BOSCH 0607951447	B900354	PNEUMATIC MOTOR	189618	1		
DISTANZIALE RULLO	D000870	FEEDWHEEL SPACER	189846	1		
RULLINO DI CONTRASTO	D000900	ROLLER	190127	1	§	
PERNO RULLINO	D000910	ROLLER PIN	189770	1		
RULLO TRASCINAMENTO	D000960	FEEDWHEEL	190128	1	§	*
VITE SENZA FINE	D002410	WORM GEAR	189850	1		
CORONA DENTATA	D002420	CROWN	189851	1		
PERNO DI FISSAGGIO MORSETTIERA	D002430	LOCKING PIN	189657	2		*
DISTANZIALE PIASTRE	D002440	SPACER	189658	2		
DISTANZIALE MORSETTI	D002460	JAWS SPACER	189788	2		
DISTANZIALE PERNO PISTONE	D002470	PISTON SHAFT WASHER	189937	1		
DISTANZIALE	D002480	SPACER	189938	1		
PERNO SPINGICESOIA	D002490	CUTTER SHAFT	189664	1		
MAGLIA COLLEGAMENTO 19mm	D002500	LINKER 19mm	189939	2		
PERNO PISTONE	D002510	PISTON SHAFT	189666	1		
SPINGIMOLLA VALVOLA	D002520	VALVE SPRING SUPPORT	189685	1		
MAGLIA COLLEGAMENTO 25/32mm	D002530	LINKER 25/32mm	189940	2		
CHIUSURA VALVOLA	D002540	VALVE CLOSER	189682	1		
PISTONE VALVOLA	D002560	VALVE PISTON	189675	1		
RACCORDO ARIA CILINDRO	D002570	CILINDER AIR CONNECTION	189941	1		
PISTONE	D002580	PISTON	189942	1		
CILINDRO	D002600	CILINDER	189943	1		
COPERCHIO	D002610	COVER	189944	1		
MORSETTO 25/32mm	D002620	JAW 25/32mm	189945	4		
MORSETTO 19mm	D002630	JAW 19mm 3/4"	189946	4		
INCUDINE 19mm	D002640	ANVIL 19mm 3/4"	189947	1		
INCUDINE 25mm	D002650	ANVIL 25mm 1"	X	1		
INCUDINE 32mm	D002660	ANVIL 32mm 1"-1/4	189948	1		
PIASTRA ANTERIORE 19mm	D002670	FRONT PLATE 19mm 3/4"	189949	1		

DESCRIZIONE	ITEM	DESCRIPTION	JDE PART #	Q.TA' Q.TY		
PIASTRA ANTERIORE 25mm	D002680	FRONT PLATE 25mm 1"	X	1		
PIASTRA ANTERIORE 32mm	D002690	FRONT PLATE 32mm 1"-1/4	189665	1		
PIASTRA POSTERIORE 19mm	D002700	REAR PLATE 19mm 3/4"	189950	1		
PIASTRA POSTERIORE 25mm	D002710	REAR PLATE 25mm 1"	X	1		
PIASTRA POSTERIORE 32mm	D002720	REAR PLATE 32mm 1" 1/4	189951	1		
LANTERNA VALVOLA	D002740	VALVE SECTOR	189806	2		
BASE VALVOLA	D002750	VALVE BASE	189952	1		
GUIDA INFERIORE VALVOLA	D002760	LOWER GUIDE VALVE	189953	1		
STELO VALVOLA	D002770	VALVE SHAFT	189954	1		
PERNO ROTAZIONE MORSETTI	D002780	JAWS PIN	189694	2		*
SUPPORTO CUSCINETTO RIDUTTORE	D002790	GEARBOX BEARING SUPPORT	189852	1		
BILANCERE VALVOLA	D002800	VALVE ACTUATOR	189955	1		
PERNO PISTONE	D002810	PISTON PIN	189956	2		
MAGLIA PERNO	D002820	PIN LINK	189957	1		
GUIDA PISTONE	D002830	PISTON GUIDE	189958	1		
STELO PISTONE ALZO	D002840	PISTON SHAFT	189959	1		
PISTONE	D002850	PISTON	189960	1		
STELO VALVOLA	D002860	VALVE SHAFT	189804	2		
DADO	D002870	NUT	189961	1		
SUPPORTO CESOIA	D002880	CUTTER SUPPORT	189962	1		
DADO	D002890	NUT	189963	1		
PIANO FRIZIONE GANCIO	D002900	HOOK FRICTION PLATE	189964	1		
ALBERO	D002930	FEEDWHEEL SHAFT	189609	1		
GHIERA	D002940	MOTOR BUSH	189620	1		
FRIZIONE	D002970	CLUTCH PLATE	189965	1		
MOLLA FILO 0.7X5X40	D002980	SPRING	189680	1		*
CESOIA 19mm	D003130	CUTTER 19mm - 3/4"	189768	1	§	*
CESOIA 25mm	D003140	CUTTER 25mm -1"	X	1	§	*
CESOIA 32mm	D003150	CUTTER 32mm- 1"-1/4	189769	1	§	*
GUARNIZIONE CILINDRO SP4119/4132	D003180	CILINDER GASKET	189966	1		*
CORPO RIDUTTORE	D003190	GEARBOX BODY	189619	1		
PIEDE GUIDA 19mm	D003200	FOOT 19mm 3/4"	189967	1		
PIEDE GUIDA 25mm	D003210	FOOT 25mm 1"	X	1		
PIEDE GUIDA 32mm	D003220	FOOT 32mm 1"-1/4	189968	1		
SUPPORTO SOSPENSIONE	D003230	SUSPENSION HOOK	189969	1		
PRESSORE	D003240	PUSHER	189970	3		
CORPO PULSANTIERA DESTRO	D003250	RIGHT BUTTONS BODY	189971	1		
CORPO PULSANTIERA SINISTRO	D003260	LEFT BUTTONS BODY	189972	1		
LEVA AZION.APERTURA	D003270	OPENING START LEVER	189973	1		
LEVA AZION.TENSIONE	D003280	TENSION START LEVER	189974	1		
LEVA AZION.SIGILLATURA	D003290	SEALING LEVER	189975	1		
ANELLO VALVOLA	D003350	VALVE RING 8.2X20X1	189976	1		
GUIDA IMPUGNATURA	D003990	HANDLE GUIDE	189977	1		
SPIRALE PROTEGGI TUBO	D004290	AIR PIPE PROTECTION	189978	1		

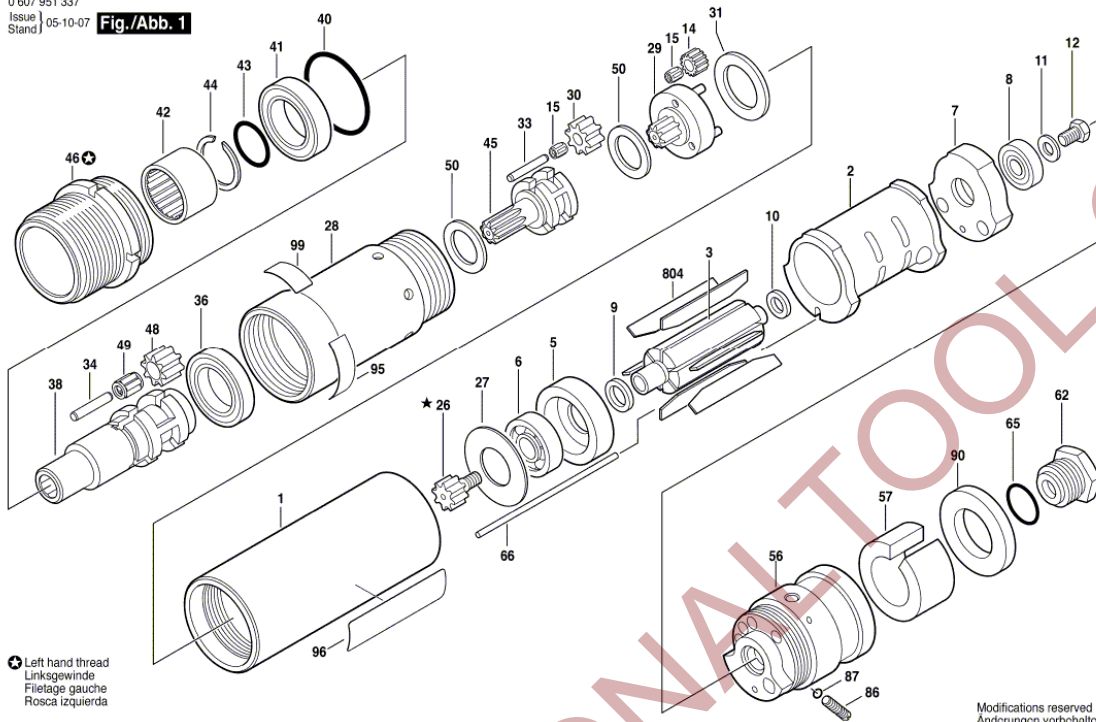
COMPONENTE DESTINATO AD USURA	§	WEARING PART
RICAMBIO CONSIGLIATO A STOCK	*	PART THAT SHOULD BE STOCKED

WWW.TRADITIONALTOOL.COM





0 607 951 337
Issue | 05-10-07
Stand | Fig./Abb. 1



⊖ Left hand thread
Linksgewinde
Filetage gauche
Rosca izquierda

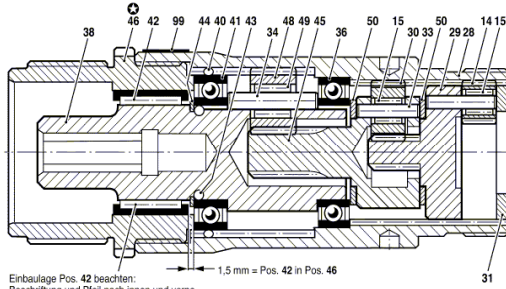
★ secure with Loctite 270
mit Loctite 270 sichern

Modifications reserved
Änderungen vorbehalten
Modifications réservées
Salvo modificaciones

**BOSCH 0 607 951 447 –
TENSION MOTOR
SP4119/4132**

0 607 951 337
Issue) 05-10-07
Stand)

Fig./Abb. S



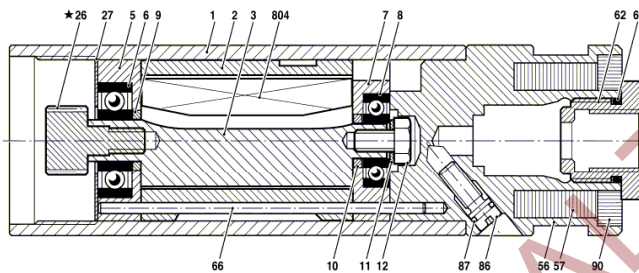
Dimensions in mm
Maße in mm
Cotes en mm
Medidas en mm

Torque values
Anzugsmomente
Couples de serrage
Pares de apriete
Pos. 12 = 3,0 - 3,5 Nm
26 = 4,0 - 5,0 Nm
28 = 40,0 - 48,0 Nm
46 = 40,0 - 44,0 Nm
56 = 15,0 - 18,0 Nm

★ secure with Loctite 270
mit Loctite 270 sichern

⊖ left hand thread
Linksgewinde
Filetage gauche
Rosca izquierda

Modifications reserved
Änderungen vorbehalten
Modifications réservées
Salvo modificaciones



Pos.	Menge	Bestell Nr.
1	1	3 600 760 114
2	1	3 604 090 062
3	1	3 604 220 025
5	1	3 605 700 005
6	1	3 600 905 039
7	1	3 605 700 006
8	1	3 600 905 148
9	1	2 600 202 013
10	1	2 600 202 014
11	1	2 916 011 012
12	1	2 911 061 150
14	3	3 606 316 000
15	6	3 600 913 000
26	1	3 606 300 002
27	1	3 600 101 001
28	1	3 606 334 091
29	1	3 606 337 071
30	3	3 606 316 001
34	2	3 603 201 044
36	1	3 600 900 016
38	1	3 606 337 208
40	1	2 600 210 024
41	1	3 600 905 145
42	1	3 600 910 018
43	1	4 900 210 113
44	1	2 916 650 011
45	1	3 606 337 105
46	1	3 603 344 055
48	3	3 606 316 053
49	3	3 600 903 001
50	2	3 600 101 024
56	1	3 605 190 191
57	1	3 601 010 002
62	1	3 603 458 019
65	1	3 600 210 036
66	1	3 604 710 051
86	1	3 603 436 032
87	1	3 600 210 015
90	1	3 600 106 002
95	1	3 601 106 047
96	1	3 601 110 331
804	1	3 607 030 249

CE DECLARATION OF CONFORMITY

Polychem declares under own responsibility that the under mentioned machinery, to this declarations refers, is in conformity with following standard or standardised documents **98/37/EEC, EN292/1, EN292/2.....**

Polychem

**MODEL:
SP4119/4132**



MACHINE TYPE:

PNEUMATIC STEEL STRAPPING TOOL SEAL JOINT