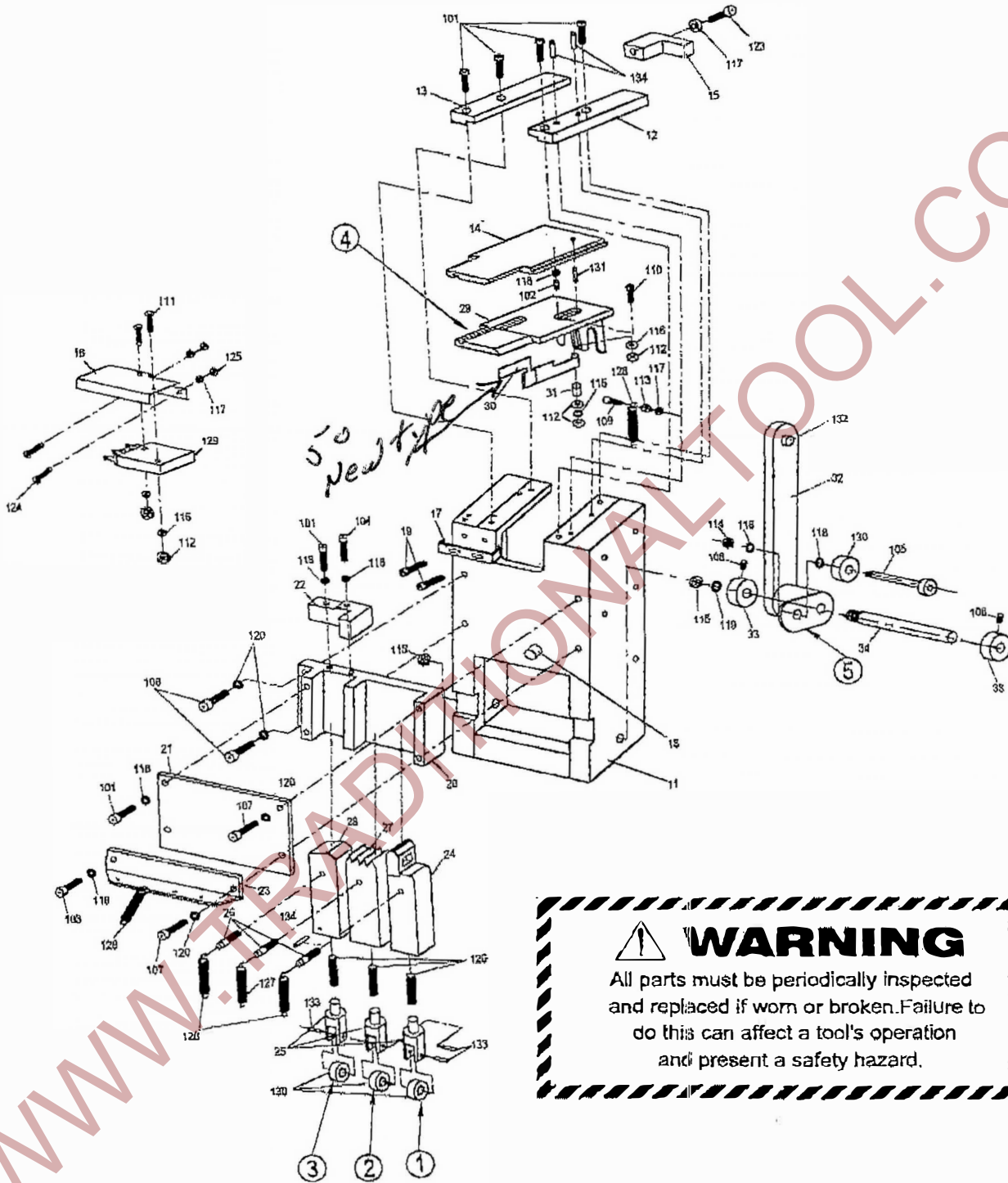


PARTS LIST AND EXPLODED VIEW

<u>FIGURE#</u>	<u>ASSEMBLY</u>	<u>PAGE</u>
FIGURE 1	WELDING COMPONENTS	26-27
FIGURE 2	DRIVE AND CAM ASSEMBLIES	28-29
FIGURE 3-2	STRAP FEED/TENSION ASSEMBLY	30-31
FIGURE 4-1	TENSION ADJUSTMENT – Standard Machine	32-33
FIGURE 4-2	TENSION ADJUSTMENT – (Optional Electric Tension)	32-33
FIGURE 4-3	TRANSMISSION BRACKET ASSEMBLY	34-35
FIGURE 5	HOT-KNIFE AND TENSION LEVER ASSEMBLIES	36-37
FIGURE 6-1	CABINET COMPONENTS (P-725 MACHINE)	38-39
FIGURE 6-2	CABINET COMPONENTS (P-625 MACHINE)	40-41
FIGURE 7-1	DISPENSER ASSEMBLY (P-725 MACHINE)	42-43
FIGURE 8-1	DISPENSER BRAKE ARM (P-725 MACHINE)	42-43
FIGURE 8-2	DISPENSER ASSEMBLY (P-625 MACHINE)	44-45
FIGURE 9-1	ELECTRICAL COMPONENTS (P-725 MACHINE)	46-47
FIGURE 9-2	ELECTRICAL COMPONENTS (P-625 MACHINE)	48-49
FIGURE 10	ELECT. CONTROL PANEL & CONTROL BOX ASSEMBLY	50-51
FIGURE 11-1	ELECTRICAL SCHEMATIC – Standard Machine	52
FIGURE 11-2	ELECTRICAL SCHEMATIC – (Optional Electric Tension)	53-54

PARTS LIST, FIGURE 1. WELDING COMPONENTS

KEY	QTY.	PART NO.	DESCRIPTION
1	1	4-01010	END GRIPPER UNIT
2	1	4-01020	WELDING CLAMP UNIT
3	1	4-01030	HOLDING GRIPPER UNIT
4	1	4-01040	SEPARATING PLATE UNIT
5	1	4-01050	SEPARATING ARM UNIT
11	1	4-01000-110	Main body block
12	1	4-01000-120	Guide plate, right hand side
13	1	4-01000-130	Guide plate, left had side
14	1	4-01000-140	Top cover holder
15	1	4-01000-150	Retainer, top cover holder
16	1	4-01000-161	Microswitch seat
17	1	4-01000-170	Microswitch spring plate
18	1	4-01000-180	Spring hook
19	2	4-01000-190	Screw
20	1	4-01000-200	Guide slot
21	1	4-01000-210	Guide plate
22	1	4-01000-220	L-type angle plate
23	1	4-01000-230	Spring hook plate
24	1	4-01010-240	End gripper
25	3	4-01010-250	Clevis
26	1	4-01010-260	Spring hook
27	1	4-01020-270	Welding clamp
28	1	4-01030-280	Holding gripper
29	1	4-01040-290	Separating plate
30	1	4-01040-301	Microswitch detector lever (out)
31	1	4-01040-310	Brass bushing
32	1	4-01050-320	Separating arm
33	2	4-01050-330	Sleeve, separating arm pin
34	1	4-01050-340	Separating arm pin
101	7	200A05012	Socket head cap screw, M5x12
102	1	200A05006	Socket head cap screw, M5x6
103	1	200A05016	Socket head cap screw, M5x16
104	1	200A05020	Socket head cap screw, M5x20
105	1	200A05025	Socket head cap screw, M5x25
106	2	200A06025	Socket head cap screw, M6x25
107	2	200A06050	Socket head cap screw, M6x50
108	2	200G05008	Socket head cap screw, M5x8
109	1	200E04015	Phillips head machine screw, M4x15
110	1	200F03020	Flat head cap screw, M3x20
111	3	200E03015	Phillips head machine screw, M3x15
112	4	201A03	Hex nut, M3
113	1	201A04	Hex nut, M4
114	1	201A05	Hex nut, M5
115	2	201A08	Hex nut, M8
116	6	202B03	Lock washer, M3
117	5	202B04	Lock washer, M4
118	7	202B05	Lock washer, M5
119	1	202B08	Lock washer, M8
120	5	202B06	Lock washer, M6
123	1	200A04016	Socket head cap screw, M4x16
124	3	200E04008	Phillips head machine screw, M4x8
125	3	202A0410	Plain washer, M4x10
126	3	2212310042	Compression spring 2.3x10x42
127	1	2201210020	Tension spring, short
128	4	2201011022	Tension spring, long
129	1	104G001	Microswitch, heavy (LS-1)
130	4	210A0635	Ball bearing, 635ZZ
131	1	211A0414	Spring pin, 4 dia. x 14
132	1	211A0520	Spring pin, 5 dia. x 20
133	3	211A0514	Spring pin, 5 dia. x 14
134	5	211A0318	Spring pin, 3 dia. x 18



WARNING
 All parts must be periodically inspected and replaced if worn or broken. Failure to do this can affect a tool's operation and present a safety hazard.

FIGURE 1. WELDING COMPONENTS

PARTS LIST, FIGURE 2. DRIVE AND CAM ASSEMBLIES

KEY	QTY.	PART NO.	DESCRIPTION
1	1	4-02010	REDUCTION GEAR UNIT
2	1	4-02020	CAM UNIT
11	1	4-02010-110	Pulley
12	1	4-02010-120	Reduction gear
14	1	4-02020-140	Cam shaft
15	1	4-02020-150	Cam.
16	1	4-02020-160	Cam
17	1	4-02020-170	Cam
18	1	4-02020-180	Cam
19	1	4-02020-190	Cam
20	1	4-02020-201	Cam
21	1	4-02020-211	Bearing bracket (aluminum)
22	1	4-02020-221	Bearing bracket (aluminum)
23	1	4-02000-230	Motor pulley
24	1	4-02000-240	Motor fan
27	1	4-02000-270	Plate
101	10	200E04008	Phillips head machine screw, M4x8
102	10	202B04	Lock washer, M4
103	2	201A10	Hex nut, M10
104	1	202B10	Lock washer, M10
105	2	201A03	Hex nut, M3
106	4	200C06025	Hex bolt, M6x25
107	8	202A0613	Plain washer, M6x13
108	12	202B06	Lock washer, M6
109	8	201A06	Hex nut, M6
110	4	200C06020	Hex bolt, M6x20
112	1	200G06010	Socket head set screw, M6x10
113	2	200A05012	Socket head set screw, M5x12
114	3	200A06020	Socket head set screw, M6x20
115	1	200A06045	Socket head set screw, M6x45
116	2	200E03030	Phillips head machine screw, M3x30
118	2	202B05	Lock washer, M5
119	4	202B03	Lock washer, M3
120	4	202A061620	Plain washer, M6x16x2
121	2	212AS17	Ring, S-17
122	2	210A6201	Clutch ball bearing, 6201ZZ
123	1	101A1160018	Motor, 1 phase, 110V, 60 Hz.
124	2	210A6003	Ball bearing, 6003ZZ
125	1	202G121604	Spacer 12x16x4
126	1	202E121702	Shim M12x17x0.2
127	1	213A0505014	Key, 5x5x14
128	1	213A0505080	Key, 5x5x80
129	2	213A0505016	Key, 5x5x16
130	2	202F172906	Plastic washer, M17x29x6
131	2	202F172910	Plastic washer, M17x29x10
132	2	202F172912	Plastic washer, M17x29x12
133	1	202G121608	Spacer 12x16x8
135	1	226K163	Oil cover
136	1	227A02020	Rubber washer (ϕ 20)
137	1	102F06A	Magnetic clutch CD-F-0.6A
138	2	104G012	Microswitch heavy (LS3, 5)

⚠ WARNING
 All parts must be periodically inspected and replaced if worn or broken. Failure to do this can affect a tool's operation and present a safety hazard.

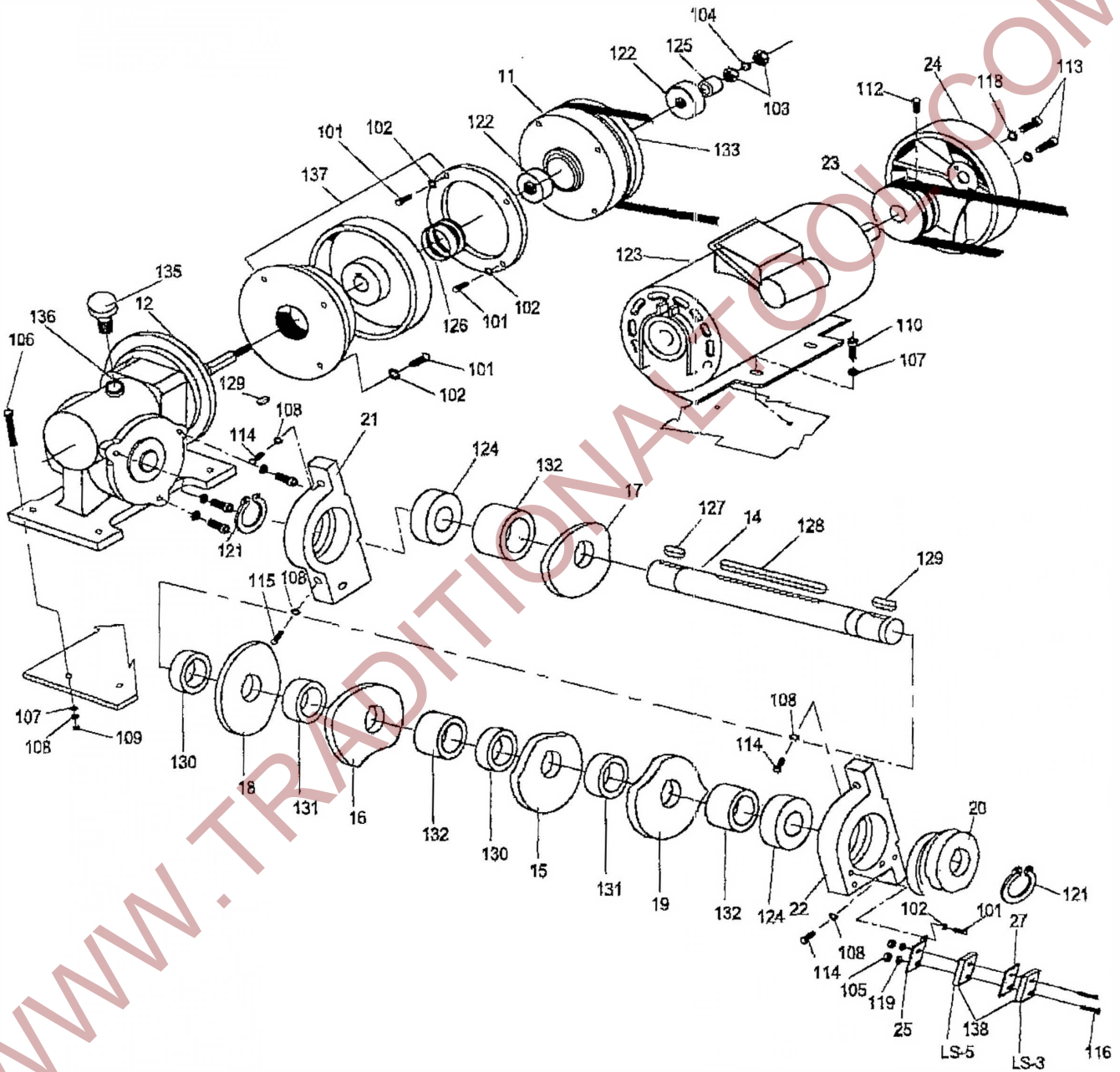


FIGURE 2. DRIVE AND CAM ASSEMBLY

PARTS LIST, FIGURE 3-2. STRAP FEED/TENSION ASSEMBLY

KEY	QTY.	PART NO.	DESCRIPTION
1	1	4-03010	BEARING HOUSING, UPPER UNIT
2	1	4-03020	BEARING HOUSING, LOWER UNIT
11	1	4-03010-110	Roller shaft 15x85
12	1	4-03010-120	Roller shaft 15x66
13	1	4-03010-130	Bearing housing, upper
14-1	2	4-03010-140	Steel roller
14-2	2	4-03010-142	Steel roller
15	2	4-03010-150	Nylon gear, 20 teeth
16	1	4-03010-160	Gear
17	2	4-03010-170	Strap guide
18	1	4-03010-180	Strap guide
20	1	4-03020-200	Pin
21	1	4-03020-210	Roller shaft, 10x49
22	1	4-03020-220	Roller shaft, 15x85
23	1	4-03020-231	Tightness adjustment shaft 15x285
24	1	4-03020-240	Bearing housing, lower
25	1	4-03020-250	Nylon gear, 40 teeth
27	1	4-03020-270	Steel gear
28	1	4-03020-280	Plastic roller
29	1	4-03020-290	Strap guide
30	1	4-03020-300	Strap guide
31	1	4-03020-310	Strap guide
32	11	4-03020-320	Strap guide
33	1	4-03020-330	Strap guide
35	1	4-03020-350	Magnet
100	1	200E03016	Phillips head machine screw, M3x16
101	6	200E04008	Phillips head machine screw, M4x8
103	12	200F04008	Flat head cap screw, M4x8
105	1	200A05012	Socket head cap screw, M5x12
106	2	200G05008	Socket head set screw, M5x8
108	4	202B06	Lock washer, M6
109	4	200A06020	Socket head cap screw, M6x20
110	1	104Y002	Magnetic sensor SK3-X
111	7	202B04	Lock washer, M4
112	7	202A0410	Plain washer, M4x10
114	1	202B05	Lock washer, M5
115	1	202A0512	Plain washer, M5x12
116	1	202A062120	Plain washer, M6x21
117	1	200G06008	Socket head set screw, M6x8
119	2	201A04	Hex nut, M4
120	1	200E04020	Phillips head machine screw, M4x20
121	1	202B03	Lock washer, M3
122	1	202A0308	Plain washer, M3x8
123	8	210A6002	Ball bearing, 6002ZZ
124	7	202F152205	Plastic washer, M15x22x5
125	6	202F172910	Plastic washer, M17x29x10
126	10	202F152204	Plastic washer, M15x22x4
127	2	213A0505012	Key, 5x5x12
128	6	213A0505016	Key, 5x5x16
129	1	213A0505030	Key, 5x5x30
130	9	212AS15	Ring, S-15
131	2	212AS10	Ring, S-10
137	1	213A0505010	Key, 5x5x10

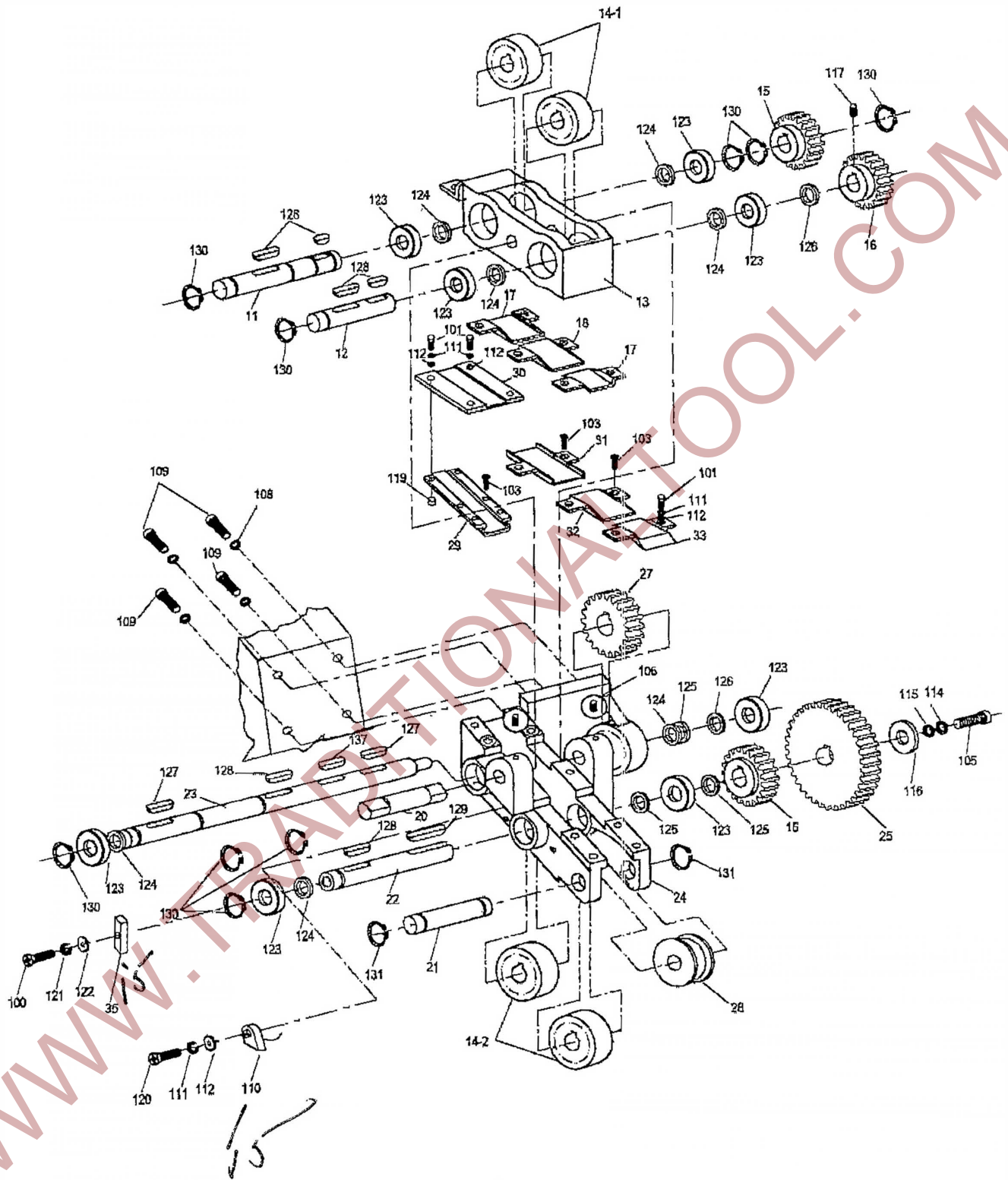


FIGURE 3. FEED/TENSION ASSEMBLY

PARTS LIST, FIGURE 4-1. TENSION ADJUSTMENT - STANDARD

KEY	QTY.	PART NO.	DESCRIPTION
1	1	4-04010	TIGHTNESS DIRECTOR UNIT
12	2	4-04000-120	Spring guide
13	1	4-04010-130	Tightness adjustment cover
14	1	4-04010-140	Tightness adjustment sleeve
15	1	4-04010-150	Tightness adjustment nut
16	1	4-04010-160	Tightness director
17	1	4-04000-170	Tightening pulley
18	1	4-04000-180	Tightening pulley
19	1	4-04000-190	Tightening pulley
20	2	4-04000-200	Clutch disc
35	1	4-04000-350	Plastic sleeve
101	2	200A06020	Socket head cap screw, M6x20
116	1	202A06120	Plain washer, M6x21x2
118	1	212AR32	Ring, R-32
120	1	2214239052	Compression spring, 4.2x39x52
123	4	210A6002	Ball bearing, 6002ZZ
125	1	210A6000	Ball bearing, 6000ZZ
131	2	200A0508	Socket head cap screw, M5x8

PARTS LIST, FIGURE 4-2. TENSION ADJUSTMENT – Optional Electric Tension

KEY	QTY.	PART NO.	DESCRIPTION
1	1	4-04310	ELECTRON TENSION ADJ.UNIT
12	2	4-04000-120	Spring guide
17	1	4-04000-170	Tightening pulley
38	1	4-04310-380	Adjustment nut
39	1	4-04310-390	Attractive plate
110	1	200G06008	Socket head set screw, M6x8
114	2	202A152105	Plain washer, M15x25x0.5
117	2	202A152110	Plain washer, M15x21x1.0
118	1	212AR32	Ring, R-32
120	1	2213039062	Compression spring, 3.0x39x32
123	4	210A6002	Ball bearing, 6002ZZ
133	1	102E15	Magnet clutch CD-E-1.5

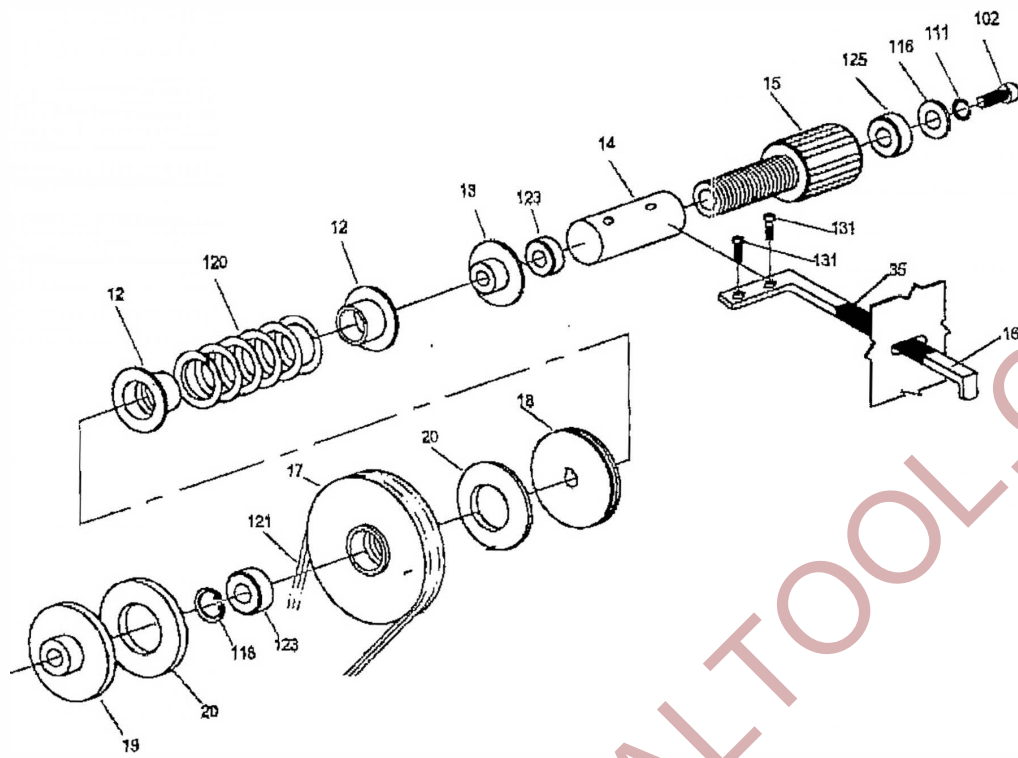


FIGURE 4-1. TENSION ADJUSTMENT - MECHANICAL TENSION

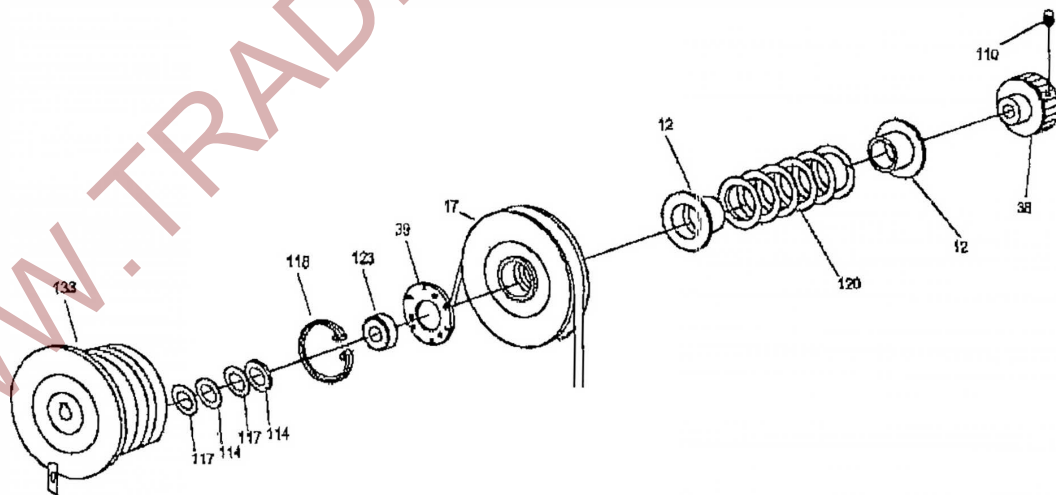


FIGURE 4-2. TENSION ADJUSTMENT - ELECTRIC TENSION

PARTS LIST, FIGURE 4-3. TRANSMISSION BRACKET ASSEMBLY

<u>KEY</u>	<u>QTY.</u>	<u>PART NO.</u>	<u>DESCRIPTION</u>
3	1	4-04030	TRANSMISSION BRACKET UNIT
27	1	4-04030-270	Transmission bracket pin
28	1	4-04030-281	Transmission bracket shaft 15x123
29	1	4-04030-290	Transmission seat
30	1	4-04030-300	Transmission bracket
31	1	4-04030-311	Pulley
32	1	4-04030-321	Pulley
102	2	200A106016	Socket head cap screw, M6x16
103	1	200C06070	Hex bolt, M6x70
104	2	200G06010	Socket head set screw, M6x10
105	1	200G06006	Socket head set screw, M6x6
106	5	201A06	Hex nut, M6
111	6	202B06	Lock washer, M6
112	7	202A061620	Plain washer, M6x16x2
113	4	202A0613	Plain washer, M6x13
121	2	214AK019	V-Belt, k-19
122	1	214AM030	V-Belt, M30
123	4	210A6002	Ball bearing, 6002ZZ
126	2	212AS15	Ring, S-15

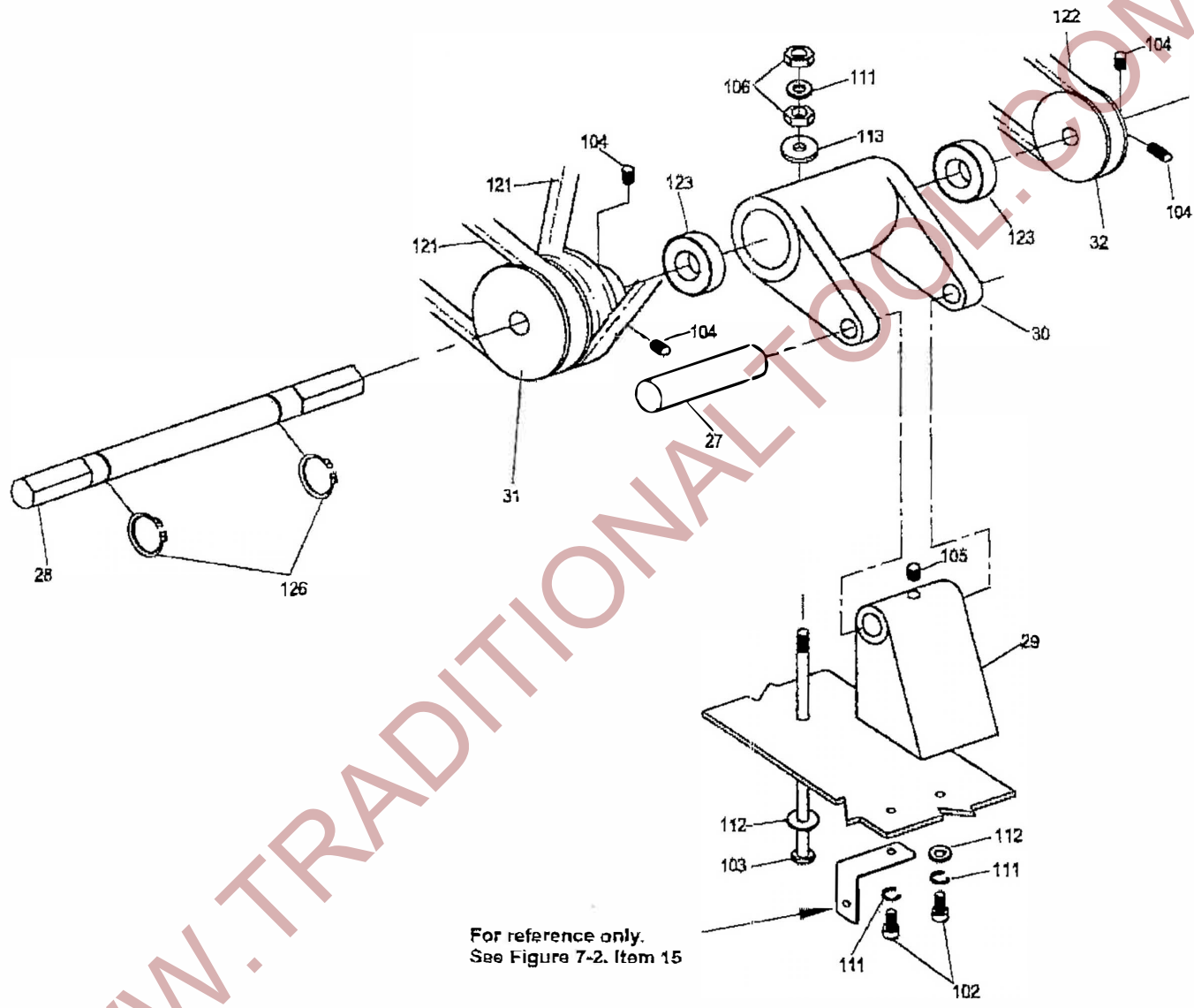


FIGURE 4-3. TRANSMISSION BRACKET ASSEMBLY

PARTS LIST, FIGURE 5. HOT-KNIFE AND TENSION LEVER ASSEMBLIES

KEY	QTY.	PART NO.	DESCRIPTION
1	1	4-05010	HEATER ARM UNIT
2	1	4-05020	HEATER HEAD UNIT
3	1	4-05030	TENSION LEVER UNIT
4	1	4-05040	STRAP GUIDE UNIT, ENTRY
5	1	4-05050	STRAP GUIDE UNIT, EXIT
11	1	4-05010-110	Heater arm side plate
12	1	4-05010-120	Heater arm
13	1	4-05010-130	Heater arm screw
14	1	4-05020-140	Heater blade holder
15	1	4-05020-150	Instant heating heater plate
16	1	4-05030-160	Adjustable nut
17	1	4-05030-170	Tension lever
18	1	4-05000-180	Solenoid shaft assembly
21	4	4-05000-210	Spring cover
22	1	4-05000-220	Bracket
23	1	4-05000-230	Feed back arm screw
26	1	4-05050-260	Strap guide, exit
27	1	4-05050-270	Strap guide adjuster, exit
28	1	4-05050-280	Guide nut, M4
29	1	4-05040-290	Strap guide adjuster, entry
30	1	4-05040-300	Strap guide, entry
31	1	4-05030-310	Cap sleeve
101	1	200C06090	Hex bolt, M6x90
102	1	200C030100	Hex bolt, M6x100
103	1	200A06050	Socket head cap screw, M6x50
104	1	200E04016	Phillips head machine screw, M4x16
105	5	200A05012	Socket head cap screw, M5x12
106	9	202B05	Lock washer, M5
107	2	201A04	Hex nut, M4
108	5	201A05	Hex nut, M5
109	2	202B04	Lock washer, M4
110	13	201A06	Hex nut, M6
111	9	202B06	Lock washer, M6
112	1	201A08	Hex nut, M8
113	2	202B08	Lock washer, M8
114	1	200E0415	Phillips head machine screw, M4x15
115	2	200A04025	Socket head cap screw, M4x25
116	8	200C05012	Hex bolt, M5x12
117	9	202A0512	Plain washer, M5x12
118	2	202A0613	Plain washer, M6x13
119	7	202A0409	Plain washer, M4x9
120	4	202A061620	Plain washer, M6x16x2
121	1	202A062120	Plain washer, M6x21x2
122	1	2200505006	Heater spring, 0.5x0.5x6.5
123	1	2201011022	Tension spring, long, 1x10.8x22
124	2	2211012045	Compression spring, 1x12x45
125	2	210A0635	Ball bearing, 635ZZ
126	1	2214024039	Compression spring, 4x24x39
127	1	212AE12	Ring, E-12
129	1	2211610026	Compression spring, 1.6x10x26
130	2	211A0440	Spring pin, 4 dia.x40
131	1	211A0520	Spring pin, 5 dia.x20
132	1	103T024-1	Solenoid, 24V
133	1	227A02016	Rubber washer (φ16)
134	4	200C04010	Hex bolt, M4x10
135	4	200M05012	Hex bolt with washer, M5x12

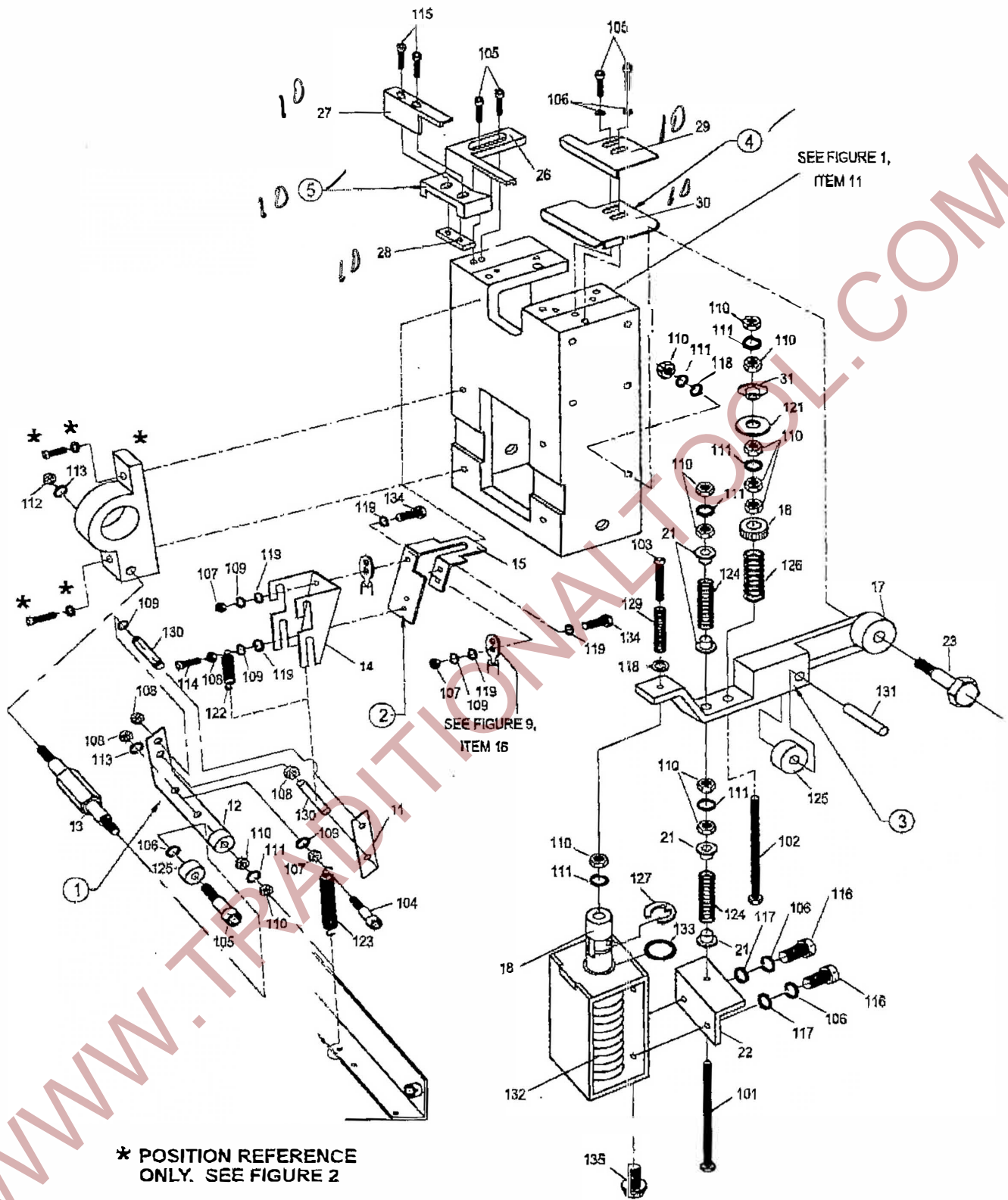


FIGURE 5. HOT-KNIFE AND TENSION LEVER ASSEMBLIES

PARTS LIST, FIGURE 6-1. CABINET COMPONENTS (P-725 MACHINE)

KEY	QTY.	PART NO.	DESCRIPTION
1	1	4-06010	PLASTIC ROLLER BRACKET UNIT
11	1	4-06500-110	Body
12	1	4-06000-120	Door, right hand
13	1	4-06000-130	Door, left hand
14	4	4-06000-140	Door magnet
15	1	4-06000-150	Plastic package stop
16	1	4-06000-161	Stainless steel top cover
17	4	4-06000-171	Wheel, Swivel with lock
18	2	4-06000-180	Door holder
19	1	4-06000-191	Sustaining plate
20	1	4-06000-200	Guide plate
21	1	4-06400-210	Hinge
23	2	4-06000-230	Top cover screw
24	1	4-06010-240	Plastic roller
25	1	4-06010-250	Roller pin
26	1	4-06010-260	Roller frame
101	25	200C06012	Hex bolt, M6x12
102	21	202B06	Lock washer, M6
103	41	202A0613	Plain washer, M6x13
104	16	201A06	Hex nut, M6
105	4	200C06020	Hex bolt, M6x20
107	2	200A06020	Socket head cap screw, M6x20
109	2	200E04012	Phillips head machine screw, M4x12
110	10	202B04	Lock washer, M4
111	2	201A04	Hex nut, M4
112	8	200E04010	Phillips head machine screw, M4x10
113	12	202A0408	Plain washer, M4x8
114	8	202A061620	Plain washer, M6x15x2
117	2	200A06012	Socket head cap screw, M6x12
118	1	118B180-2B1A	Cable
119	1	See Pages 50-51	Electrical controls
121	1	200F06020	Flat head cap screw, M6x20
123	2	201K06	Wing nut, M6

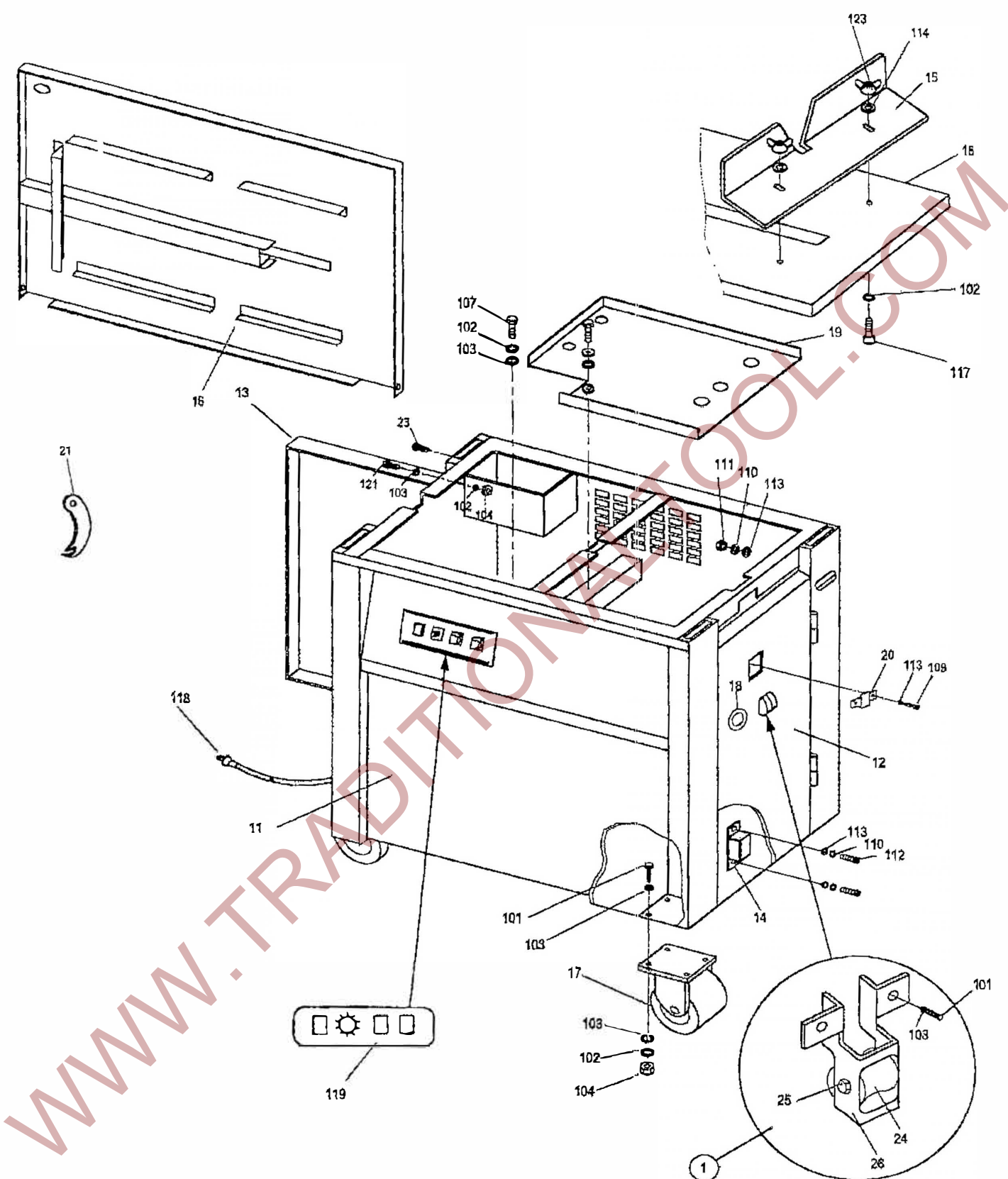


FIGURE 6-1. CABINET COMPONENTS (P-725)

PARTS LIST, FIGURE 6-2. CABINET COMPONENTS (P-625 MACHINE)

KEY	QTY.	PART NO.	DESCRIPTION
1	1	4-06010	PLASTIC ROLLER BRACKET UNIT
11	1	4-06400-110	Body
15	1	4-06000-151	Plastic package stop
16	1	4-06200-161	Stainless steel top cover
17-1	2	229D16075CH-GY	Wheel swivel 5/8"
17	2	229E16075CH-GY	Wheel swivel 5/8" with lock
19	1	4-06000-191	Sustaining plate
20	1	4-06000-200	Guide plate
21	1	4-06400-210	Hinge
23	2	4-06000-230	Top cover screw
24	1	4-06010-240	Plastic roller
25	1	4-06010-250	Roller pin
26	1	4-06010-260	Roller frame
30	4	4-06400-300	Leg, long
31	4	4-06400-310	Screw
32	4	4-06400-320	Plastic leg washer
33	4	4-06200-330	Plastic bracket
101	25	200C06012	Hex bolt, M6x12
102	21	202B06	Lock washer, M6
103	41	202A0613	Plain washer, M6x13
104	16	201A06	Hex nut, M6
105	4	200C06020	Hex bolt, M6x20
107	2	200A06020	Socket head cap screw, M6x20
109	2	200E04012	Phillips head machine screw, M4x12
110	10	202B04	Lock washer, M4
111	2	201A04	Hex nut, M4
113	12	202A0410	Plain washer, M4x10
114	2	202A061620	Plain washer, M6 (16mm O.D.)
117	2	200A06012	Socket head cap screw, M6x12
118	1	118B180-2B1A	Cable
121	1	200F06020	Flat head cap screw, M6x20
122	4	202A122515	Plain washer, M12x25x1.5
123	2	201K06	Wing nut, M6
124	4	201A12	Hex nut, M12
125	4	211A0318	Spring pin 3 dia. x 18
126	4	201A16	Hex nut, M16
127	1	See pages 50-51	Electrical Controls
128	4	4-06400-340	Tightness Screw

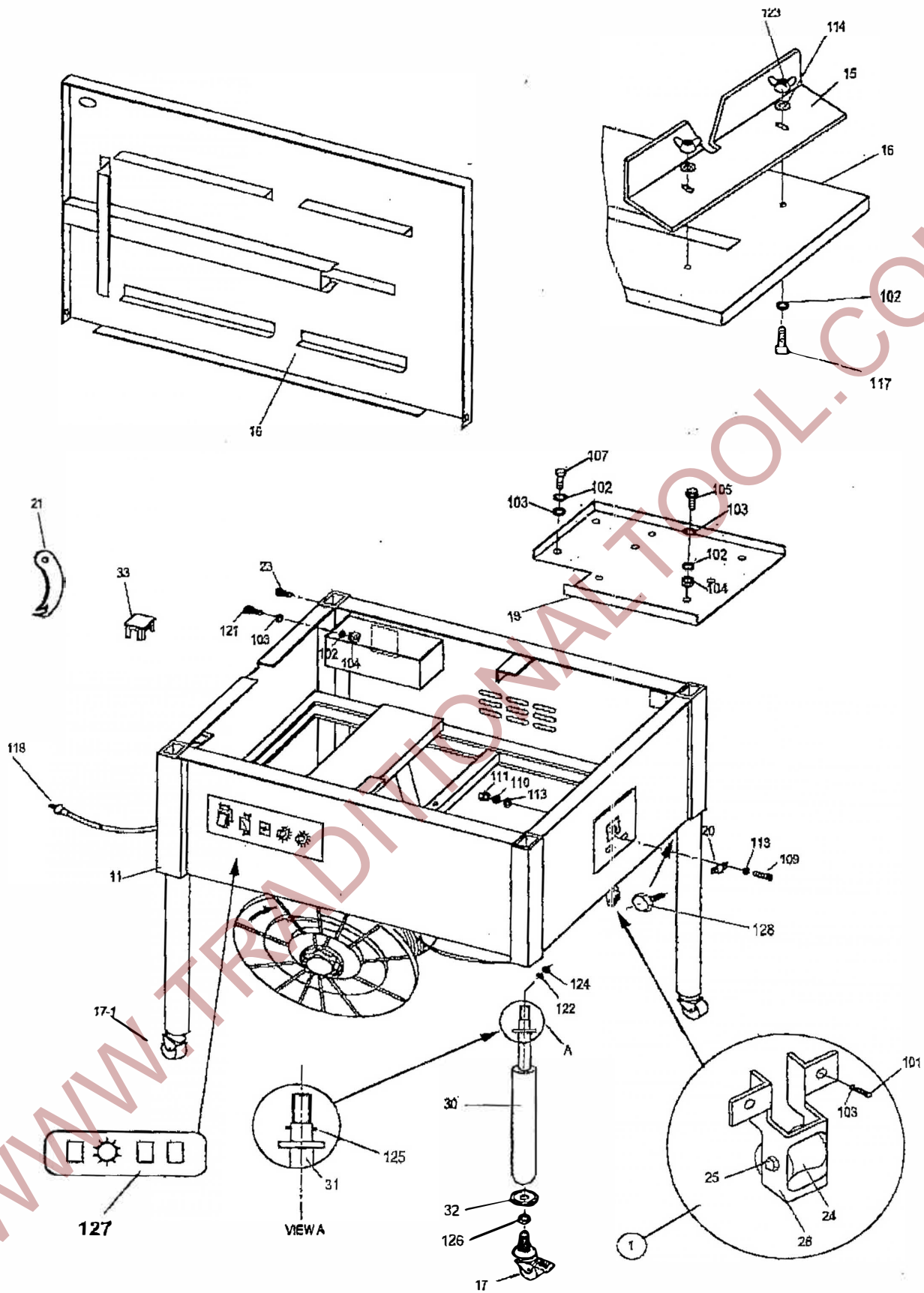


FIGURE 6-2. CABINET COMPONENTS (P-625)

PARTS LIST, FIGURE 7-1. DISPENSER ASSEMBLY (P-725 MACHINE)

<u>KEY</u>	<u>QTY.</u>	<u>PART NO.</u>	<u>DESCRIPTION</u>
1	1	4-07000	PLASTIC FLANGE UNIT
11	1	4-07000-110	Plastic flange
12	1	4-07000-120	Plastic flange
13	1	4-07000-130	Reel center claw
14	1	4-07000-140	Reel shaft
15	1	4-07000-150	Y-type washer
16	1	4-07000-160	Plain washer, M40x3
17	1	4-07000-170	Pin
19	1	4-07000-190	Reel nut handwheel
20	1	4-07000-200	Left bracket
21	1	4-07000-210	Right bracket
100	1	212AS25	Ring, R-25
101	4	200A06012	Socket head cap screw, M6x12
102	6	200A06020	Socket head cap screw, M6x20
103	1	212CR8	Spring pin-R

PARTS LIST, FIGURE 8-1. DISPENSER BRAKE ARM (P-725 MACHINE)

<u>KEY</u>	<u>QTY.</u>	<u>PART NO.</u>	<u>DESCRIPTION</u>
1	1	408000	BRAKE UNIT
11	1	408000-110	Pin
12	1	408000-120	Plastic roller
13	1	408000-130	Roller frame
14	1	408000-140	Brake rubber
15	1	408000-150	Angle plate
16	1	408000-160	Brake fixed pin
17	1	408000-170	Brake arm
102	4	202B06	Lock washer M6
104	6	201A06	Hex nut, M6
105	2	200C06020	Hex bolt, M6x20
106	1	2201213047	Brake spring, 1.2x13x47
107	2	200AE04	Ring, E-4
108	3	212AS10	Ring, S-10
109	2	200A06020	Socket head cap screw, M6x20
110	2	202A0613	Plain washer, M6x13

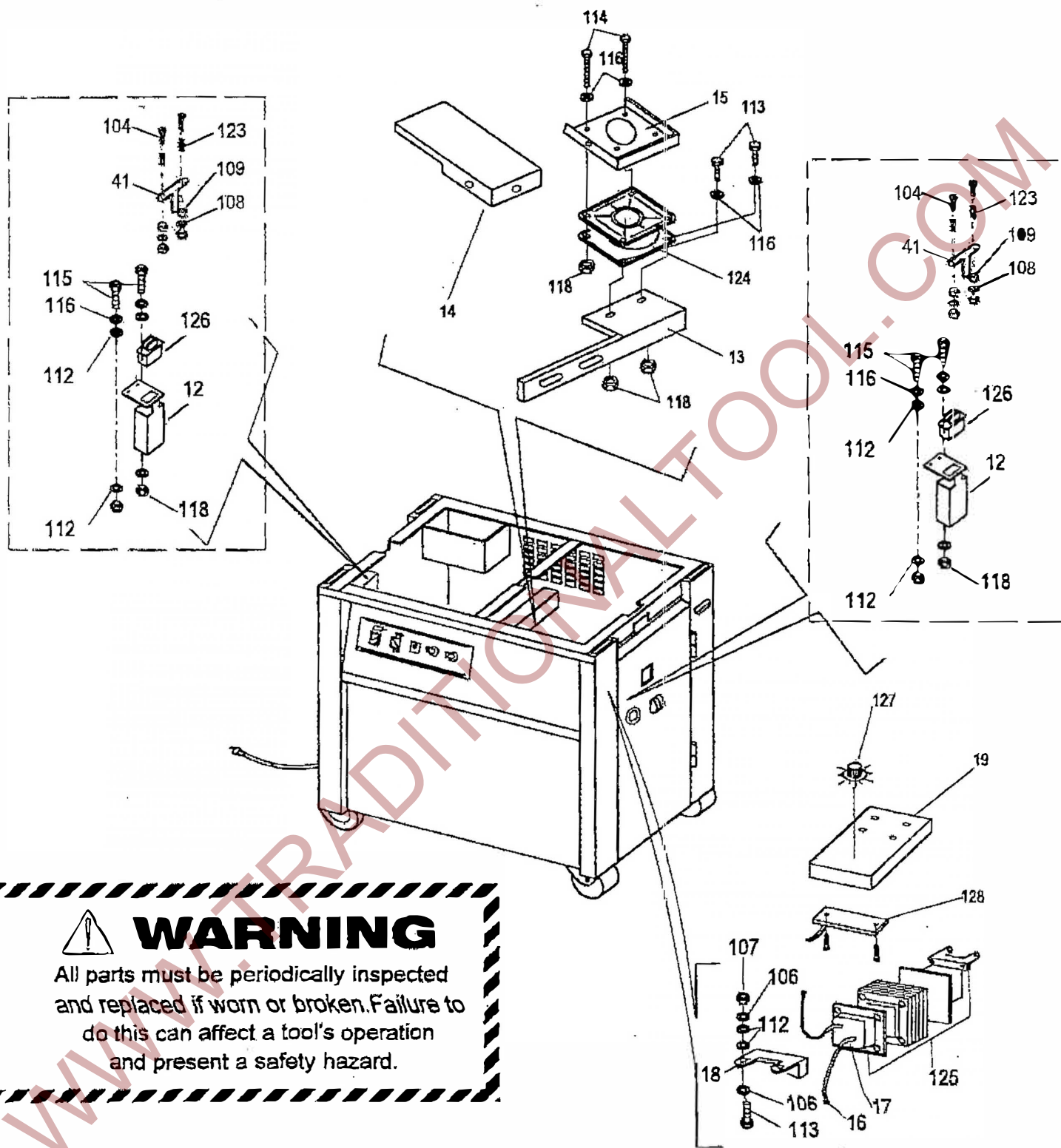
PARTS LIST, FIGURE 8-2. DISPENSER ASSEMBLY (P-625 MACHINE)

KEY	QTY.	PART NO.	DESCRIPTION
1	1	4-08200	REEL BRAKE UNIT
11	1	4-08000-110	Pin
12	1	4-08000-120	Plastic roller
13	1	4-08000-130	Roller frame
14	1	4-08200-140	Brake belt
16	1	4-08200-160	Belt pin
17	1	4-08200-170	Reel brake arm
18	1	4-08200-180	Belt holder plate
19	1	4-08200-190	Reel shaft
20 ✓	1	4-07000-110	Plastic flange
21 ✓	1	4-07000-120	Plastic flange
22	1	4-07000-130	Reel center claw
23	1	4-07000-150	Y-type washer
24	1	4-07000-160	Plain washer, M40x3
25	1	4-07000-170	Pin
27 ✓	1	4-07000-190	Reel nut handwheel
28	1	4-08200-280	Brake belt tightener
29	1	4-08200-290	Spring pillar
30	1	4-08200-300	Reel brake pulley
31	1	4-08200-310	Plastic cap
32	1	4-08200-320	Reel brake bracket
33	1	4-08200-330	Brake shaft
37	1	4-08500-370	Brake arm fixed shaft
100	1	202B06	Lock washer, M6
101	6	200A06020	Socket head cap screw, M6x20
102	1	212AS25	Ring, S-25
103	2	200E04020	Phillips head machine screw, M4x20
104	2	201A04	Hex nut, M4
105	14	202A0409	Plain washer, M4x9
106	1	212AE04	Ring, E-4
107	2	212AS10	Ring, S-10
108	2	210A6003	Ball bearing, 6003ZZ
109	1	212AS15	Ring, S-15
110	3	202A0613	Plain washer, M6x13
111	1	212CR8	Spring pin, R-8
10 113 ✓	6	200E04016	Phillips head machine screw, M4x16
114	3	202B08	Lock washer, M8
115	1	202A0816	Plain washer, M8x16
116	3	201A08	Hex nut, M8
117	1	200A08030	Socket head cap screw, M8x30
118	1	200A06016	Socket head cap screw, M6x16
119	5	201A06	Hex nut, M6
120	8	202B04	Lock washer, M4
121	4	200C06025	Hex bolt, M6x25
122	8	202A061620	Plain washer, 6x16x2
123	2	212AR18	Ring, R-18
125	1	2201213047	Brake spring, 1.2x13x47

PARTS LIST, FIGURE 9-1. ELECTRICAL COMPONENTS (P-725 MACHINE)

KEY	QTY.	PART NO.	DESCRIPTION
1	1	4-09010	SMOKE FAN UNIT
2	1	4-09020	INSTANT HEATING TRANSFORMER UNIT
12	3	4-09041-120	Switch holder
13	1	4-09010-132	Fan bracket
14	1	4-09010-143	Protective cover
15	1	4-09010-151	Protective cover bracket
16	2	4-09020-160	Instant heating cable
17	2	4-09020-170	Insulating tube
18	1	4-09020-180	Transformer foot
19	1	4-09000-190	Heating transformer cover
41	3	4-09041-121	Stop leaf
104	6	200F05030	Flat head set screw, M5x30
106	10	202B04	Lock washer, M4
107	10	201A04	Hex nut, M4
108	6	202B05	Lock washer, M5
109	12	201A05	Hex nut, M5
112	10	202A0410	Plain washer, M4x10
113	2	200E04010	Phillips head machine screw, M4x10
114	2	200E04050	Phillips head machine screw, M4x50
115	6	200E04015	Phillips head machine screw, M4x15
116	12	202B04	Lock washer, M4
118	18	201B04	Hex nut, M4
123	6	2210808022	Spring, 0.8x8x22
124	1	116AD024	Smoke fan, 24VDC
125	1	103A1101	Instant heating transformer, 110V-1V
126	3	104Y1638	Cut safety switch, XK-1099
127	1	153K0619R	Knob
128	1	PC-FP-24D03-11060	Heating PC board assembly, FP-24D03 110V/60Hz

For Control Panel and Control Box components, see Pages 50-51



WARNING
 All parts must be periodically inspected and replaced if worn or broken. Failure to do this can affect a tool's operation and present a safety hazard.

FIGURE 9-1. ELECTRICAL COMPONENTS (P-725)

PARTS LIST, FIGURE 9-2. ELECTRICAL COMPONENTS (P-625 MACHINE)

KEY	QTY.	PART NO.	DESCRIPTION
1	1	4-09010	SMOKE FAN UNIT
2	1	4-09020	INSTANT HEATING TRANSFORMER UNIT
12	3	4-09041-120	Switch holder
13	1	4-09010-132	Fan bracket
14	1	4-09010-143	Protective cover
15	1	4-09010-151	Protective cover bracket
16	2	4-09020-160	Instant heating cable
17	2	4-09020-170	Insulating tube
18	1	4-09020-180	Transformer foot
19	1	4-09000-190	Heating transformer cover
41	3	4-09041-121	Stop leaf
104	6	200F05030	Flat head set screw, M5x30
106	10	202B04	Lock washer, M4
107	10	201A04	Hex nut, M4
108	6	202B05	Lock washer, M5
109	6	201A04	Hex nut, M5
112	10	202A0410	Plain washer, M4x10
113	2	200E04010	Phillips head machine screw, M4x10
114	2	200E04050	Phillips head machine screw, M4x50
115	6	200E04015	Phillips head machine screw, M4x15
116	8	202B04	Lock washer, M4
118	18	201B04	Hex nut, M4
123	6	2201808022	Spring, 0.8x8x22
124	1	116AD024	Smoke fan, 24VDC
125	1	103A1101	Instant heating transformer, 110V-1V
126	3	104Y1638	Cut safety switch, XK-1099
127	1	153K0619R	Knob
128	1	PC-FP-24D03-11060	Heating PC board assembly, FP-24D03 110V/60Hz

For Control Panel and Control Box components, see Pages 50-51

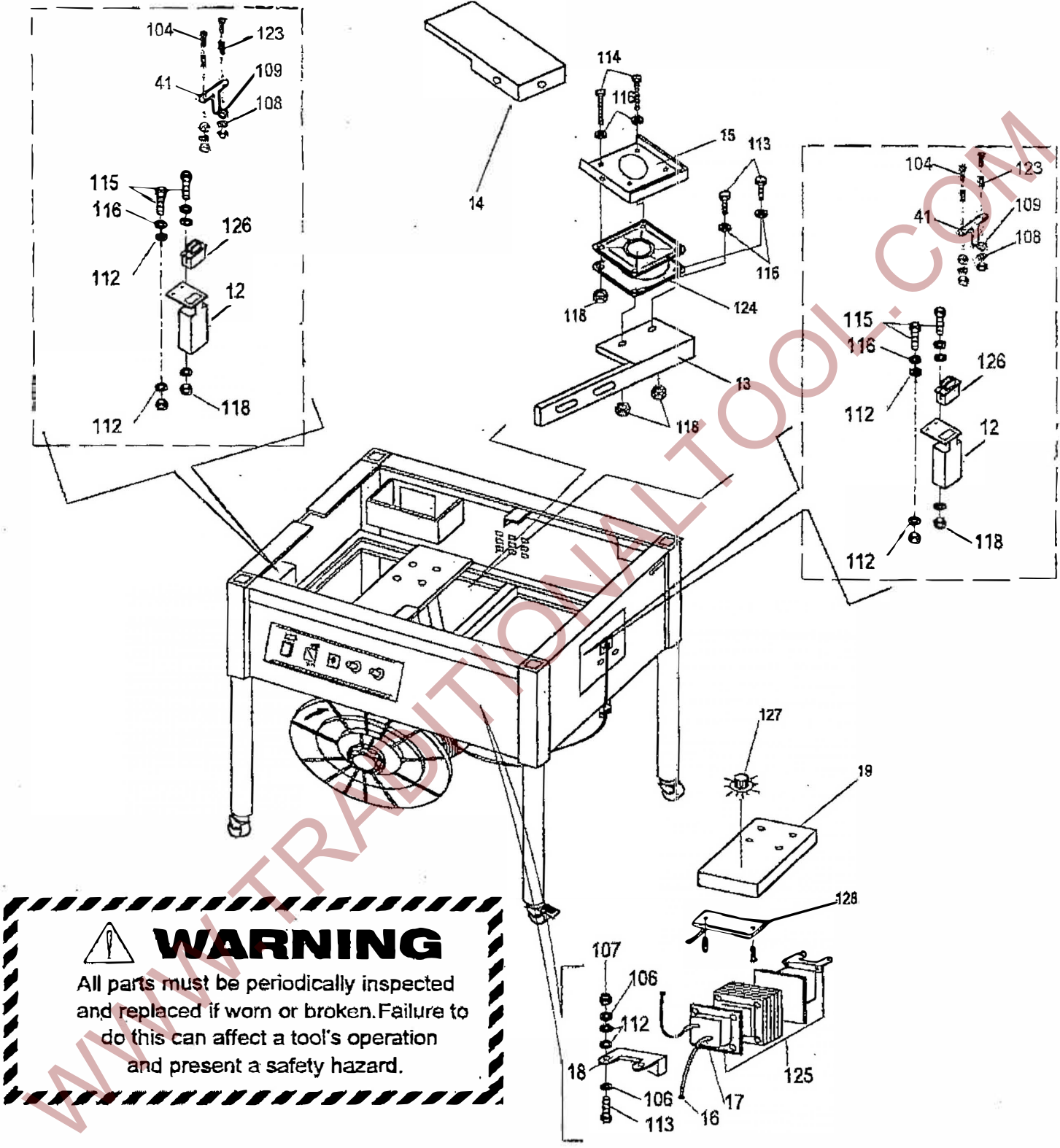


FIGURE 9-2. ELECTRICAL COMPONENTS (P-625)

PARTS LIST, FIGURE 10. CONTROL PANEL AND CONTROL BOX

KEY	QTY.	PART NO.	DESCRIPTION
11	1	4-10100-110	Control box (P-625, P-625E Only)
		4-10200-111	Control box (P-725, P-725E Only)
12	1	4-10100-120	Control box cover (P-625, P-625E Only)
		4-10200-121	Control box cover (P-725, P-725E Only)
17	1	PC-FP-30A01	Control PC board assembly, FP-30A01 (Standard Machine)
	1	PC-FP-30C01	Control PC board assembly, FP-30C01 (Opt. Electric Tension)
19	1	153K0617B	Knob (Standard Machine)
	3	153K0617B	Knob (Opt. Electric Tension)
102	1	103B1122035	Transformer, 110-22V., 35VA
104	1	115C1501	Circuit Protector, ZE800, 15A (FU-1)
105	1	115C0301	Circuit Protector, ZE800, 3A (FU-2)
106	1	115C0201	Circuit Protector, ZE800, 2A (FU-3) (Standard Machine)
		115C0301	Circuit Protector, ZE800, 3A (FU-3) (Opt. Electric Tension)
107	1	108BK500 ✓	Potentiometer, 500K (Standard Machine)
	2	108BK500	Potentiometer, 500K (Opt. Electric Tension)
108	4	200E03006	Phillips head machine screw, M3x10
109	4	153AJ002	Speed clamp
112	4	200F03010	Flat head screw, M3x10 (P-725, P-725E Only)
113	8	202B03	Lockwasher, M3 (P-725, P-725E Only)
114	8	201A03	Hex nut, M3 (P-725, P-725E Only)
115	1	PC-FP-30S	Control PC Board assembly, FP-30S (P-725, P-725E Only)
116	1	108BK010 ✓	Potentiometer, NR-10KB(24D), (Opt. Electric Tension)
119	1	104A001B	Power switch
121	1	104F001	Reset switch
123	1	104F002	Feed Switch
124	1	254A0010	Label (Standard Machine)
		254A0011	Label (Opt. Electric Tension)

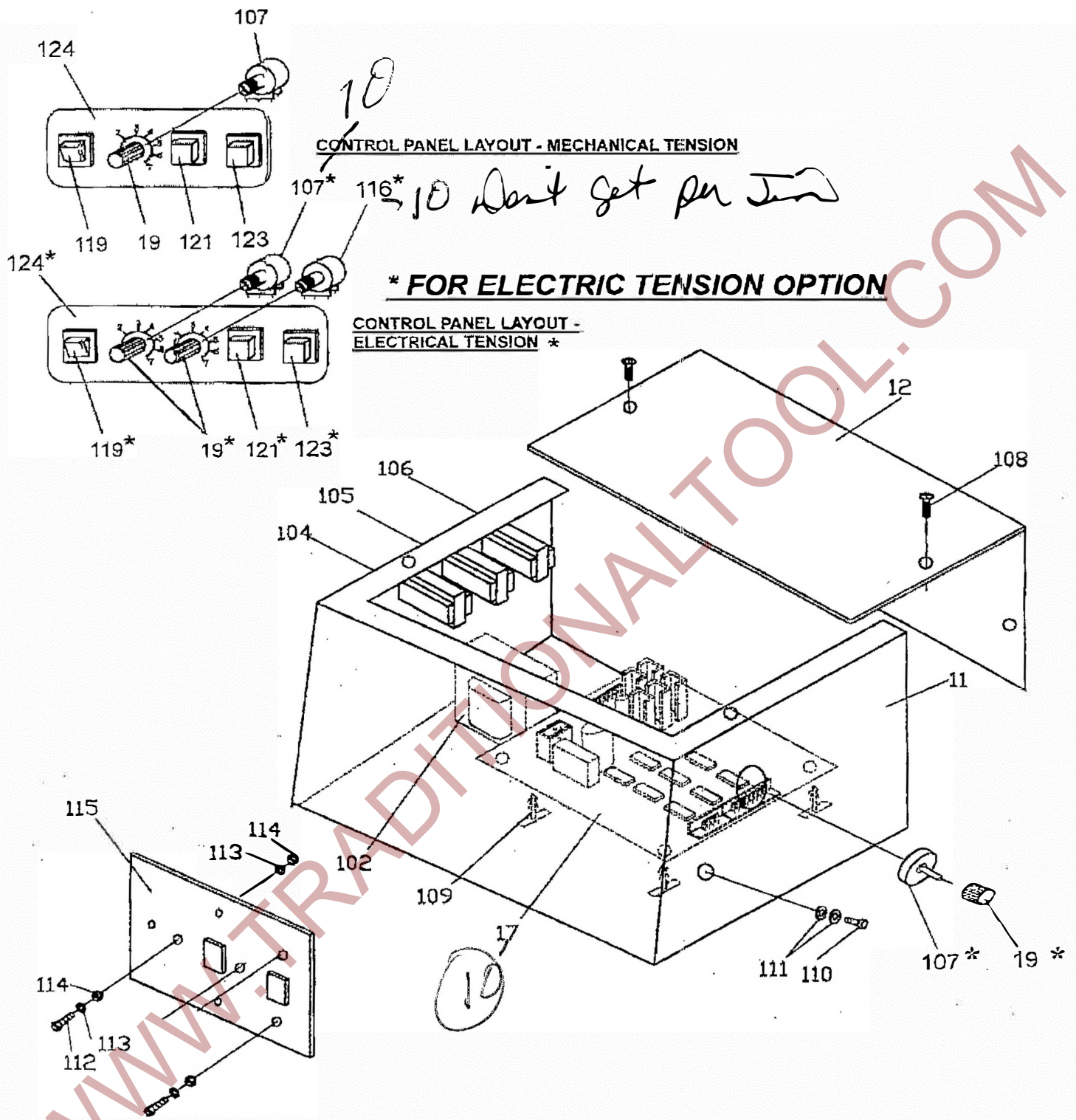


FIGURE 10. CONTROL PANEL AND CONTROL BOX